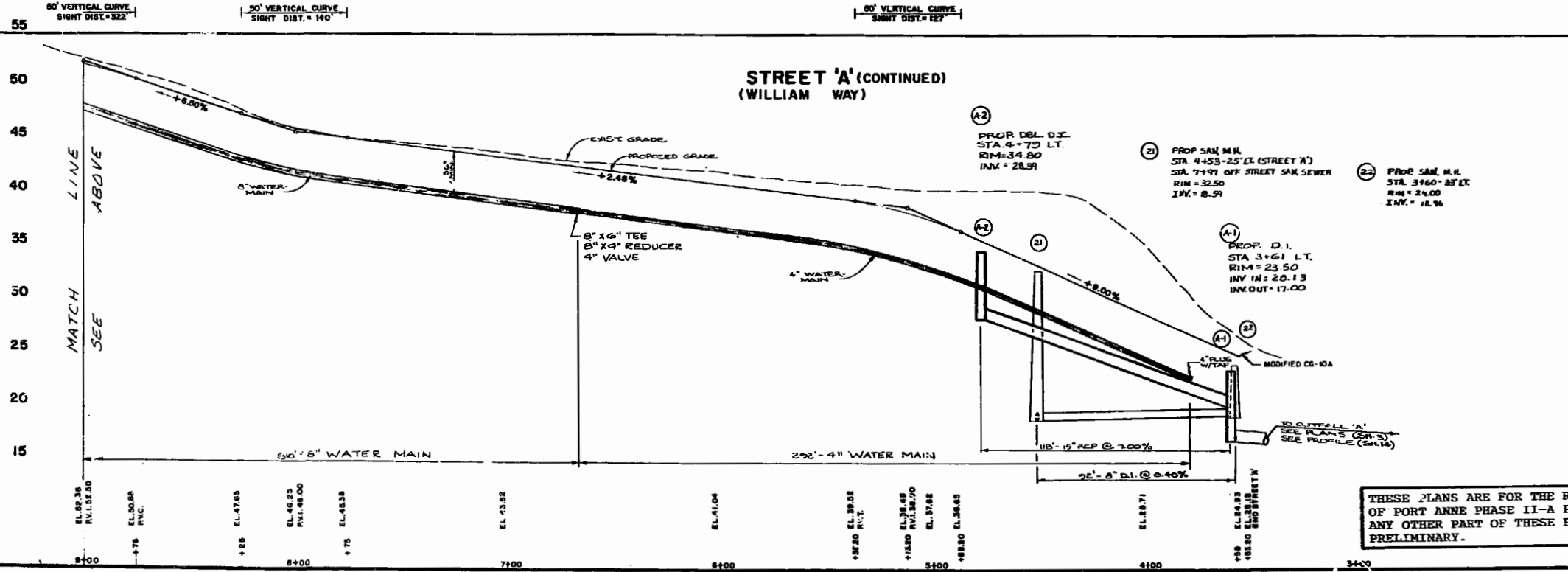
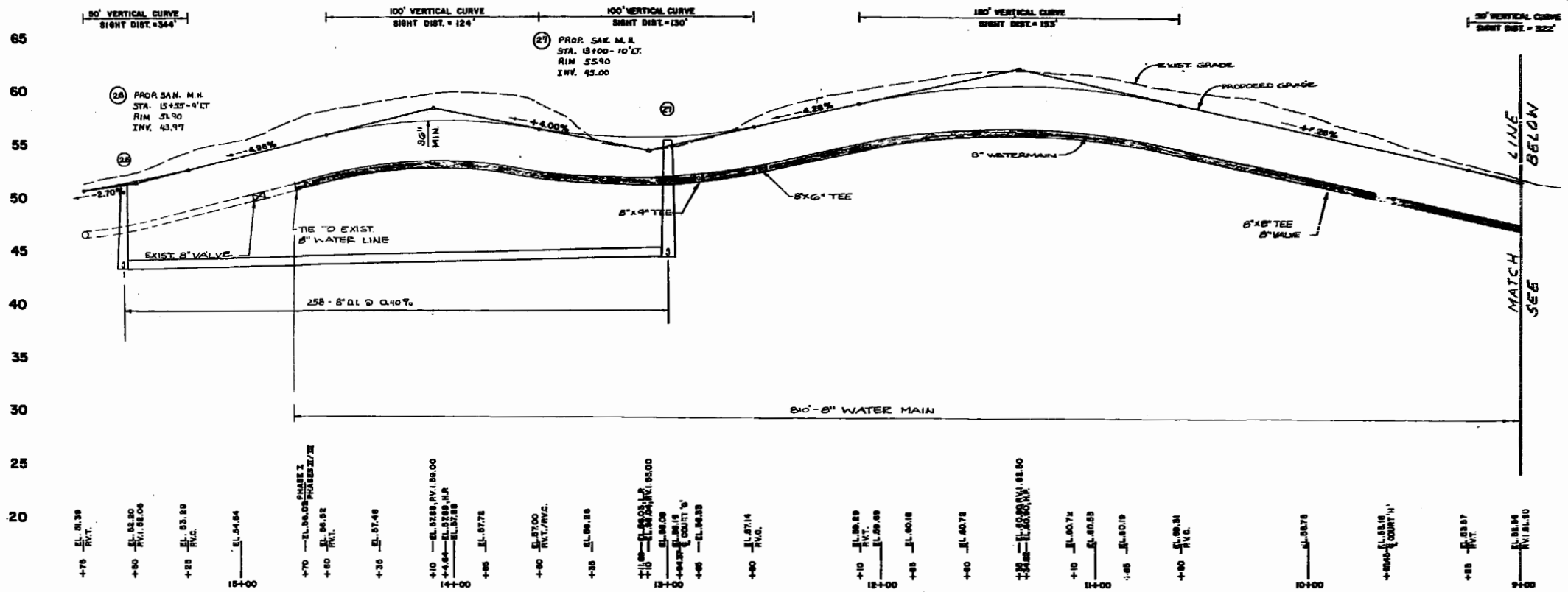


STREET 'A'
(WILLIAM WAY)



Talbot & Associates, Ltd.
 ARCHITECTS, ENGINEERS, SURVEYORS, PLANNERS
 10000 W. 11th St., Suite 100, Denver, CO 80231
 PHONE: 303.751.1000 FAX: 303.751.1001

STREET PROFILES
FOR
PORT ANNE
PHASES TWO & THREE
 WILLIAMSBURG, VIRGINIA

Designed WCB/CPL
 Drawn E.A.S./E.A.W.
 Checked ABS
 Scale VERT. 1"=6'
 HORIZ. 1"=20'
 Date 9/29/88
 File No. E-84018
 Project No. 84018A
 Sheet No.

THESE PLANS ARE FOR THE RECORDATION OF PORT ANNE PHASE II-A PLATS ONLY, ANY OTHER PART OF THESE PLANS ARE PRELIMINARY.

