

MATCH LINE SEE SHEET NO. 9

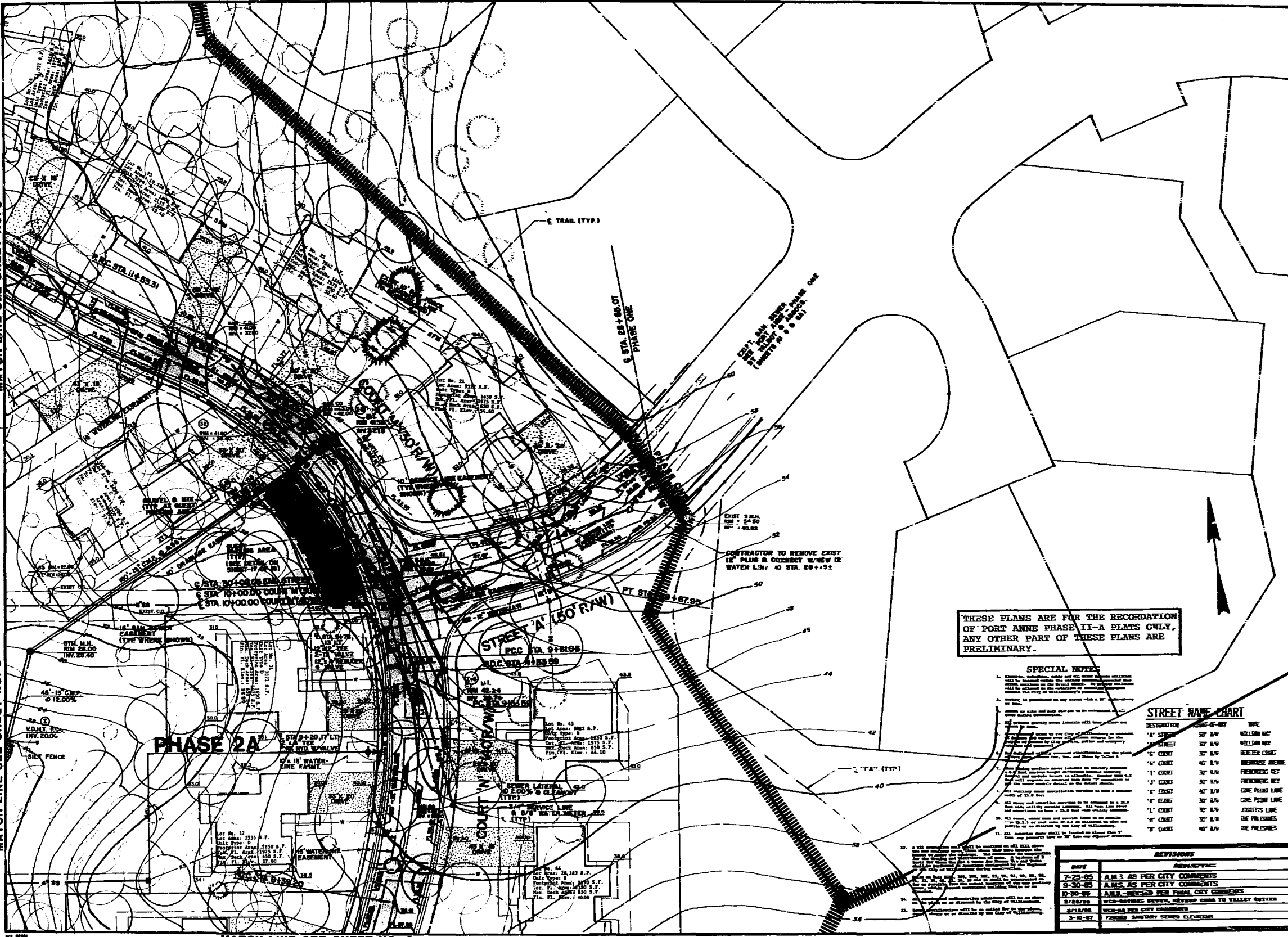


SITE DEVELOPMENT PLAN  
**PORT ANNE**  
PHASES TWO & THREE  
WILLIAMSBURG, VIRGINIA

MATCH LINE SEE SHEET NO. 9

MATCH LINE SEE SHEET NO. 8

174 42281



THESE PLANS ARE FOR THE RECORDATION OF PORT ANNE PHASE II-A PLATS ONLY, ANY OTHER PART OF THESE PLANS ARE PRELIMINARY.

**SPECIAL NOTES**

1. All utility lines shown on these plans are to be installed in accordance with the applicable codes and standards of the City of Williamsburg, Virginia.
2. All utility lines shown on these plans are to be installed in accordance with the applicable codes and standards of the City of Williamsburg, Virginia.
3. All utility lines shown on these plans are to be installed in accordance with the applicable codes and standards of the City of Williamsburg, Virginia.
4. All utility lines shown on these plans are to be installed in accordance with the applicable codes and standards of the City of Williamsburg, Virginia.
5. All utility lines shown on these plans are to be installed in accordance with the applicable codes and standards of the City of Williamsburg, Virginia.
6. All utility lines shown on these plans are to be installed in accordance with the applicable codes and standards of the City of Williamsburg, Virginia.
7. All utility lines shown on these plans are to be installed in accordance with the applicable codes and standards of the City of Williamsburg, Virginia.
8. All utility lines shown on these plans are to be installed in accordance with the applicable codes and standards of the City of Williamsburg, Virginia.
9. All utility lines shown on these plans are to be installed in accordance with the applicable codes and standards of the City of Williamsburg, Virginia.
10. All utility lines shown on these plans are to be installed in accordance with the applicable codes and standards of the City of Williamsburg, Virginia.

**STREET NAME CHART**

REMARKS	WIDTH OF R/W	LINE
'A' STREET	50' R/W	YELLOW W/
'B' STREET	30' R/W	YELLOW W/
'C' STREET	30' R/W	RED/BLACK
'D' STREET	40' R/W	RED/BLACK
'E' STREET	30' R/W	RED/BLACK
'F' STREET	30' R/W	RED/BLACK
'G' STREET	40' R/W	RED/BLACK
'H' STREET	30' R/W	RED/BLACK
'I' STREET	30' R/W	RED/BLACK
'J' STREET	30' R/W	RED/BLACK
'K' STREET	30' R/W	RED/BLACK
'L' STREET	30' R/W	RED/BLACK
'M' STREET	30' R/W	RED/BLACK
'N' STREET	30' R/W	RED/BLACK
'O' STREET	40' R/W	RED/BLACK

**REVISIONS**

DATE	DESCRIPTION
7-25-85	A.M.S. AS PER CITY COMMENTS
9-30-85	A.M.S. AS PER CITY COMMENTS
10-30-85	A.M.S. - REVISED PER FINAL CITY COMMENTS
2/22/86	REVISED PER CITY COMMENTS TO VALLEY CUTTER
2/18/86	REVISED PER CITY COMMENTS
3-10-87	FORCED SANITARY SEWER ELEVATIONS

Designed: WCR/CFL  
 Draw: T/A  
 Checked: ABS  
 Scale: 1"=20'  
 Date: 8/20/85  
 File No: E-5401D  
 Project No: 84619A  
 Sheet No: **7**  
 of 18 Sheets