

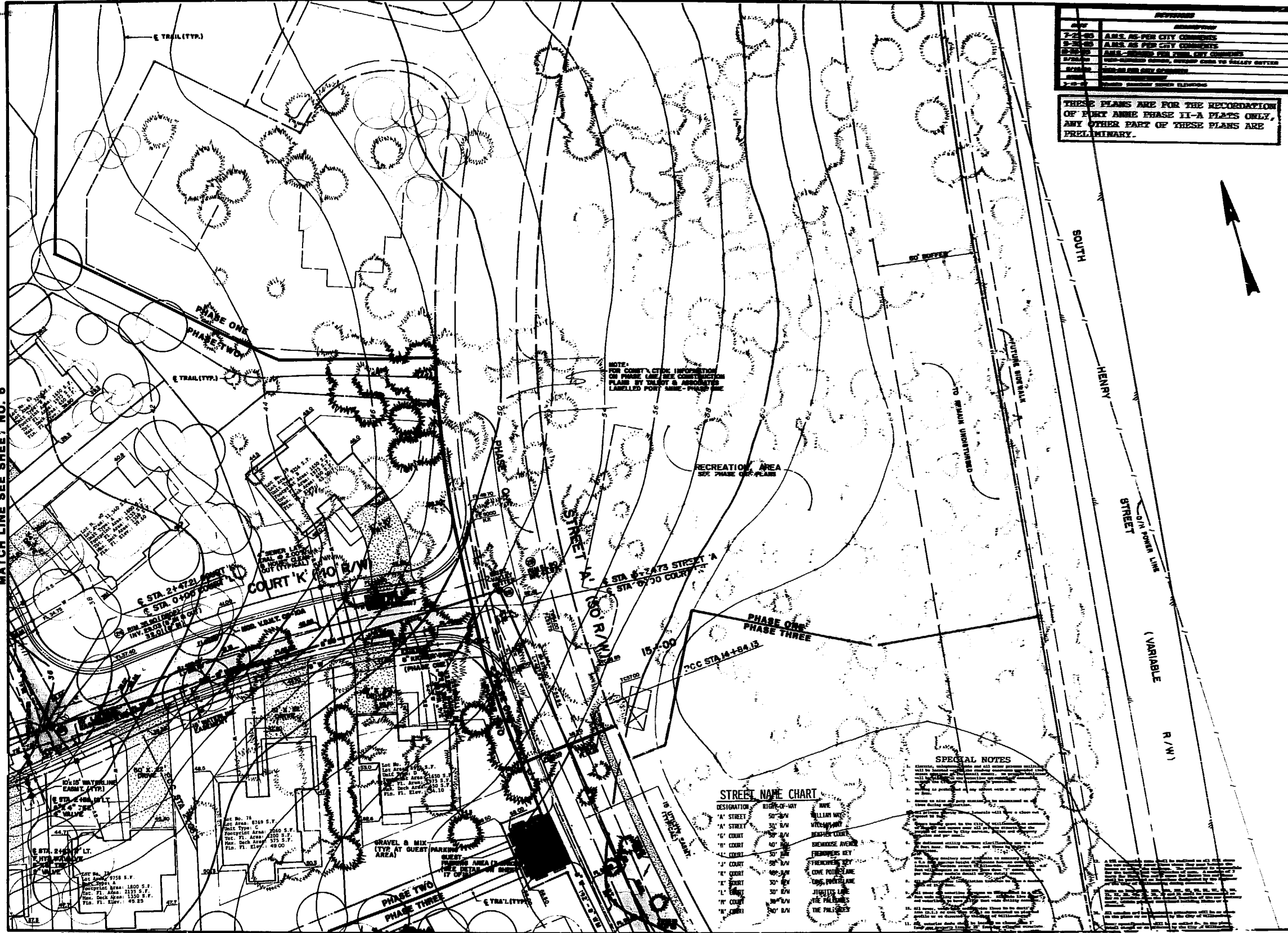
REV	DESCRIPTION
1-2-80	AMS AS PER CITY COMMENTS
2-2-80	AMS AS PER CITY COMMENTS
3-2-80	AMS AS PER CITY COMMENTS
4-2-80	AMS AS PER CITY COMMENTS
5-2-80	AMS AS PER CITY COMMENTS
6-2-80	AMS AS PER CITY COMMENTS
7-2-80	AMS AS PER CITY COMMENTS
8-2-80	AMS AS PER CITY COMMENTS
9-2-80	AMS AS PER CITY COMMENTS
10-2-80	AMS AS PER CITY COMMENTS
11-2-80	AMS AS PER CITY COMMENTS
12-2-80	AMS AS PER CITY COMMENTS

THESE PLANS ARE FOR THE RECODIFICATION OF PART ANNE PHASE II-A PLATS ONLY, ANY OTHER PART OF THESE PLANS ARE PRELIMINARY.

T&A
Talbot & Associates Ltd.
 ARCHITECTS, ENGINEERS, PLANNERS
 1100 W. BROAD ST., SUITE 1000
 RICHMOND, VIRGINIA 23297
 TEL: (804) 781-1100

SITE DEVELOPMENT PLAN
PORT ANNE
 PHASES TWO & THREE
 WILLIAMSBURG, VIRGINIA

Designed: WCB/CPL
 Drawn: T/A
 Checked: ADS
 Scale: 1"=20'
 Date: 8/30/85
 File No: E-84019
 Project No: 84019A
 Sheet No:



NOTE: FOR COURT, CITE INFORMATION ON PHASE ONE SEE CONSTRUCTION PLANS BY TALBOT & ASSOCIATES LABELLED PORT ANNE - PHASE ONE

RECREATION AREA
 SEE PHASE ONE PLANS

SPECIAL NOTES

STREET NAME CHART

DESIGNATION	RIGHT-OF-WAY	NAME
"A" STREET	50' R/W	WILLIAM WALKER
"B" STREET	50' R/W	WILSON WAY
"C" COURT	50' R/W	WILSON COURT
"D" COURT	40' R/W	WILSON COURT
"E" COURT	50' R/W	WILSON COURT
"F" COURT	50' R/W	WILSON COURT
"G" COURT	50' R/W	WILSON COURT
"H" COURT	50' R/W	WILSON COURT
"I" COURT	50' R/W	WILSON COURT
"J" COURT	50' R/W	WILSON COURT
"K" COURT	50' R/W	WILSON COURT
"L" COURT	50' R/W	WILSON COURT
"M" COURT	50' R/W	WILSON COURT
"N" COURT	50' R/W	WILSON COURT
"O" COURT	50' R/W	WILSON COURT
"P" COURT	50' R/W	WILSON COURT
"Q" COURT	50' R/W	WILSON COURT
"R" COURT	50' R/W	WILSON COURT
"S" COURT	50' R/W	WILSON COURT
"T" COURT	50' R/W	WILSON COURT
"U" COURT	50' R/W	WILSON COURT
"V" COURT	50' R/W	WILSON COURT
"W" COURT	50' R/W	WILSON COURT
"X" COURT	50' R/W	WILSON COURT
"Y" COURT	50' R/W	WILSON COURT
"Z" COURT	50' R/W	WILSON COURT

MATCH LINE SEE SHEET NO. 6

MATCH LINE SEE SHEET NO. 5

MATCH LINE SEE SHEET NO. 2

