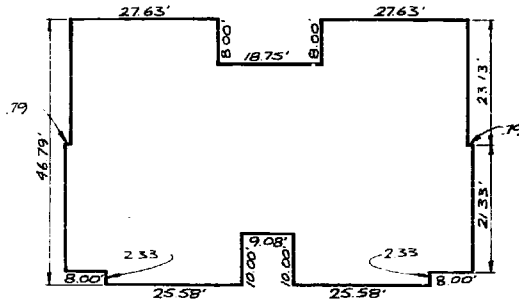
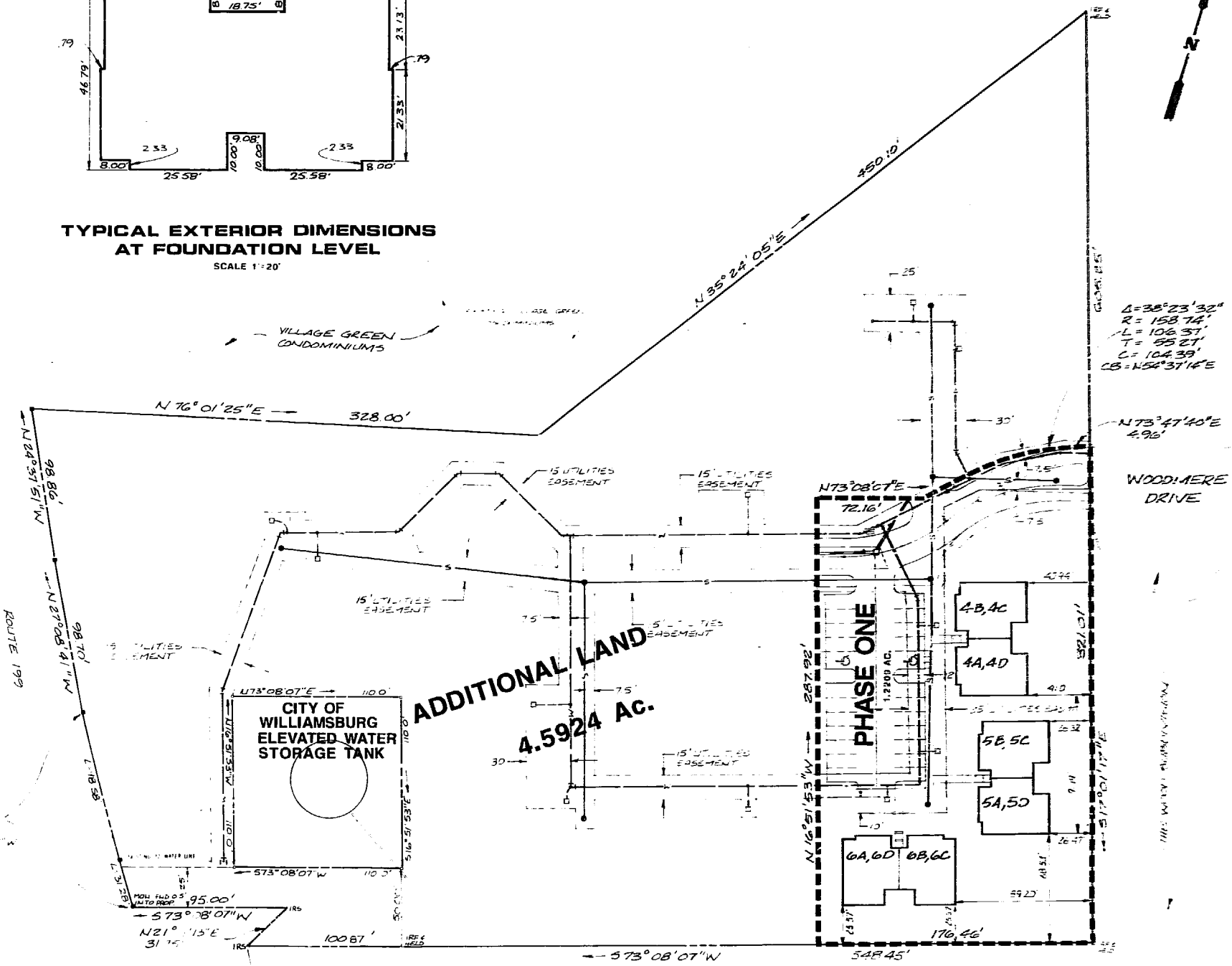


LOCATION MAP
SCALE: 1"=2000'



TYPICAL EXTERIOR DIMENSIONS
AT FOUNDATION LEVEL
SCALE 1"=20'



NOTE: ALL UTILITY EASEMENTS SHOWN
HEREON ARE HEREBY DEDICATED
TO THE CITY OF WILLIAMSBURG

--- DENOTES PHASE BOUNDARY

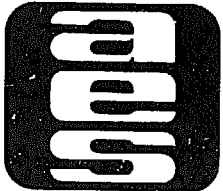
Δ = 64' 04" 19"
R = 1750' 63"
L = 129' 86"
T = 68' 46"
C = 23' 84"
CB = 135° 22' 11" W

WE HEREBY CERTIFY THAT WE HAVE SURVEYED THE SUBMITTED LAND AND DO FURTHER
CERTIFY THAT THE LOCATION AND DIMENSIONS OF THE SUBMITTED LAND
ARE AS SHOWN AND COMPARE WITH THE PROVISIONS OF SECTION 151-74.2
OF THE CITY OF WILLIAMSBURG AS AMENDED. ALL ERRORS HAVE BEEN SUBSTANTIALLY
CORRECTED.

AS A PROFESSIONAL CORPORATION

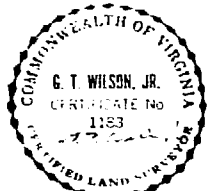
G.T. WILSON, JR. C.L.S.

9:53 AM
Recorded 11/13 in September, 1987
D.B. No. 81 pages 1
John Swand Clerk



AES, a professional corporation
1761 Jamestown Road, Williamsburg, Va. 23185
804-253-0040
Engineering, Planning, Surveying

CONDOMINIUM PLAT
THE WOODLANDS A CONDOMINIUM
PHASE I
OWNER/DEVELOPER : S.W.N. ASSOCIATES
CITY OF WILLIAMSBURG VIRGINIA



No.	DATE	REVISION / COMMENT / NOTE	BY
1	9/22/87	REVISED BOUNDARY	SW
2	9/27/87	ADDED UTILITY EASEMENTS AND ENTRY EASEMENT	SW
3	10/27/86	ADDED FOUNDATION DIMENSIONS & ETC.	SW

Designed GAM	Drawn GSS
Scale 1"=50'	Date 9/25/87
Project No 6119	
Drawing No EXHIBIT B	