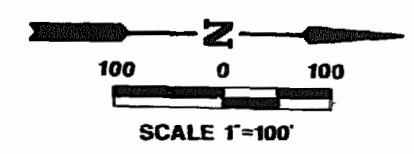


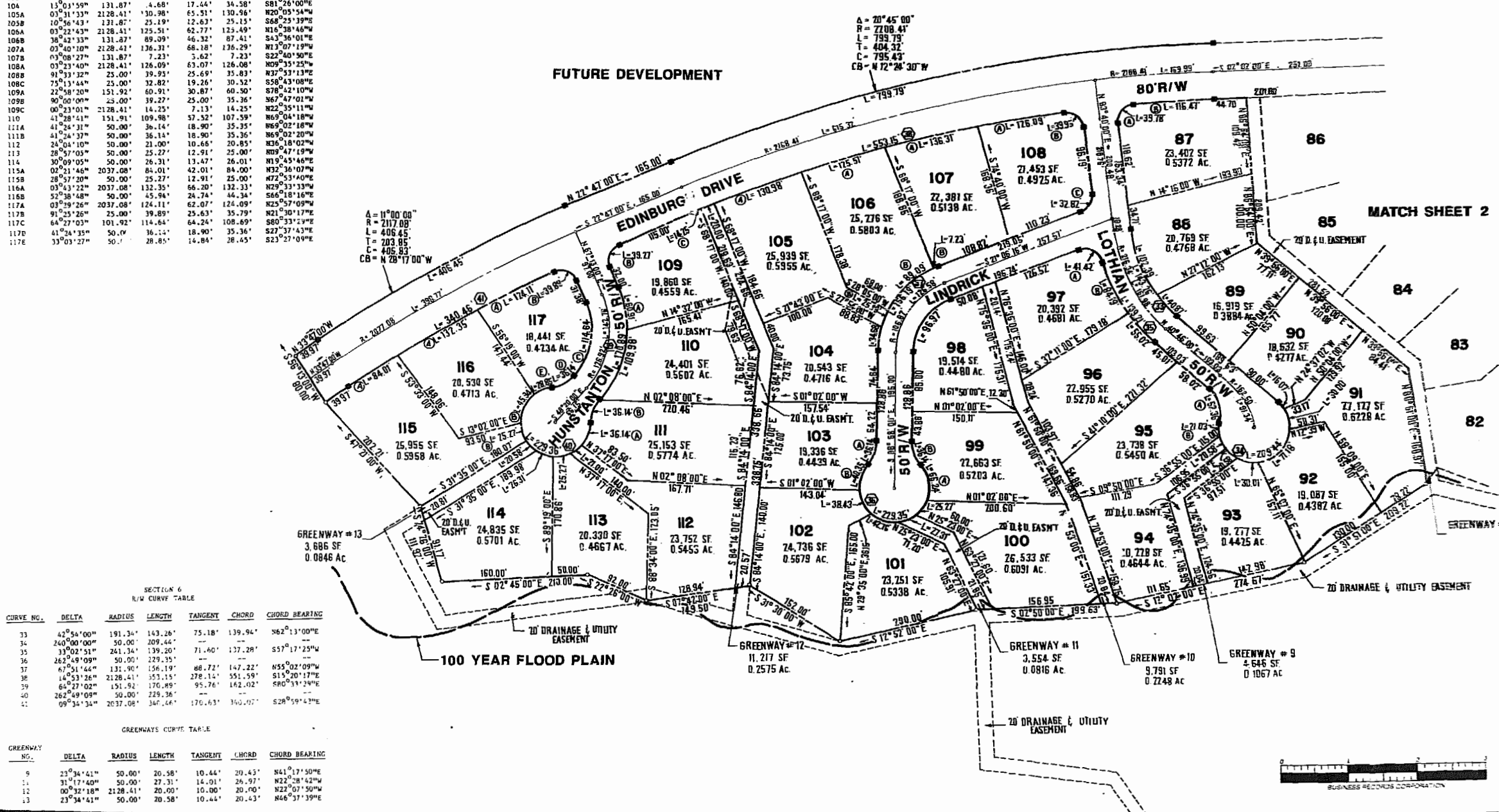
LOT CURVE TABLE

LOT NO.	DELTA	RADIUS	LENGTH	TANGENT	CHORD	CHORD BEARING
87A	91°09'57"	25.00'	39.78'	25.51'	35.71'	N50°45'08"W
87B	03°48'07"	2128.41'	116.47'	58.25'	116.46'	N03°36'03"W
88	30°39'42"	191.34'	102.39'	52.46'	101.18'	S68°20'09"W
89	12°14'18"	191.34'	40.87'	20.51'	40.79'	S46°53'09"W
90	18°24'55"	50.00'	16.07'	8.11'	16.00'	S49°53'13"W
91	36°22'36"	50.00'	30.00'	15.47'	29.55'	S76°02'13"W
92	81°53'48"	50.00'	71.18'	43.13'	65.32'	N45°39'35"W
93	34°23'11"	50.00'	30.01'	15.47'	29.56'	N12°18'54"E
94	23°34'41"	50.00'	20.58'	10.44'	20.43'	N64°52'32"E
95A	60°30'00"	50.00'	52.36'	28.87'	50.00'	N70°46'06"E
95B	2°06'08"	50.00'	21.03'	10.67'	20.88'	N88°42'58"E
96	13°03'40"	241.34'	55.02'	27.63'	54.90'	N47°17'50"E
97A	59°55'07"	25.00'	41.42'	27.24'	36.84'	N26°21'17"E
97B	19°59'11"	241.34'	84.19'	42.52'	83.76'	N63°49'15"E
98	67°51'42"	61.87'	96.97'	55.08'	91.40'	N55°02'08"W
99A	63°17'43"	50.00'	55.24'	30.82'	52.47'	S81°16'17"W
99B	41°24'35"	50.00'	36.14'	18.90'	35.36'	S70°19'43"W
100	28°57'20"	50.00'	25.27'	12.91'	25.00'	S52°36'12"W
101	48°59'36"	50.00'	52.76'	22.78'	41.46'	N17°39'56"E
102	44°02'28"	50.00'	38.43'	20.22'	37.49'	N64°10'56"E
103A	41°24'35"	50.00'	36.14'	18.90'	35.36'	S68°13'43"E
103B	46°54'27"	50.00'	40.35'	21.35'	39.27'	S70°40'39"E
104	13°01'59"	131.87'	4.68'	17.44'	34.58'	S81°26'00"E
105A	03°31'33"	2128.41'	130.98'	65.51'	130.96'	N20°03'54"W
105B	10°56'43"	131.87'	25.19'	12.63'	25.13'	S68°29'39"E
106A	03°22'43"	2128.41'	125.51'	62.77'	123.49'	N16°28'46"W
107A	03°40'10"	2128.41'	136.31'	68.18'	136.29'	N13°07'19"W
107B	03°08'27"	131.87'	7.23'	3.62'	7.23'	S22°40'50"E
108A	03°23'40"	2128.41'	126.09'	63.07'	126.08'	N09°35'25"W
108B	91°33'32"	25.00'	39.93'	25.69'	35.83'	N37°53'13"E
108C	75°13'44"	25.00'	32.82'	19.26'	30.32'	S58°43'08"E
109A	22°58'20"	151.92'	60.91'	30.87'	60.50'	S78°02'10"W
109B	38°42'33"	131.87'	89.39'	46.32'	87.41'	S43°36'01"E
109C	00°23'01"	2128.41'	14.25'	7.13'	14.25'	N22°35'11"W
110	41°28'41"	151.91'	109.98'	57.52'	107.59'	N69°04'18"W
111A	41°24'31"	50.00'	36.14'	18.90'	35.35'	N69°02'18"W
111B	41°24'37"	50.00'	36.14'	18.90'	35.36'	N69°02'20"W
112	24°04'10"	50.00'	21.00'	10.66'	20.85'	N36°18'02"W
113	28°57'03"	50.00'	25.27'	12.91'	25.00'	N09°47'19"W
114	30°09'05"	50.00'	26.31'	13.47'	26.01'	N19°45'46"E
115A	02°21'46"	2037.08'	84.01'	42.01'	84.00'	N32°36'07"W
115B	28°57'20"	50.00'	25.27'	12.91'	25.00'	N72°53'40"E
116A	03°43'22"	2037.08'	132.35'	66.20'	132.33'	N29°33'33"W
116B	52°38'48"	50.00'	45.94'	24.74'	44.34'	S66°18'16"E
117A	03°29'28"	2037.08'	124.11'	62.07'	124.09'	N25°57'09"W
117B	91°25'26"	25.00'	39.89'	25.63'	35.79'	N21°30'17"E
117C	64°27'03"	101.92'	114.64'	64.24'	108.69'	S80°33'39"E
117D	41°24'35"	50.00'	36.14'	18.90'	35.36'	S27°37'43"E
117E	33°03'27"	50.00'	28.85'	14.84'	28.45'	S23°27'09"E



FUTURE DEVELOPMENT

FUTURE DEVELOPMENT

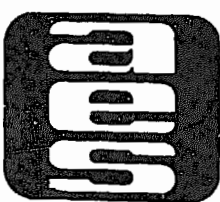


SECTION 6
R/W CURVE TABLE

CURVE NO.	DELTA	RADIUS	LENGTH	TANGENT	CHORD	CHORD BEARING
33	43°54'00"	191.34'	143.26'	75.18'	139.94'	S62°13'00"E
34	26°00'00"	50.00'	209.44'	---	---	---
35	33°02'51"	241.34'	139.20'	71.40'	137.28'	S57°17'25"W
36	26°29'09"	50.00'	229.35'	---	---	---
37	67°51'46"	131.90'	156.19'	88.72'	147.22'	N55°02'09"W
38	14°53'26"	2128.41'	55.15'	278.14'	551.59'	S15°20'17"E
39	67°27'02"	151.92'	170.49'	95.76'	162.02'	S80°33'39"E
40	26°49'09"	50.00'	229.36'	---	---	---
41	09°34'34"	2037.08'	347.44'	170.63'	340.07'	S28°59'42"E

GREENWAYS CURVE TABLE

GREENWAY NO.	DELTA	RADIUS	LENGTH	TANGENT	CHORD	CHORD BEARING
9	23°34'41"	50.00'	20.58'	10.44'	20.43'	N41°17'50"E
11	31°17'40"	50.00'	27.31'	14.01'	26.97'	N22°28'42"W
12	00°32'18"	2128.41'	20.00'	10.00'	20.00'	N22°07'50"W
13	23°34'41"	50.00'	20.58'	10.44'	20.43'	N46°57'39"E



AES, a professional corporation
 1781 Jamestown Road, Williamsburg, Va. 23185
 804-253-0040
 Engineering, Planning, Surveying

PLAT OF
FORD'S COLONY
 @ **WILLIAMSBURG**
 SECTION VI
 LOT 87 TO LOT 117

BERKELEY DISTRICT JAMES CITY COUNTY VIRGINIA



NO.	DATE	REVISION / COMMENT / NOTE	BY

Designed LCA/AES	Drawn SB
Scale 1"=100'	Date JULY 30, 1987
Project No. 5652	
Drawing No. 3 of 3	