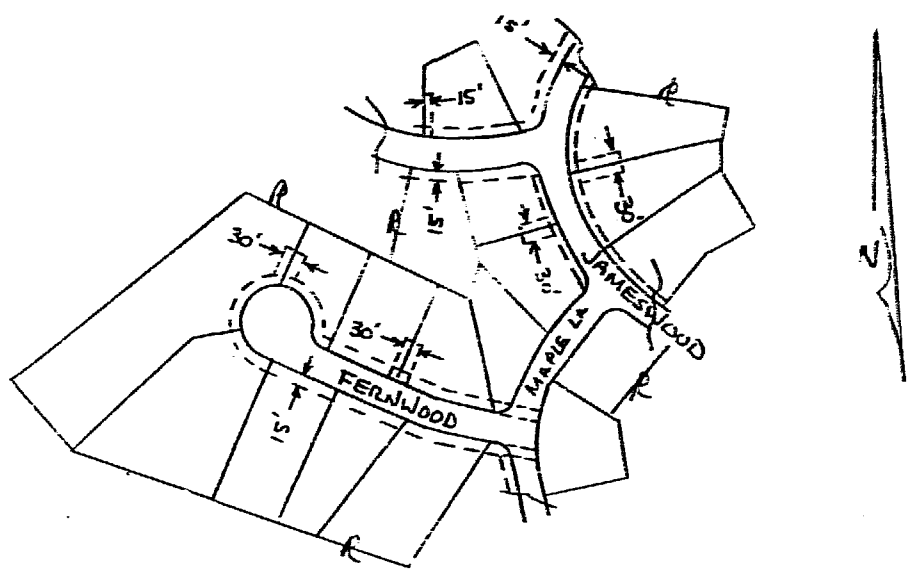



SHELLBANK WOODS SUBDIVISION SECTION 5 BULL/BROOKS PARTNERSHIP



DWJEL WB

Legend


 Location Of Boundary Lines Of Right-Of-Way ^{DESIGNATED}
 ON 15' WIDTH

9:14 am.
 Recorded 12th day of May 1987
 in
 B. B. No. 363 page 263
 Helene S. Ward Clerk
 By Dawn R. Murty, Dep. Clerk



VIRGINIA POWER
UG

Plat To Accompany Right-Of-Way Agreement

Virginia Electric and Power Company

District	WILLIAMSBURG		
District-Township-Borough	County-City	State	
BERKELEY	JAMES CITY	VA	
Office	Plat Number		
WILLIAMSBURG	R/W 28-87-0072		
Estimate Number	Grd Number		
28-45330-00	M1635		
Date	By		
4-20-87	R. KANE		

