

LOT CURVE TABLE

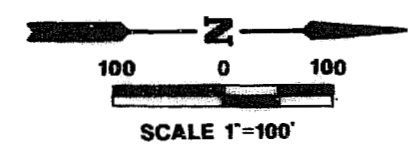
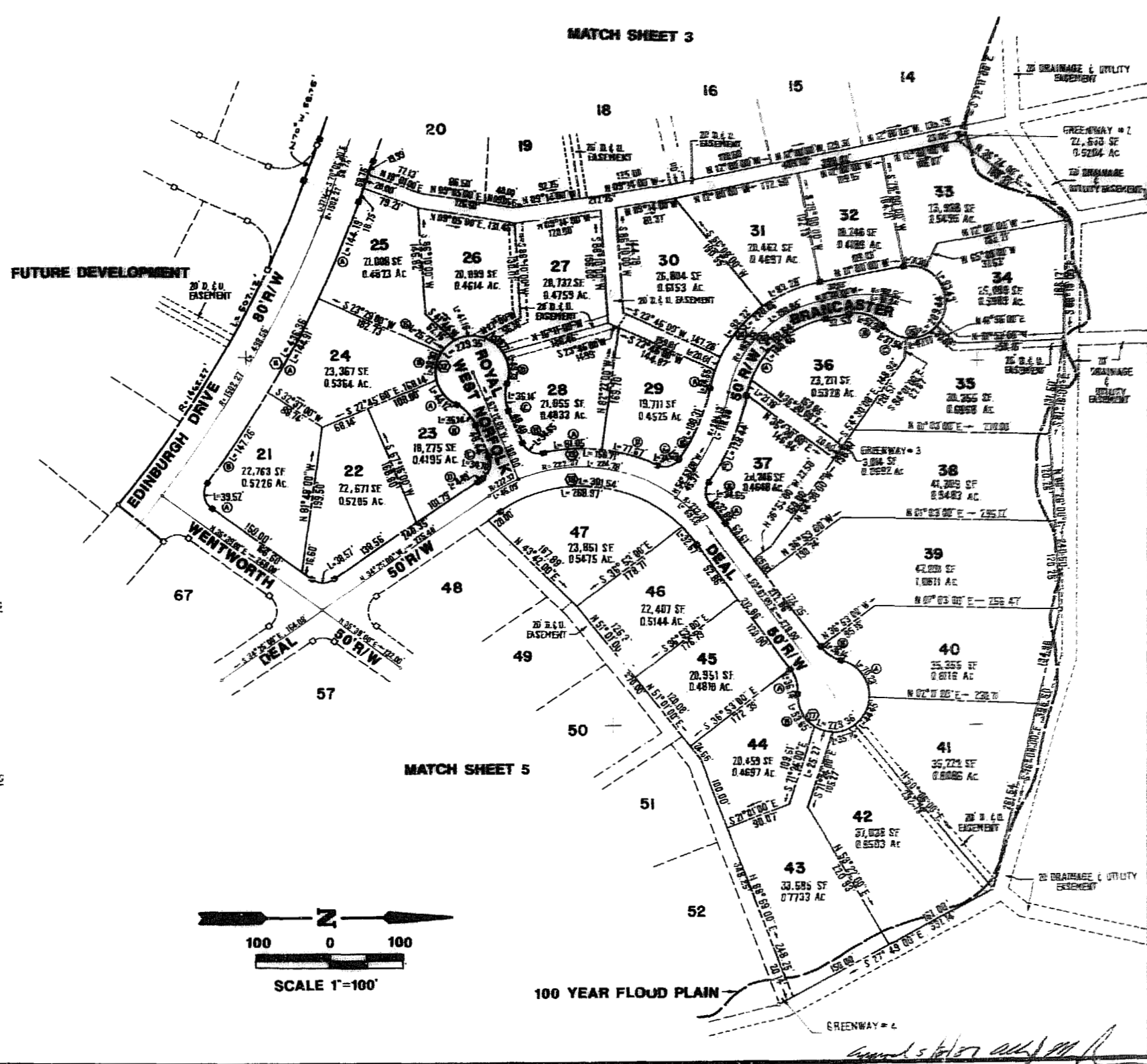
LOT NO.	DELTA	RADIUS	LENGTH	TANGENT	CHORD	CHORD BEARING
21A	9° 33' 39"	25.00'	39.52'	25.25'	35.53'	S80° 55' 50" W
21B	0° 28' 15"	1542.27'	147.26'	73.69'	147.20'	N56° 31' 28" W
22	7° 04' 00"	25.00'	30.57'	17.53'	28.70'	S00° 37' 00" W
23A	5° 33' 20"	50.00'	44.12'	23.61'	42.70'	N51° 04' 05" E
23B	4° 24' 35"	50.00'	36.14'	18.90'	35.36'	N46° 29' 43" E
23C	7° 31' 59"	25.00'	34.70'	20.80'	31.98'	S73° 06' 29" E
23D	0° 02' 20"	267.37'	4.49'	2.24'	4.40'	S33° 53' 42" E
24A	0° 23' 01"	1542.27'	144.91'	72.51'	144.86'	N61° 57' 06" W
24B	4° 02' 18"	50.00'	39.30'	20.73'	38.30'	S91° 08' 06" W
25A	0° 21' 26"	1542.27'	144.19'	72.15'	144.14'	N67° 19' 18" W
25B	2° 57' 20"	50.00'	25.27'	12.91'	25.00'	S44° 08' 17" W
26	47° 10' 00"	50.00'	41.16'	21.83'	40.01'	S06° 06' 37" E
27	40° 59' 34"	50.00'	35.77'	18.69'	35.77'	S02° 50' 10" E
28A	1° 46' 20"	247.37'	81.05'	40.89'	80.69'	S27° 29' 20" W
28B	7° 25' 20"	25.00'	34.65'	20.76'	31.95'	S87° 34' 17" W
28C	41° 24' 35"	50.00'	36.14'	18.90'	35.36'	S83° 33' 16" W
28D	50° 06' 36"	50.00'	43.73'	23.37'	42.35'	S74° 12' 24" W
29A	07° 38' 07"	188.35'	24.55'	12.29'	24.53'	S66° 24' 46" E
29B	2° 03' 34"	269.13'	108.31'	54.90'	107.59'	S15° 10' 14" E
29C	7° 25' 20"	25.00'	34.65'	20.76'	31.95'	S15° 32' 40" W
29D	17° 59' 20"	247.37'	77.67'	39.16'	77.35'	S23° 50' 00" E
30	28° 03' 07"	188.35'	92.22'	47.05'	91.30'	S50° 21' 34" E
31	25° 20' 01"	188.35'	87.28'	42.33'	82.60'	S23° 50' 00" E
32	35° 52' 00"	50.00'	31.30'	16.18'	30.79'	S06° 56' 00" W
33	107° 04' 00"	50.00'	93.43'	67.65'	80.42'	S78° 24' 20" W
34	54° 03' 09"	50.00'	47.17'	25.50'	45.44'	N21° 02' 30" W
36A	58° 10' 14"	138.35'	140.46'	76.96'	134.51'	N40° 05' 07" W
36B	60° 00' 16"	50.00'	52.36'	28.87'	50.00'	N19° 00' 00" E
36C	43° 01' 00"	50.00'	37.54'	19.70'	36.66'	N27° 29' 30" E
37A	07° 25' 20"	247.37'	32.05'	16.05'	32.02'	S49° 24' 12" W
37B	7° 25' 20"	25.00'	34.65'	20.76'	31.95'	S85° 24' 20" W
37C	23° 03' 33"	319.13'	128.44'	65.10'	127.57'	N66° 24' 17" W
40A	80° 28' 35"	50.00'	70.23'	42.31'	64.60'	S51° 55' 43" W
40B	41° 24' 35"	50.00'	36.14'	18.90'	35.36'	S32° 24' 43" W
41	50° 56' 00"	50.00'	44.45'	23.81'	43.00'	N62° 21' 00" W
42	40° 58' 30"	50.00'	35.76'	18.68'	35.00'	N16° 23' 45" W
43	28° 37' 18"	50.00'	25.27'	12.91'	25.00'	N18° 34' 09" E
44A	41° 24' 35"	50.00'	36.14'	18.90'	35.36'	N73° 49' 17" E
44B	61° 28' 47"	50.00'	53.65'	29.74'	51.11'	N63° 47' 11" E
46	09° 27' 16"	197.37'	32.57'	16.32'	32.53'	N48° 23' 21" E
47	78° 04' 44"	197.37'	268.97'	160.06'	248.63'	N04° 37' 22" E

R/W CURVE TABLE

CURVE NO.	DELTA	RADIUS	LENGTH	TANGENT	CHORD	CHORD BEARING
11	16° 12' 39"	1542.27'	436.36'	219.65'	434.91'	S61° 53' 40" E
12	262° 49' 09"	50.00'	229.35'	---	---	---
13	3° 45' 39"	247.37'	158.71'	82.20'	156.01'	N06° 09' 30" E
14	6° 56' 31"	188.35'	220.06'	124.53'	207.76'	N44° 28' 16" W
15	24° 00' 00"	50.00'	209.64'	---	---	---
16	66° 56' 31"	138.35'	161.64'	91.47'	152.60'	S44° 28' 16" E
17	262° 49' 10"	50.00'	229.36'	---	---	---
18	87° 32' 00"	197.37'	301.54'	189.05'	273.06'	S09° 21' 00" W

GREENWAYS CURVE TABLE

GREENWAY NO.	DELTA	RADIUS	LENGTH	TANGENT	CHORD	CHORD BEARING
2	06° 05' 17"	188.35'	20.01'	10.02'	20.00'	S67° 25' 46" E
3	08° 46' 17"	138.35'	21.18'	10.61'	21.16'	N73° 33' 22" W



**AES**, a professional corporation  
 1761 Jamestown Road, Williamsburg, Va. 23185  
 804-253-0040  
 Engineering, Planning, Surveying

PLAT OF  
**FORD'S COLONY**  
 @ **WILLIAMSBURG**  
 SECTION VI  
 LOT 21 TO LOT 47

BERKELEY DISTRICT      JAMES CITY COUNTY      VIRGINIA



DATE	REVISION / COMMENT / NOTE	BY

Checked by:   
 LCA/AES:   
 Scale: 1"=100'      Date: 2/28/2007  
 Project No:   
 5652  
 Drawing No:   
**4 of 5**