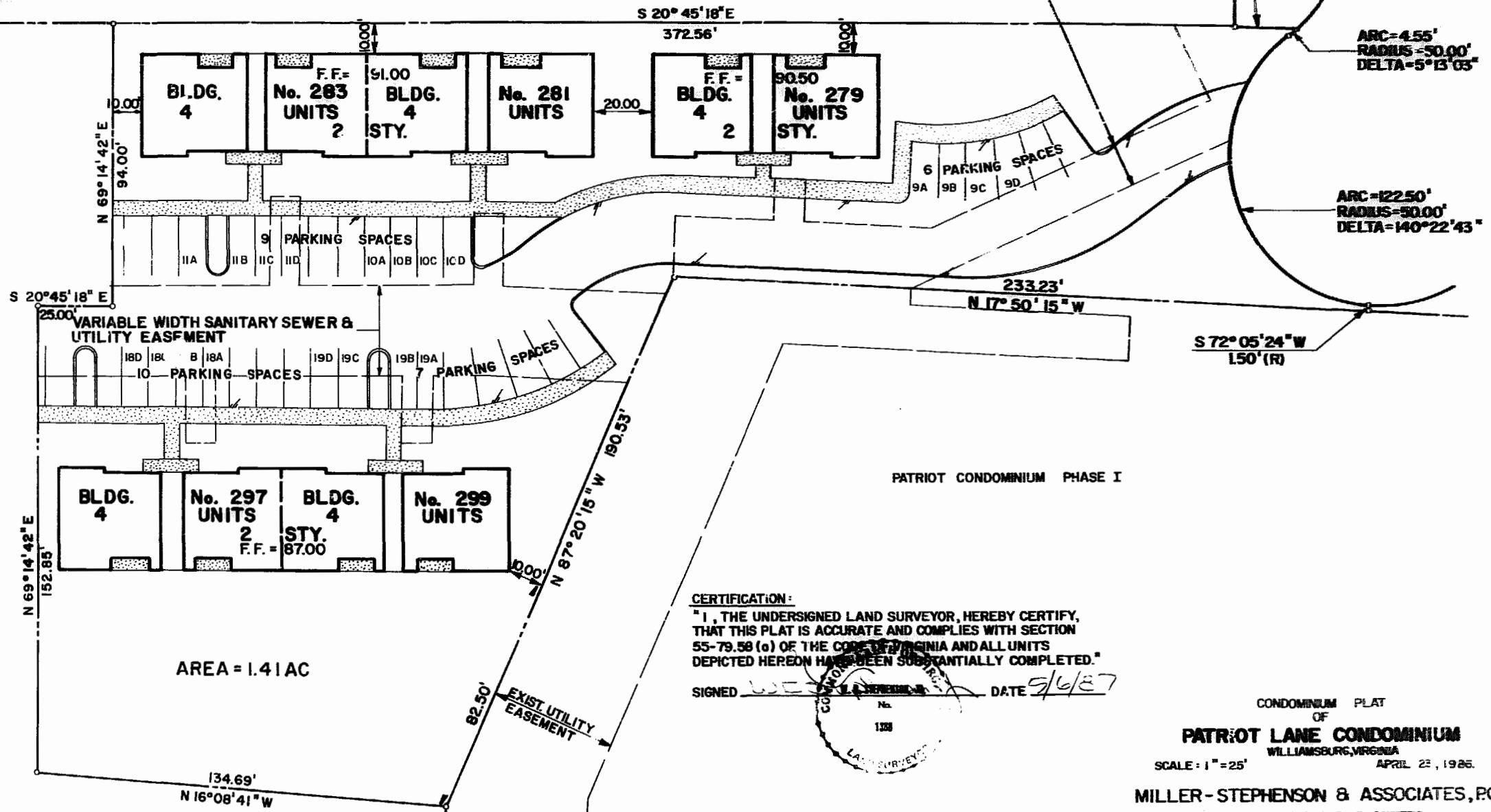


WARBURTON & MAHONE

VARIABLE WIDTH SANITARY SEWER AND UTILITY EASEMENT

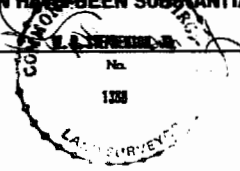
PATRIOT DRIVE
(50' R/W)



CONVERTIBLE & WITHDRAWABLE LAND
EXPANDABLE & WITHDRAWABLE LAND
SEE SHEET 2 OF 5

CERTIFICATION:
"I, THE UNDERSIGNED LAND SURVEYOR, HEREBY CERTIFY, THAT THIS PLAT IS ACCURATE AND COMPLIES WITH SECTION 55-79.58 (a) OF THE CODE OF VIRGINIA AND ALL UNITS DEPICTED HEREON HAVE BEEN SUBSTANTIALLY COMPLETED."

SIGNED W. E. STEPHENSON DATE 5/6/87



1:09 p.m.
Recorded 7/14/87 at Dept. 1887
P. B. No. 79
W. E. Stephenson

CONDOMINIUM PLAT
OF
PATRIOT LANE CONDOMINIUM
WILLIAMSBURG, VIRGINIA
SCALE: 1" = 25' APRIL 22, 1986.
MILLER-STEPHENSON & ASSOCIATES, P.C.
ENGINEERS SURVEYORS PLANNERS
204 GRAYSON ROAD VIRGINIA BEACH VA. 23462
(804-490-9264)

