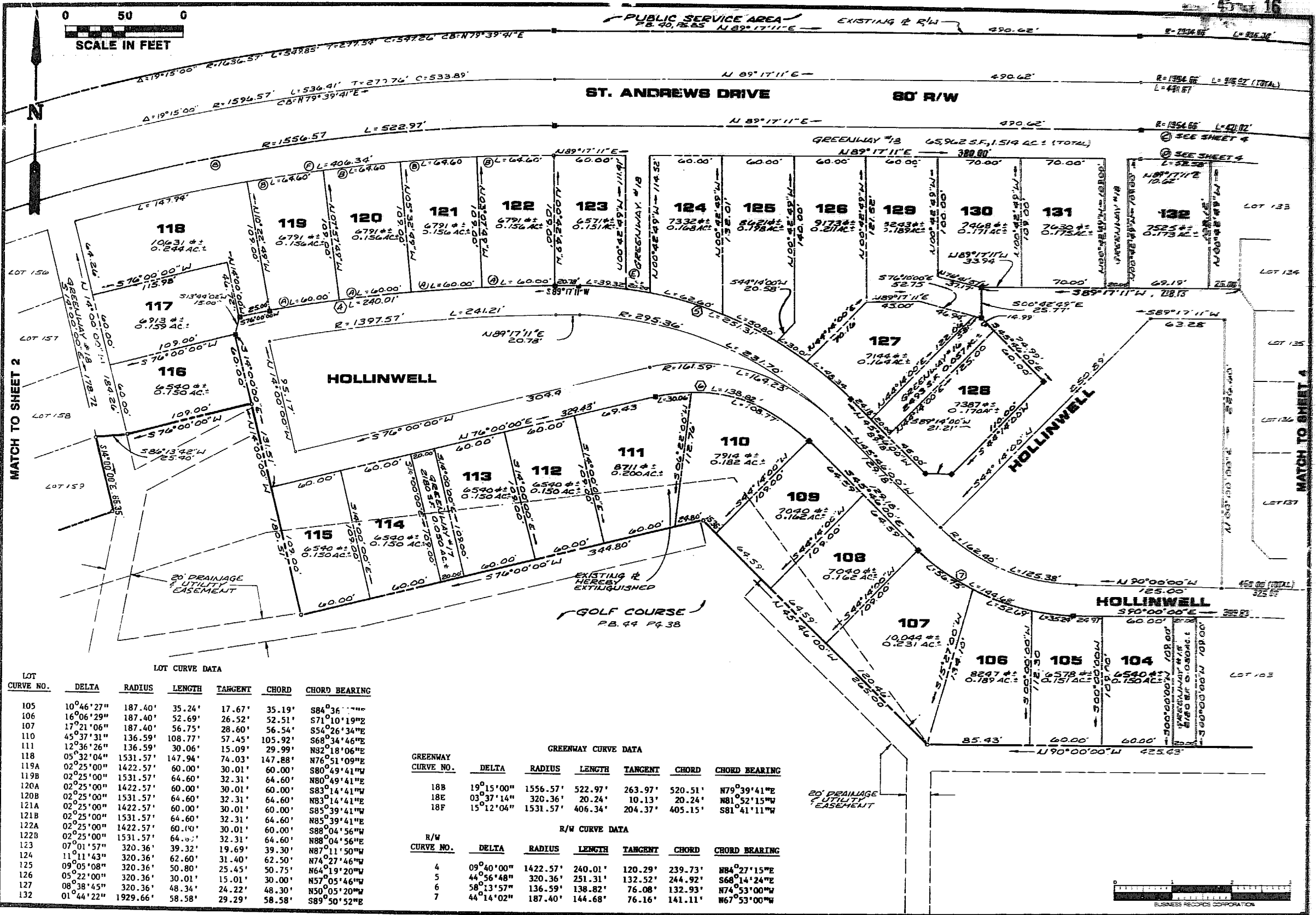




PUBLIC SERVICE AREA
P.B. 40, 12, 25 N 89° 17' 11" E EXISTING & R/W 490.62'

ST. ANDREWS DRIVE 80' R/W



MATCH TO SHEET 2

MATCH TO SHEET 4

LOT CURVE DATA

LOT CURVE NO.	DELTA	RADIUS	LENGTH	TANGENT	CHORD	CHORD BEARING
105	10°46'27"	187.40'	35.24'	17.67'	35.19'	S84°36'11"W
106	16°06'29"	187.40'	52.69'	26.52'	52.51'	S71°10'19"E
107	17°21'08"	187.40'	56.75'	28.60'	56.54'	S54°26'34"E
110	45°37'31"	136.59'	108.77'	57.45'	105.92'	S68°34'46"E
111	12°36'26"	136.59'	30.06'	15.09'	29.99'	N92°18'06"E
118	05°32'04"	1531.57'	147.94'	74.03'	147.88'	N76°51'09"E
119A	02°25'00"	1422.57'	60.00'	30.01'	60.00'	S80°49'41"W
119B	02°25'00"	1531.57'	64.60'	32.31'	64.60'	N80°49'41"E
120A	02°25'00"	1422.57'	60.00'	30.01'	60.00'	S83°14'41"W
120B	02°25'00"	1531.57'	64.60'	32.31'	64.60'	N83°14'41"E
121A	02°25'00"	1422.57'	60.00'	30.01'	60.00'	S85°39'41"W
121B	02°25'00"	1531.57'	64.60'	32.31'	64.60'	N85°39'41"E
122A	02°25'00"	1422.57'	60.00'	30.01'	60.00'	S88°04'56"W
122B	02°25'00"	1531.57'	64.60'	32.31'	64.60'	N88°04'56"E
123	07°01'57"	320.36'	39.32'	19.69'	39.30'	N87°11'50"W
124	11°11'43"	320.36'	62.60'	31.40'	62.50'	N74°27'46"W
125	09°05'08"	320.36'	50.80'	25.45'	50.75'	N64°19'20"W
126	05°22'00"	320.36'	30.01'	15.01'	30.00'	N57°05'46"W
127	08°38'45"	320.36'	48.34'	24.22'	48.30'	N50°05'20"W
132	01°44'22"	1929.66'	58.58'	29.29'	58.58'	S89°50'52"E

GREENWAY CURVE DATA

GREENWAY CURVE NO.	DELTA	RADIUS	LENGTH	TANGENT	CHORD	CHORD BEARING
18B	19°15'00"	1556.57'	522.97'	263.97'	520.51'	N79°39'41"E
18E	03°37'14"	320.36'	20.24'	10.13'	20.24'	N81°52'15"W
18F	15°12'04"	1531.57'	406.34'	204.37'	405.15'	S81°41'11"W

R/W CURVE DATA

R/W CURVE NO.	DELTA	RADIUS	LENGTH	TANGENT	CHORD	CHORD BEARING
4	09°40'00"	1422.57'	240.01'	120.29'	239.73'	N84°27'15"E
5	44°56'48"	320.36'	251.31'	132.52'	244.92'	S68°14'24"E
6	58°13'57"	136.59'	138.82'	76.08'	132.93'	N74°53'00"W
7	44°14'02"	187.40'	144.68'	76.16'	141.11'	N67°53'00"W



AES, a professional corporation
1781 Jamestown Road, Williamsburg, Va. 23185
804-253-0040
Engineering, Planning, Surveying

PLAT OF
FORD'S COLONY
@ **WILLIAMSBURG**
SECTION X
LOT 104 TO LOT 132
POWhatan District JAMES CITY COUNTY VIRGINIA



No.	DATE	REVISION / COMMENT / NOTE	BY

Designed: JRE
Drawn: C.A.E.
Scale: 1" = 50'
Date: 10/15/10
Project No.: 5688
Drawing No.:
3 of 5