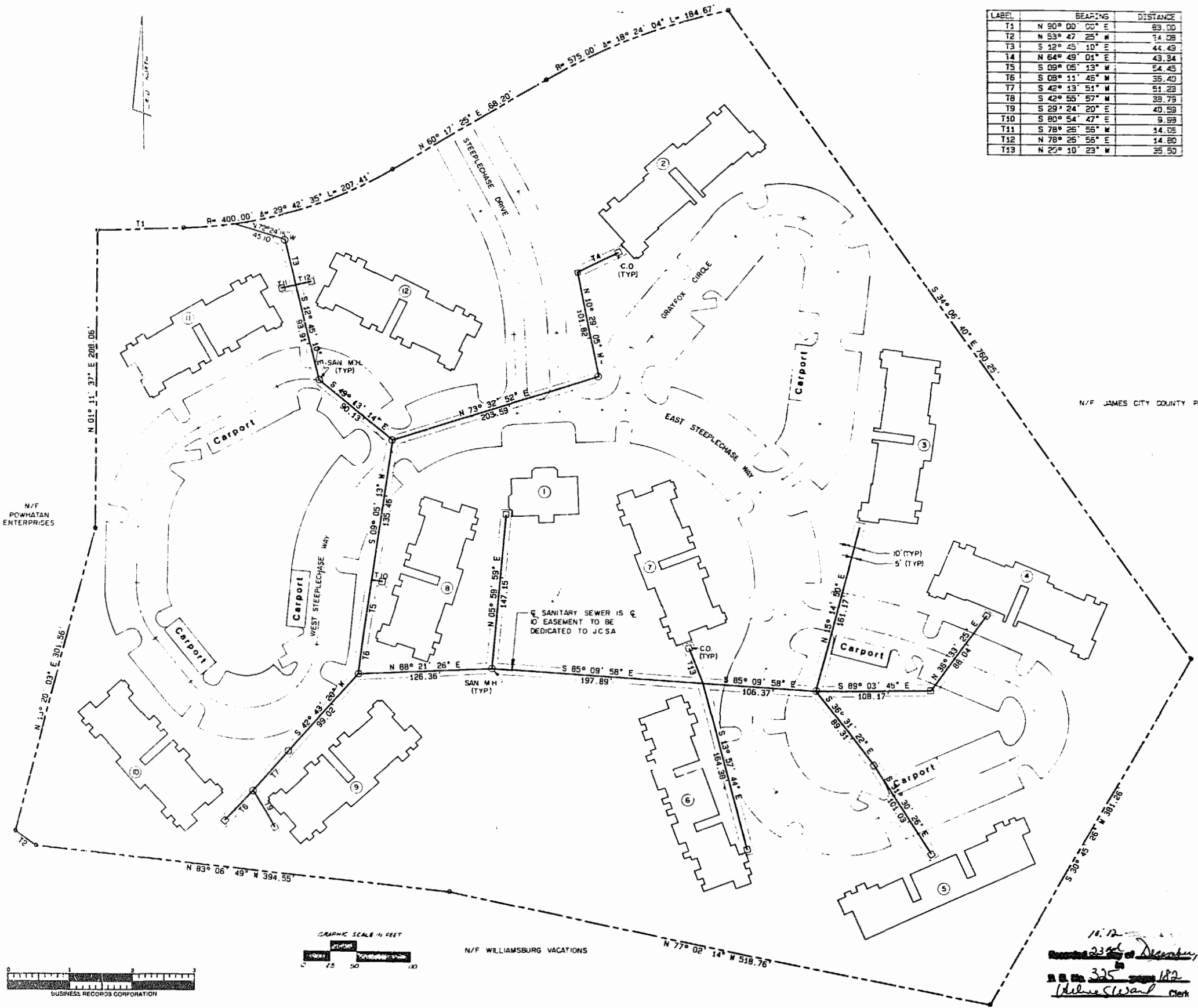


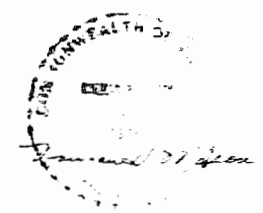
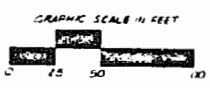
LABEL	BEARING	DISTANCE
T1	N 90° 00' 00" E	83.00
T2	N 53° 47' 25" W	14.08
T3	S 12° 45' 10" E	44.43
T4	N 64° 49' 01" E	43.34
T5	S 09° 05' 13" W	54.45
T6	S 08° 11' 45" W	35.40
T7	S 42° 13' 51" W	51.23
T8	S 42° 55' 57" W	39.79
T9	S 29° 24' 20" E	40.59
T10	S 80° 54' 47" E	9.59
T11	S 78° 25' 55" W	14.05
T12	N 78° 25' 55" E	14.80
T13	N 25° 10' 23" W	35.50



N/F POWHATAN ENTERPRISES

N/F JAMES CITY COUNTY PARK

N/F WILLIAMSBURG VACATIONS



PLAT
OF
SANITARY SEWER EASEMENT
TO BE DEDICATED FROM
JAMES OXFORD LIMITED PARTNERSHIP
TO
JAMES CITY SERVICE AUTHORITY
JAMES CITY COUNTY, VIRGINIA
DATE: 11 / 3 / 86 SCALE: 1" = 60'
LANGLEY and McDONALD
A PROFESSIONAL CORPORATION
ENGINEERS - PLANNERS - SURVEYORS
VIRGINIA BEACH and WILLIAMSBURG, VIRGINIA

11.12
23rd December, 1986
325
Deline Steward Clerk