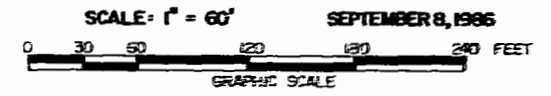


I HEREBY CERTIFY THAT THIS SURVEY TO THE BEST OF MY KNOWLEDGE AND BELIEF, IS CORRECT AND COMPLIES WITH THE MINIMUM PROCEDURES AND STANDARDS ESTABLISHED BY THE VIRGINIA BOARD OF ARCHITECTS PROFESSIONAL ENGINEERS, LAND SURVEYORS AND CERTIFIED LANDSCAPE ARCHITECTS.

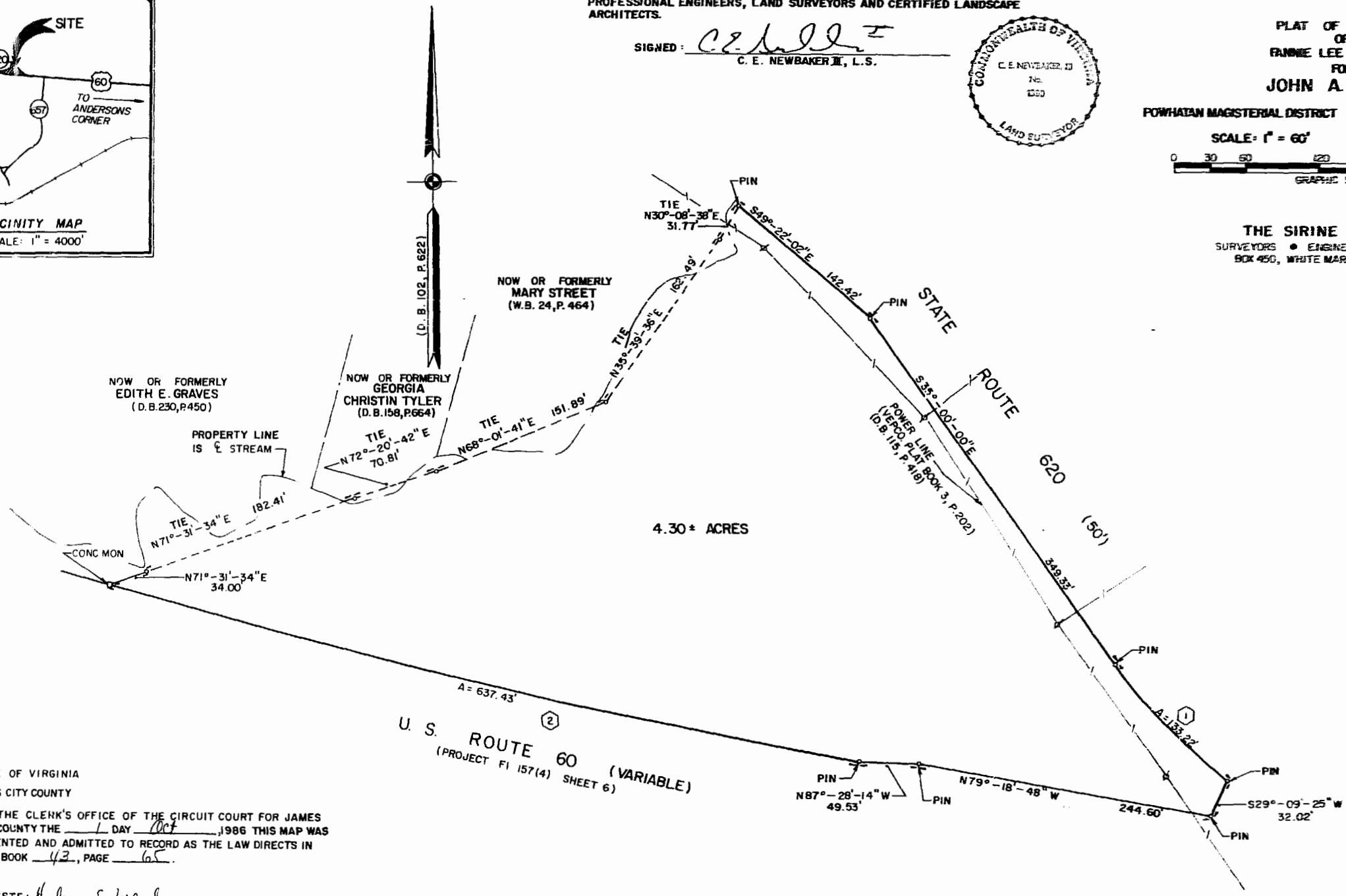
SIGNED: C. E. Newbaker II
C. E. NEWBAKER II, L.S.



PLAT OF PROPERTY OF
FANNIE LEE RUTHERFORD
FOR (D.B. 102, P. 622, D.B. 111, P. 455)
JOHN A. HOWARD
POWHATAN MAGISTERIAL DISTRICT JAMES CITY COUNTY, VIRGINIA



THE SIRINE GROUP, LTD.
SURVEYORS • ENGINEERS • PLANNERS
BOX 450, WHITE MARSH, VIRGINIA 23183



STATE OF VIRGINIA
JAMES CITY COUNTY
IN THE CLERK'S OFFICE OF THE CIRCUIT COURT FOR JAMES CITY COUNTY THE 1 DAY of Oct, 1986 THIS MAP WAS PRESENTED AND ADMITTED TO RECORD AS THE LAW DIRECTS IN PLAT BOOK 43, PAGE 65.

TESTE: Helene S. Ward
CLERK
BY: Claydon H. Bond

CURVE DATA				
NO.	RADIUS	DELTA	TANGENT	ARC
1	419.10'	18°-12'-45"	67.18'	133.22'
2	5681.58'	6°-25'-41"	319.05'	637.43'

PROPERTY IS TAX MAP 11, PARCEL 8
53
Recorded 1st day of Oct, 1986
P. B. No. 316 page 94
Helene S. Ward Clerk

