

LOTS CURVE TABLE

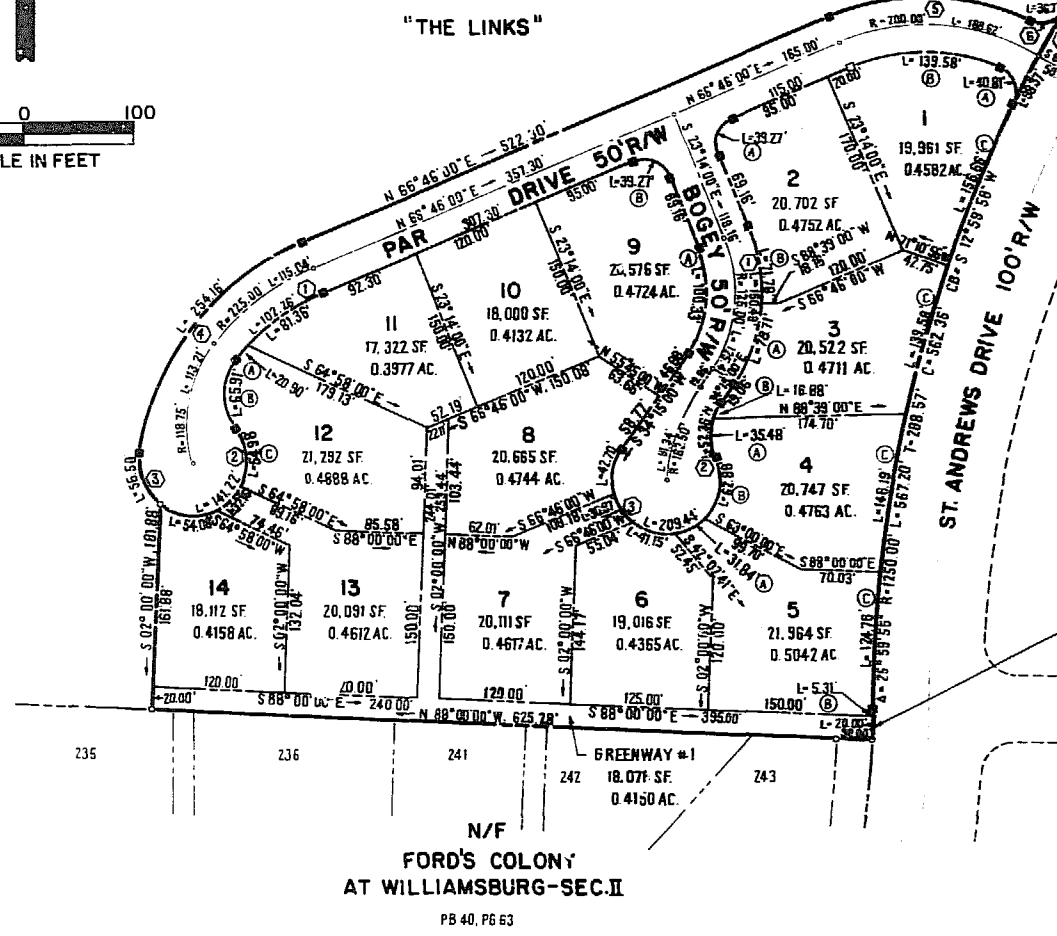
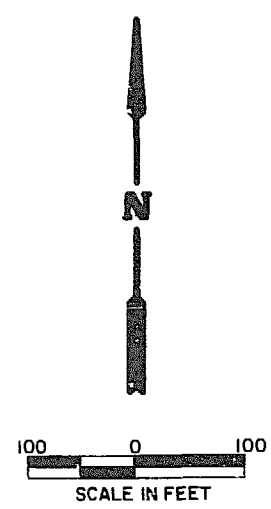
LOT	DELTA	RADIUS	LENGTH	TANGENT	CHORD	CHORD BEARING
1A	93°31'54"	25.00'	40.21'	26.55'	36.43	N20°46'02"E
1B	45°42'01"	175.00'	139.58'	73.74'	135.91'	N89°17'01"E
1C	07°10'51"	1250.00'	156.66'	78.44'	156.56	S2°24'30"W
2A	90°00'00"	25.00'	39.27'	25.00'	35.36'	N11°46'00"E
2B	27°25'09"	150.00'	71.78'	36.59'	71.10'	N83°11'25"W
3A	30°03'51"	150.00'	78.71'	40.28'	77.81'	N89°13'05"E
3B	19°20'22"	50.00'	16.88'	8.52'	15.80'	N74°34'45"E
3C	06°23'53"	1250.00'	139.58'	69.86'	139.51'	S15°37'00"W
4A	40°39'38"	50.00'	35.48'	18.53'	34.74'	N16°27'11"W
4B	72°03'10"	50.00'	62.88'	36.36'	58.82'	N16°27'35"E
4C	06°42'04"	1250.00'	146.19'	73.18'	146.11'	S89°04'09"W
5A	36°29'02"	50.00'	31.84'	16.40'	31.30'	N64°32'41"E
5B	00°25'09"	725.00'	5.31'	2.65'	5.31'	S90°12'35"W
5C	05°43'07"	1250.00'	124.76'	62.43'	124.71'	S72°52'34"W
6	47°09'23"	50.00'	41.15'	21.82'	40.08'	S73°38'07"E
7	35°22'42"	50.00'	30.87'	15.95'	30.39'	S72°21'04"E
8	48°55'43"	50.00'	42.70'	22.75'	41.41'	S69°47'09"W
9A	57°29'00"	100.00'	100.33'	54.84'	96.17'	S65°39'36"W
9B	90°00'00"	25.00'	39.27'	25.00'	35.36'	S66°16'00"E
11	25°18'30"	200.00'	81.36'	41.25'	80.90'	S55°06'45"E
12A	05°59'12"	200.00'	20.90'	10.46'	20.89'	N40°27'54"E
12B	75°31'21"	50.00'	65.91'	38.73'	61.24'	N60°17'22"W
12C	63°00'08"	50.00'	54.98'	30.54'	52.25'	N66°22'59"W
13	36°50'58"	50.00'	32.16'	16.66'	31.61'	N43°22'34"E
14	61°58'21"	50.00'	54.08'	30.03'	51.48'	S47°12'45"E

GREENWAY CURVE TABLE

LOT	DELTA	RADIUS	LENGTH	TANGENT	CHORD	CHORD BEARING
1	01°34'51"	725.00'	20.00'	10.00'	20.00	S91°12'35"W

R/W CURVE TABLE

STREET NO.	CURVE NO.	DELTA	RADIUS	LENGTH	TANGENT	CHORD	CHORD BEARING
BOGEY	1	57°29'00"	150.00'	150.49'	82.26'	144.26'	S25°30'20"W
BOGEY	2	60°00'00"	50.00'	52.36'	28.87'	50.00'	S64°15'00"W
BOGEY	3	340°00'00"	50.00'	209.44'			
PAR DRIVE	1	29°17'42"	200.00'	102.26'	52.27'	101.15'	S52°07'09"W
PAR DRIVE	2	161°49'28"	50.00'	141.22'	312.59'	98.74'	S42°51'41"W
PAR DRIVE	3	64°44'35"	50.00'	56.50'	31.70'	53.54'	N23°51'15"W
PAR DRIVE	4	58°15'00"	250.00'	254.16'	139.29'	243.36'	N3°38'30"W
PAR DRIVE	5	48°01'07"	225.00'	188.57'	100.22'	183.10'	S89°13'27"W
PAR DRIVE	6	84°16'40"	25.00'	36.77'	22.62'	33.55'	N72°38'47"E
PAR DRIVE	7	04°30'31"	1250.00'	98.37'	49.21'	98.34'	S26°15'11"W

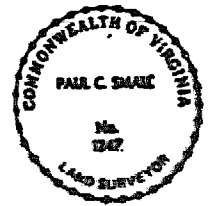


A = 02°00'00"
 R = 725.00'
 L = 75.31'
 T = 12.66'
 C = 75.31'
 CB = S 01°00'00"W



AES, a professional corporation
 1761 Jamestown Road, Williamsburg, Va. 23185
 804-253-0340
 Engineering, Planning, Surveying

PLAT OF
FORD'S COLONY
AT WILLIAMSBURG
SECTION IV
LOT 1 TO LOT 14
 COMMONWEALTH OF VIRGINIA
 PAUL C. SMALE
 No. 1247
 LAND SURVEYOR
 POWHATAN DISTRICT, JAMES CITY COUNTY, VIRGINIA



DATE	REVISION / COMMENTS / NOTE

Designed	Drawn
RESEARCH	ED
Scale	Date
1"=100'	10/1/2004
Project No.	
5882	
Revised No.	
2 of 2	