

FUTURE DEVELOPMENT



FUTURE DEVELOPMENT

DOGLEG DRIVE

50' R/W

N 71° 53' 00" E — 204.47'

N 47° 33' 20" E — 132.27'

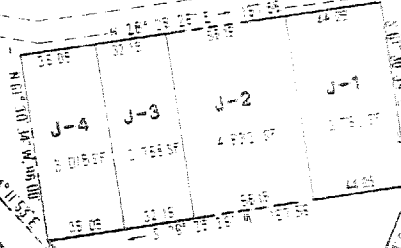
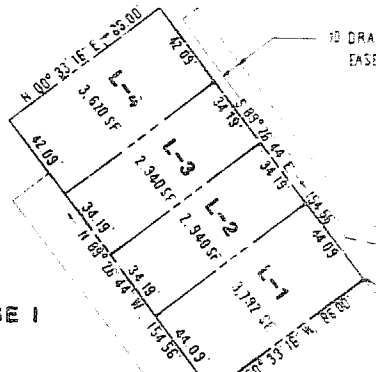
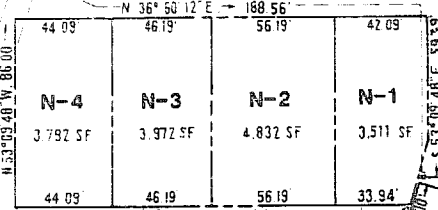
70' DRAINAGE & UTILITY EASEMENT

10' DRAINAGE & UTILITY EASEMENT

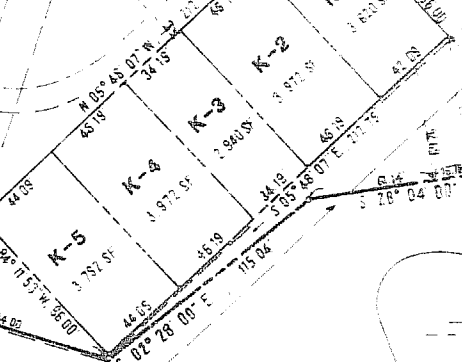
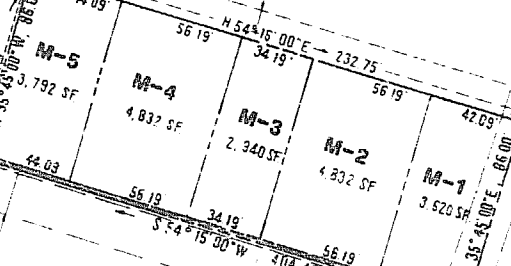
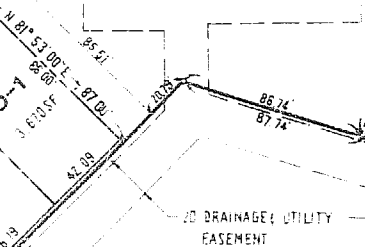
PARCEL-A
220,289 SF
5,057I

PARCEL-A

'THE LINKS' PHASE I



FUTURE PHASE



10' DRAINAGE & UTILITY EASEMENT

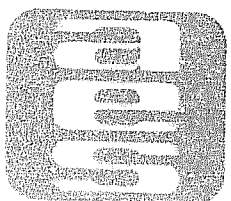
20' DRAINAGE & UTILITY EASEMENT

10' DRAINAGE & UTILITY EASEMENT

411
FORD'S COLONY
SECTION ONE
P8-26
76-62

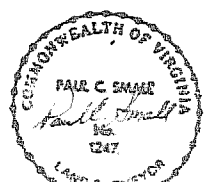
6TH PARAWAY POND

7TH GREEN



AES, a professional corporation
1761 Jamestown Road, Williamsburg, Va. 23185
804-253-0040
Engineering, Planning, Surveying

PLAT OF
**FORD'S COLONY
AT WILLIAMSBURG**
'THE LINKS'- PHASE I
POWhatan DISTRICT JAMES CITY COUNTY VIRGINIA



NO.	DATE	REVISION / COMMENT / NOTE
1	5/15/88	REVISED BUILDINGS D PER ARCHITECTURAL CHANGES
2	3/10/85	REVISED PER ARCHITECTURAL CHANGES

Designed	Name
DESIGNED	ED
PLANNED	ED
DRAWN	ED
CHECKED	ED
DATE	1988
PROJECT NO.	8802
DRAWING NO.	3014