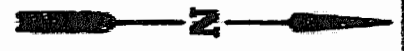




LOCATION MAP



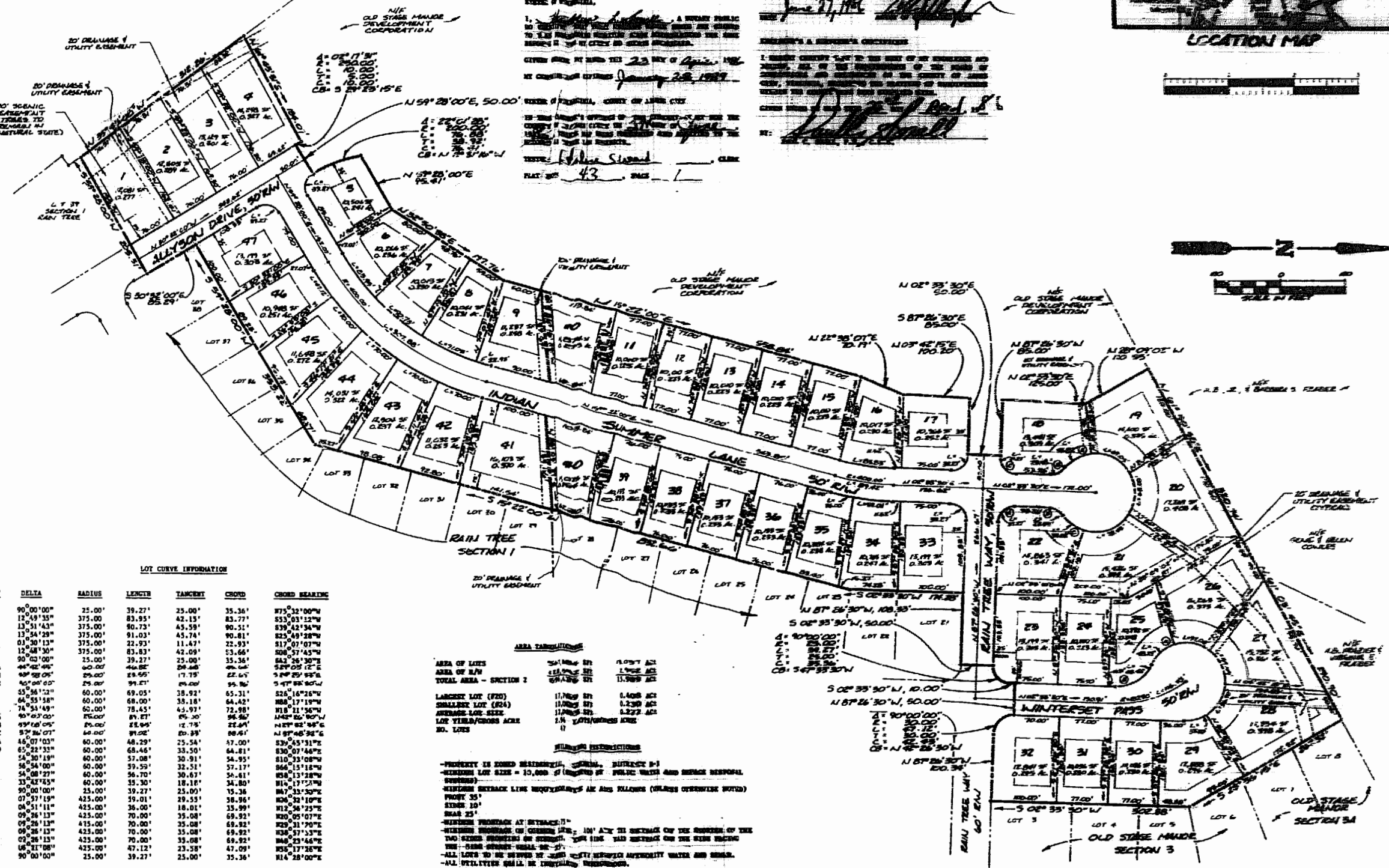
SCALE IN FEET

PROPERTY OF RECORD & REQUISITION
 THIS SUBDIVISION HAS BEEN RECORDED AND IS APPROVED BY THE BOARD OF SUPERVISORS OF THE COUNTY OF JAMES CITY, VIRGINIA.
 TITLE: *Plan of Subdivision*
 BY: *John C. Galt, Jr.*
 DATE: *June 21, 1966*

STATE OF VIRGINIA
 I, *John C. Galt, Jr.*, A PUBLIC SURVEYOR AND LICENSED LAND SURVEYOR, HAVE BEEN DULY SWORN TO AND HAVE DEPOSED THAT THE FOREGOING IS A TRUE AND CORRECT STATEMENT OF THE FACTS AND CIRCUMSTANCES RELATIVE TO THE SUBDIVISION HEREIN DESCRIBED.
 GIVEN UNDER MY HAND AND SEAL THIS *23* DAY OF *June*, 1966
 BY: *John C. Galt, Jr.*
 STATE OF VIRGINIA, COUNTY OF JAMES CITY
 I, *John C. Galt, Jr.*, PUBLIC SURVEYOR, DO HEREBY CERTIFY THAT THE FOREGOING IS A TRUE AND CORRECT STATEMENT OF THE FACTS AND CIRCUMSTANCES RELATIVE TO THE SUBDIVISION HEREIN DESCRIBED.
 GIVEN UNDER MY HAND AND SEAL THIS *23* DAY OF *June*, 1966
 BY: *John C. Galt, Jr.*
 STATE OF VIRGINIA, COUNTY OF JAMES CITY

DESIGNER'S & ENGINEER'S CERTIFICATE
 I, *John C. Galt, Jr.*, A PUBLIC SURVEYOR AND LICENSED LAND SURVEYOR, HAVE BEEN DULY SWORN TO AND HAVE DEPOSED THAT THE FOREGOING IS A TRUE AND CORRECT STATEMENT OF THE FACTS AND CIRCUMSTANCES RELATIVE TO THE SUBDIVISION HEREIN DESCRIBED.
 GIVEN UNDER MY HAND AND SEAL THIS *23* DAY OF *June*, 1966
 BY: *John C. Galt, Jr.*

PLAT NO. *43* PAGE *1*



LOT CURVE INFORMATION

LOT	DELTA	RADIUS	LENGTH	TANGENT	CHORD	CHORD BEARING
3	90°00'00"	25.00'	39.27'	25.00'	35.36'	N75°32'00"W
6	12°49'35"	375.00'	83.95'	42.13'	83.77'	S53°03'12"W
7	13°51'43"	375.00'	80.73'	45.59'	90.31'	S39°42'34"W
8	13°54'29"	375.00'	91.03'	45.74'	90.81'	S25°49'28"W
9	03°30'13"	375.00'	22.93'	11.47'	22.93'	S17°07'07"W
13	12°58'30"	375.00'	83.83'	42.09'	83.66'	S30°37'43"W
17	90°03'00"	25.00'	39.27'	25.00'	35.36'	S25°03'12"E
18A	44°42'45"	60.00'	44.86'	24.46'	49.64'	S29°02'12"E
18B	44°42'45"	60.00'	44.86'	24.46'	49.64'	S29°02'12"E
18C	44°42'45"	60.00'	44.86'	24.46'	49.64'	S29°02'12"E
19	35°58'12"	60.00'	69.05'	38.92'	65.31'	S26°16'26"W
20	04°35'58"	60.00'	68.00'	35.18'	64.42'	N88°17'19"W
21	14°54'48"	60.00'	78.45'	45.97'	72.98'	N18°21'56"W
22A	04°07'03"	60.00'	69.71'	35.20'	64.60'	N140°56'30"W
22B	04°07'03"	60.00'	69.71'	35.20'	64.60'	N140°56'30"W
22C	04°07'03"	60.00'	69.71'	35.20'	64.60'	N140°56'30"W
23A	46°07'03"	60.00'	48.29'	25.54'	57.00'	S35°45'31"E
23B	46°07'03"	60.00'	48.29'	25.54'	57.00'	S35°45'31"E
23C	46°07'03"	60.00'	48.29'	25.54'	57.00'	S35°45'31"E
24	04°07'03"	60.00'	69.71'	35.20'	64.60'	N140°56'30"W
25	54°08'27"	60.00'	89.71'	59.20'	94.50'	N140°56'30"W
26	54°08'27"	60.00'	89.71'	59.20'	94.50'	N140°56'30"W
27	33°42'45"	60.00'	55.30'	18.18'	34.80'	N11°17'27"W
28	33°42'45"	60.00'	55.30'	18.18'	34.80'	N11°17'27"W
29	90°00'00"	25.00'	39.27'	25.00'	35.36'	N47°33'32"E
30	07°57'19"	425.00'	59.01'	29.55'	58.96'	N36°32'10"E
31	04°51'11"	425.00'	38.00'	18.01'	35.99'	N12°54'25"E
32	09°28'13"	425.00'	70.00'	35.08'	69.92'	N20°07'07"E
33	09°28'13"	425.00'	70.00'	35.08'	69.92'	N20°07'07"E
34	09°28'13"	425.00'	70.00'	35.08'	69.92'	N20°07'07"E
35	09°28'13"	425.00'	70.00'	35.08'	69.92'	N20°07'07"E
36	09°28'13"	425.00'	70.00'	35.08'	69.92'	N20°07'07"E
37	09°28'13"	425.00'	70.00'	35.08'	69.92'	N20°07'07"E
38	09°28'13"	425.00'	70.00'	35.08'	69.92'	N20°07'07"E
39	09°28'13"	425.00'	70.00'	35.08'	69.92'	N20°07'07"E
40	09°28'13"	425.00'	70.00'	35.08'	69.92'	N20°07'07"E
41	09°28'13"	425.00'	70.00'	35.08'	69.92'	N20°07'07"E
42	09°28'13"	425.00'	70.00'	35.08'	69.92'	N20°07'07"E
43	09°28'13"	425.00'	70.00'	35.08'	69.92'	N20°07'07"E
44	09°28'13"	425.00'	70.00'	35.08'	69.92'	N20°07'07"E
45	09°28'13"	425.00'	70.00'	35.08'	69.92'	N20°07'07"E
46	09°28'13"	425.00'	70.00'	35.08'	69.92'	N20°07'07"E
47	90°00'00"	25.00'	39.27'	25.00'	35.36'	N14°28'00"E

AREA TABULATION

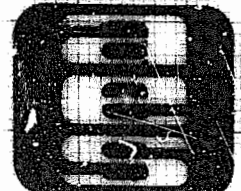
AREA OF LOTS	30.1648 AC	1.057 AC
AREA OF R/W	11.0121 AC	1.908 AC
TOTAL AREA - SECTION 2	41.1770 AC	2.965 AC

AREA TABULATION

LARGEST LOT (#20)	17.769 AC	0.468 AC
SMALLEST LOT (#24)	11.012 AC	0.239 AC
AVERAGE LOT SIZE	11.012 AC	0.277 AC
LOT YIELD/ACRES	1.54	1.0000 ACRES
NO. LOTS	11	

UTILITY RESTRICTIONS

PROPERTY IS ZONED RESIDENTIAL, GENERAL, DISTRICT R-1
 MINIMUM LOT SIZE = 10,000 SQ FEET OF PUBLIC WATER AND SEWER SERVICE
 SEWER SERVICE
 MINIMUM ENTRANCE LINE REQUIREMENTS ARE AS FOLLOWS (UNLESS OTHERWISE NOTED)
 PROFILE 35'
 SINKS 10'
 DEAR 25'
 MINIMUM SPACING AT ENTRANCE 11'
 MINIMUM SPACING ON GROUND 12', 10' AT THE ENTRANCE OF THE SERVICE OF THE TWO SERVICE CONNECTIONS ON THE LINE. THE ENTRANCE OF THE SERVICE CONNECTIONS SHALL BE 5'
 ALL LOTS TO BE SERVED BY PUBLIC WATER SERVICE AUTHORITY WATER AND SEWER.
 ALL UTILITIES SHALL BE INSTALLED UNDERGROUND.



AES, a professional corporation
 1781 Jamestown Road, Williamsburg, Va. 23185
 804-253-0040
 Engineering, Planning, Surveying

PLAT OF SUBDIVISION
RAIN TREE SECTION 1
 OWNER / DEVELOPER:
OLD STAGE MANOR DEVELOPMENT CORPORATION
 CHESAPEAKE DISTRICT, JAMES CITY COUNTY, VIRGINIA



DATE	
REVISION / CORRECT / NOTE	

PLAT	
------	--