

CEDAR GROVE CEMETERY

**STREET NAME CHART**

DESTINATION	NIGHT-OF-WAY	NAME
'A' STREET	50' R/W	WILLIAM WAY
'A' COURT	30' R/W	CHATELAIN CLOSE
'B' COURT	30' R/W	CAPTAIN'S COURT
'C' COURT	30' R/W	HANK CLOSE
'D' COURT	30' R/W	HARSHED NEWS
'E' COURT	30' R/W	ST. SIMONE COURT
'F' COURT	30' R/W	CORIN CLOSE

**SPECIAL NOTES**

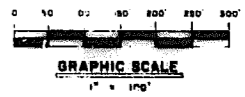
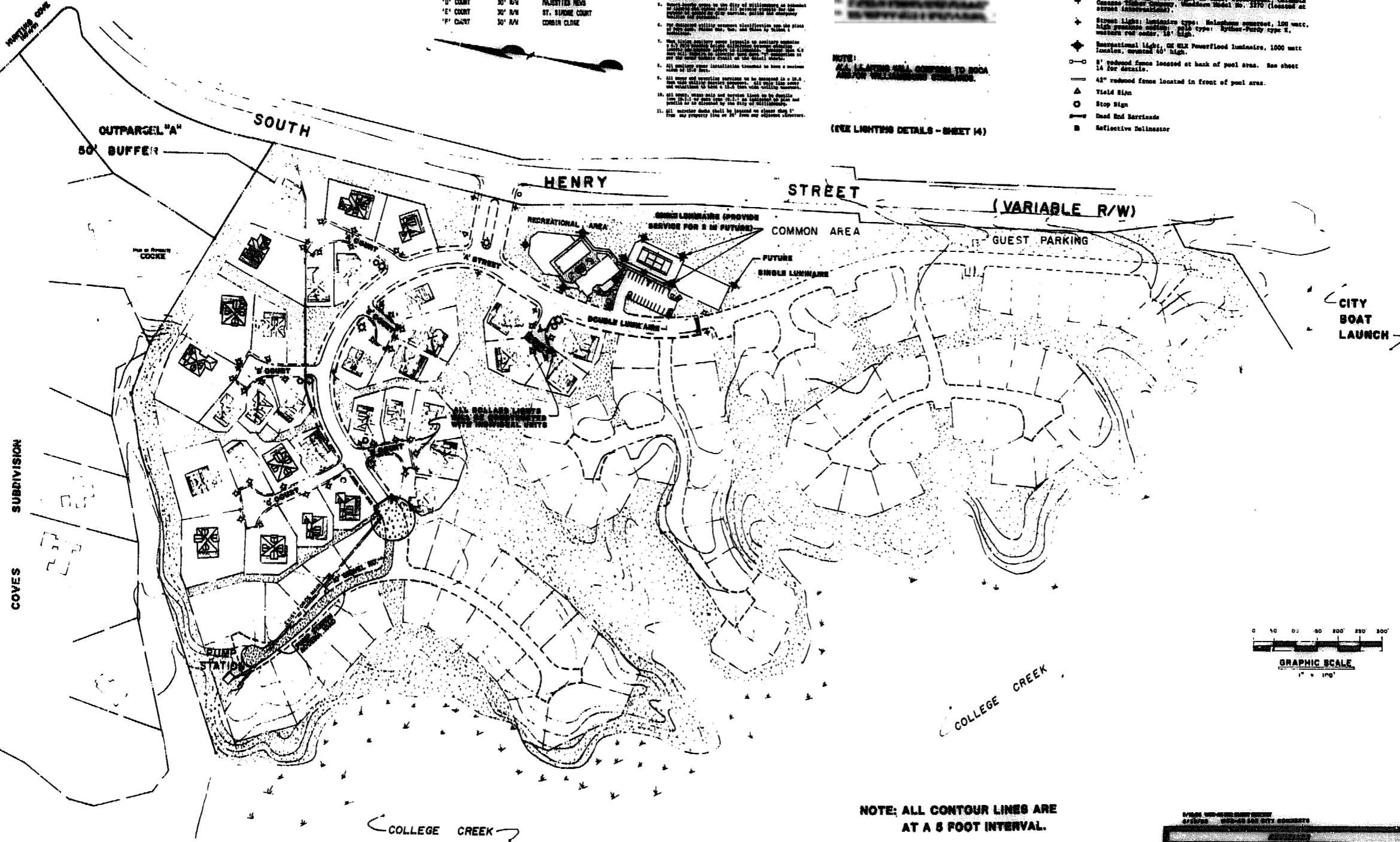
1. Electrical, plumbing, and all other utility lines shall be shown on this plan. All utility lines shall be shown in accordance with the City of Williamsburg standards. All utility lines shall be shown in accordance with the City of Williamsburg standards.
2. All utility lines shall be shown in accordance with the City of Williamsburg standards.
3. All utility lines shall be shown in accordance with the City of Williamsburg standards.
4. All utility lines shall be shown in accordance with the City of Williamsburg standards.
5. All utility lines shall be shown in accordance with the City of Williamsburg standards.
6. All utility lines shall be shown in accordance with the City of Williamsburg standards.
7. All utility lines shall be shown in accordance with the City of Williamsburg standards.
8. All utility lines shall be shown in accordance with the City of Williamsburg standards.
9. All utility lines shall be shown in accordance with the City of Williamsburg standards.
10. All utility lines shall be shown in accordance with the City of Williamsburg standards.
11. All utility lines shall be shown in accordance with the City of Williamsburg standards.

NOTE: ALL LIGHTING SHALL CONFORM TO BOCA AMERICAN WIRELESS STANDARDS.

(SEE LIGHTING DETAILS - SHEET 14)

**LEGEND**

- ◆ Floodlight, 50" high, 25 watt, high pressure sodium, Columbia General Lighting Company, model 2500 (located at each driveway, on 1/2 mile each individual lot).
- ◆ Street sign light, 50" high, 15 watt, fluorescent, Columbia General Lighting Company, Model No. 2170 (located at street intersections).
- ◆ Street Light, luminaire type: Hemisphere compact, 100 watt, high pressure sodium, pole type: Ryther-Purdy type K, maximum pole height: 12' high.
- ◆ Recreational Light, 20' high, Powerflood luminaire, 1000 watt luminaire, maximum 12' high.
- 5' reduced fence located at bank of pool area. See sheet 14 for details.
- 42" reduced fence located in front of pool area.
- ▲ Yield Sign
- Stop Sign
- Dead End Barricade
- Reflective delineator



NOTE: ALL CONTOUR LINES ARE AT A 5 FOOT INTERVAL.

NOTE: THIS INDEX IS FOR REFERENCE ONLY, FOR CONSTRUCTION INFORMATION SEE SHEETS 1 THROUGH 5.

LIGHTING, LOT & UNIT MASTER INDEX  
**PORT ANNE**  
 PHASE ONE  
 WILLIAMSBURG, VIRGINIA

Designed: WSB/DF
Drawn: T/A
Checked: ASS
Scale: 1" = 100'
Date: 2-20-85
File No: E-24426
Project No: 0402
Sheet No:

