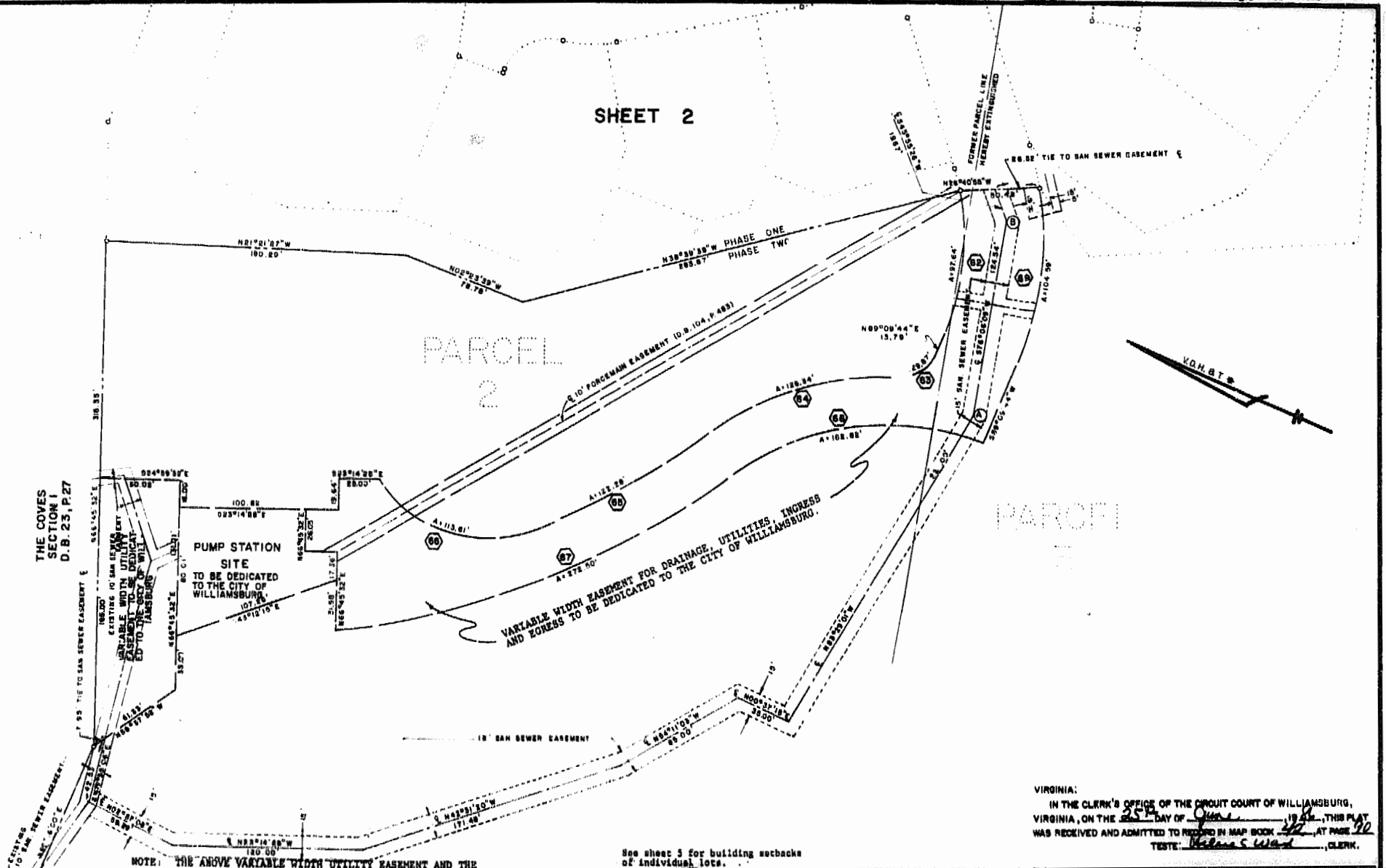


SHEET 2

PARCEL 2

PARCEL 1



THE COVES SECTION I D.B. 23, P. 27

PUMP STATION SITE TO BE DEDICATED TO THE CITY OF WILLIAMSBURG

VARIABLE WIDTH EASEMENT FOR DRAINAGE, UTILITIES, INGRESS AND EGRESS TO BE DEDICATED TO THE CITY OF WILLIAMSBURG

NOTE: THE ABOVE VARIABLE WIDTH UTILITY EASEMENT AND THE PUMP STATION SITE HAVE BEEN PREVIOUSLY DEDICATED BUT ARE OF NON-SPECIFIC DIMENSION (DB 39 p. 176).

See sheet 3 for building setbacks of individual lots.

VIRGINIA: IN THE CLERK'S OFFICE OF THE CIRCUIT COURT OF WILLIAMSBURG, VIRGINIA, ON THE 25th DAY OF June, 1988, THIS PLAT WAS RECEIVED AND ADMITTED TO RECORD IN MAP BOOK 42, AT PAGE 90. TESTE: *Roberta S. Ward*, CLERK.

* PROJECT NO. U000-187-101, PE-101, RW-201 C-601

TA
Talbot & Associates, Ltd.
 Architects, Engineers, Planners, Surveyors, Landscape Architects
 8001 Landmark Square, Virginia Beach, Va. 23452
 777 Third St. S.W., Suite 800, Newport News, Va. 23606

| | |
|-------------------|---------------|
| DRAWN BY: KLS | DATE: 9-20-88 |
| DRAFT. CHK. WDM | DATE: 9-30-88 |
| COMP. CHK. J.W.L. | DATE: 9-20-88 |
| ENG. CHK. _____ | DATE: 9-20-88 |
| DEPT. HEAD: WDM | DATE: 9-20-88 |
| PROJECT NO: 84019 | |
| SCALE: 1" = 80' | |
| FILE NO. 84019 | |

SUBDIVISION OF
PORT ANNE
 PHASE ONE
 WILLIAMSBURG, VIRGINIA
 SHEET 4 OF 5