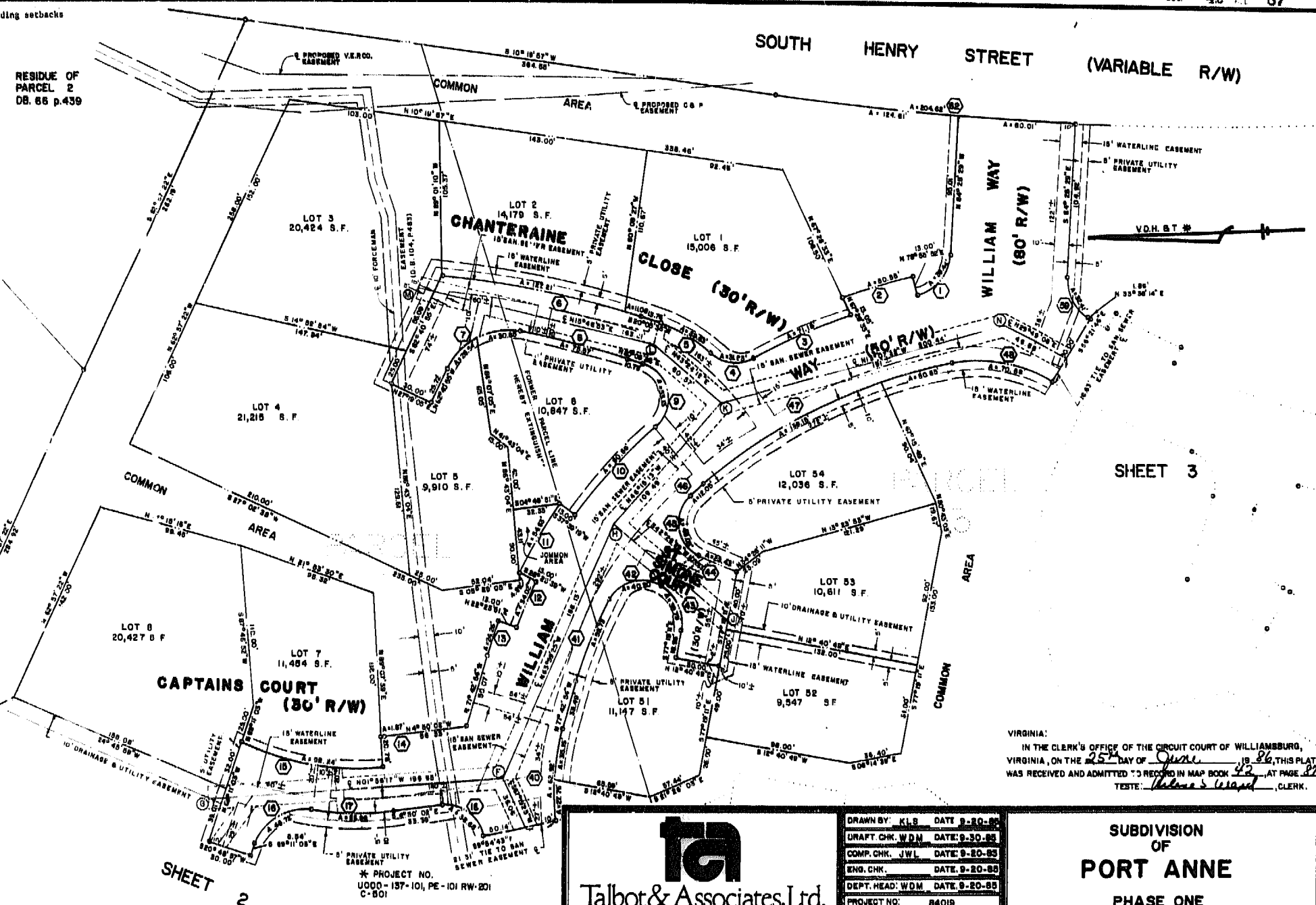


See sheet 3 for building setbacks of individual lots.

SOUTH HENRY STREET (VARIABLE R/W)

RESIDUE OF PARCEL 2 DB. 66 p.439

COCKE DB 39 p 247



SHEET 3

SHEET 2

* PROJECT NO. U000-137-101, PE-101 RW-201 C-501

VIRGINIA:
 IN THE CLERK'S OFFICE OF THE CIRCUIT COURT OF WILLIAMSBURG,
 VIRGINIA, ON THE 25th DAY OF June 1986, THIS PLAT
 WAS RECEIVED AND ADMITTED TO RECORD IN MAP BOOK 43, AT PAGE 87
 TESTE: Delores Island, CLERK.

TA
Talbot & Associates, Ltd.
 Architects, Engineers, Planners, Surveyors, Landscape Architects
 8001 Landmark Square, Virginia Beach, VA 23462
 110 Thimble Shoals Blvd., Newport News, VA 23646

DRAWN BY: KLS	DATE: 9-20-85
DRAFT. CHK. WDM	DATE: 9-30-85
COMP. CHK. JWL	DATE: 9-20-85
ENG. CHK.	DATE: 9-20-85
DEPT. HEAD: WDM	DATE: 9-20-85
PROJECT NO: 84019	
SCALE: 1" = 50'	
FILE NO. 84019	

SUBDIVISION OF PORT ANNE
PHASE ONE
WILLIAMSBURG, VIRGINIA
 SHEET 1 OF 5