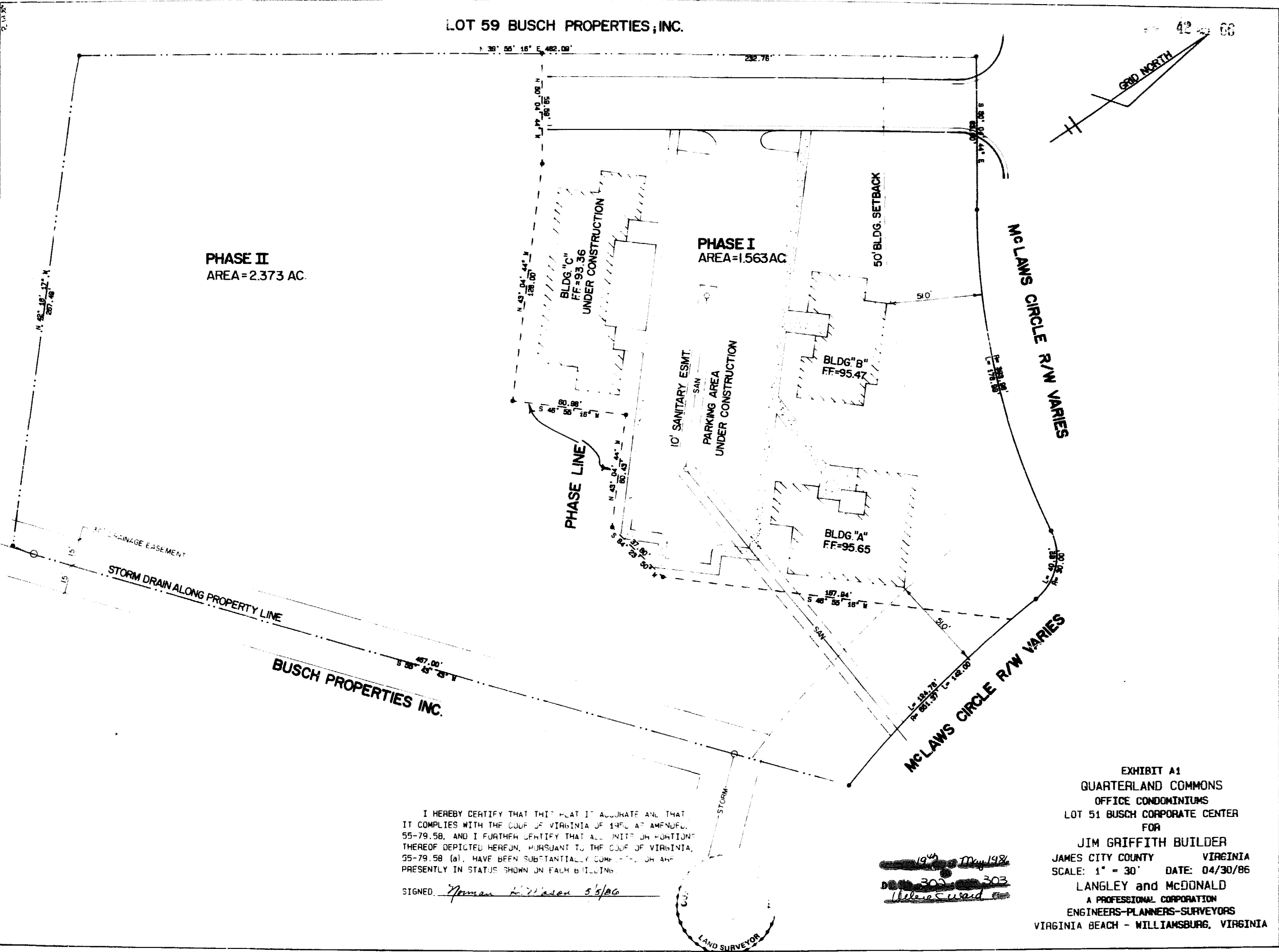


LOT 59 BUSCH PROPERTIES, INC.

42 08



PHASE II
AREA=2.373 AC.

PHASE I
AREA=1.563 AC

BLDG "C"
FF=93.36
UNDER CONSTRUCTION

BLDG "B"
FF=95.47

BLDG "A"
FF=95.65

10' SANITARY ESMT.
SAN
PARKING AREA
UNDER CONSTRUCTION

50' BLDG. SETBACK

McLAWS CIRCLE R/W VARIES

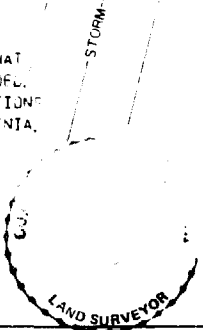
McLAWS CIRCLE R/W VARIES

STORM DRAIN ALONG PROPERTY LINE

BUSCH PROPERTIES INC.

I HEREBY CERTIFY THAT THIS PLAN IS ACCURATE AND THAT IT COMPLIES WITH THE CODE OF VIRGINIA OF 1950 AS AMENDED, 55-79.58, AND I FURTHER CERTIFY THAT ALL UNITS OR PORTIONS THEREOF DEPICTED HEREON, PURSUANT TO THE CODE OF VIRGINIA, 55-79.58 (a), HAVE BEEN SUBSTANTIALLY COMPLETED OR ARE PRESENTLY IN STATUS SHOWN ON EACH BUILDING.

SIGNED Norman K. Wilson 5/5/86



1948 May 1986
303 303
W. Wilson

EXHIBIT A1
QUARTERLAND COMMONS
OFFICE CONDOMINIUMS
LOT 51 BUSCH CORPORATE CENTER
FOR
JIM GRIFFITH BUILDER
JAMES CITY COUNTY VIRGINIA
SCALE: 1" = 30' DATE: 04/30/86
LANGLEY and McDONALD
A PROFESSIONAL CORPORATION
ENGINEERS-PLANNERS-SURVEYORS
VIRGINIA BEACH - WILLIAMSBURG, VIRGINIA