

CERTIFICATE OF APPROVAL:

THIS PLAT IS APPROVED AND MAY BE COMMITTED TO RECORD

Frank James City Mayor (SEAL)
FOR THE CITY OF WILLIAMSBURG, VA

OWNERS' CONSENT

THIS PLAT IS WITH THE FREE CONSENT AND IN ACCORDANCE WITH THE WISHES AND DESIRES OF THE UNDERSIGNED OWNERS.
SOUTH HENRY ENTERPRISES, A VA PARTNERSHIP
BY: WILLIAMSBURG REAL ESTATE AGENCY PARTNER
By: *William J. Rouse* DATE 2/12/86

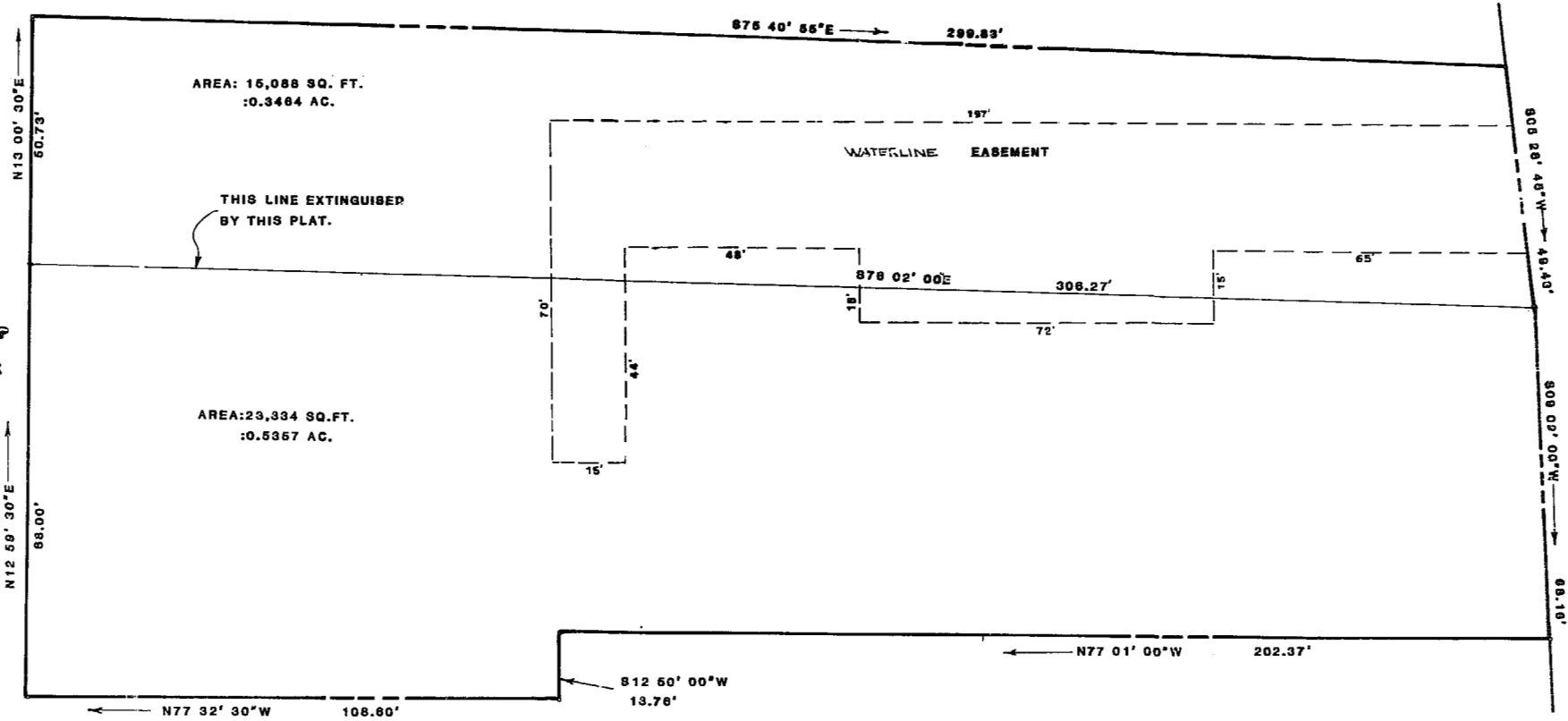
DATE _____

STATE OF VIRGINIA, CITY OF WILLIAMSBURG, IN THE CLERK'S OFFICE OF THE CIRCUIT COURT FOR THE CITY OF WILLIAMSBURG THE 19th DAY OF February, 1986 THE MAP SHOWN HERE ON WAS PRESENTED AND ADMITTED TO THE RECORDS AS THE LAW DIRECTS

TESTE: *Helen S. Sand* Clerk

CLERK: *Helen S. Sand*

PLAT BOOK: 420 PAGE 17



SOUTH HENRY STREET



6:11 p.m.
 Received 1986
 City of Feb 1986
 73
 819
Helen S. Sand



AES, a professional corporation
 1781 Jamestown Road, Williamsburg, Va. 23185
 804-253-0040
 Engineering, Planning, Surveying

PLAT OF SURVEY
 OF LAND STANDING IN THE NAME OF
 SOUTH HENRY ENTERPRISES, A VIRGINIA
 GENERAL PARTNERSHIP, LYING IN
 WILLIAMSBURG, VIRGINIA



No.	DATE	REVISION / COMMENT / NOTE	BY
1	2-12-86	REVISED UTILITIES EASEMENT	WJ

Designed	Drawn
W.L.M.	C.F.A.
Scale	Date
1"=20'	2-5-1986
Project No.	
5888	
Drawing No.	
1	