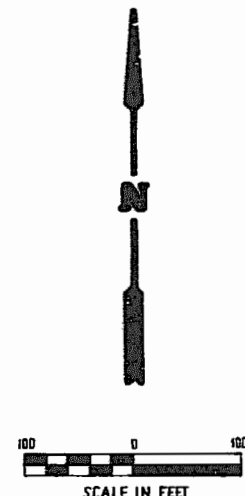
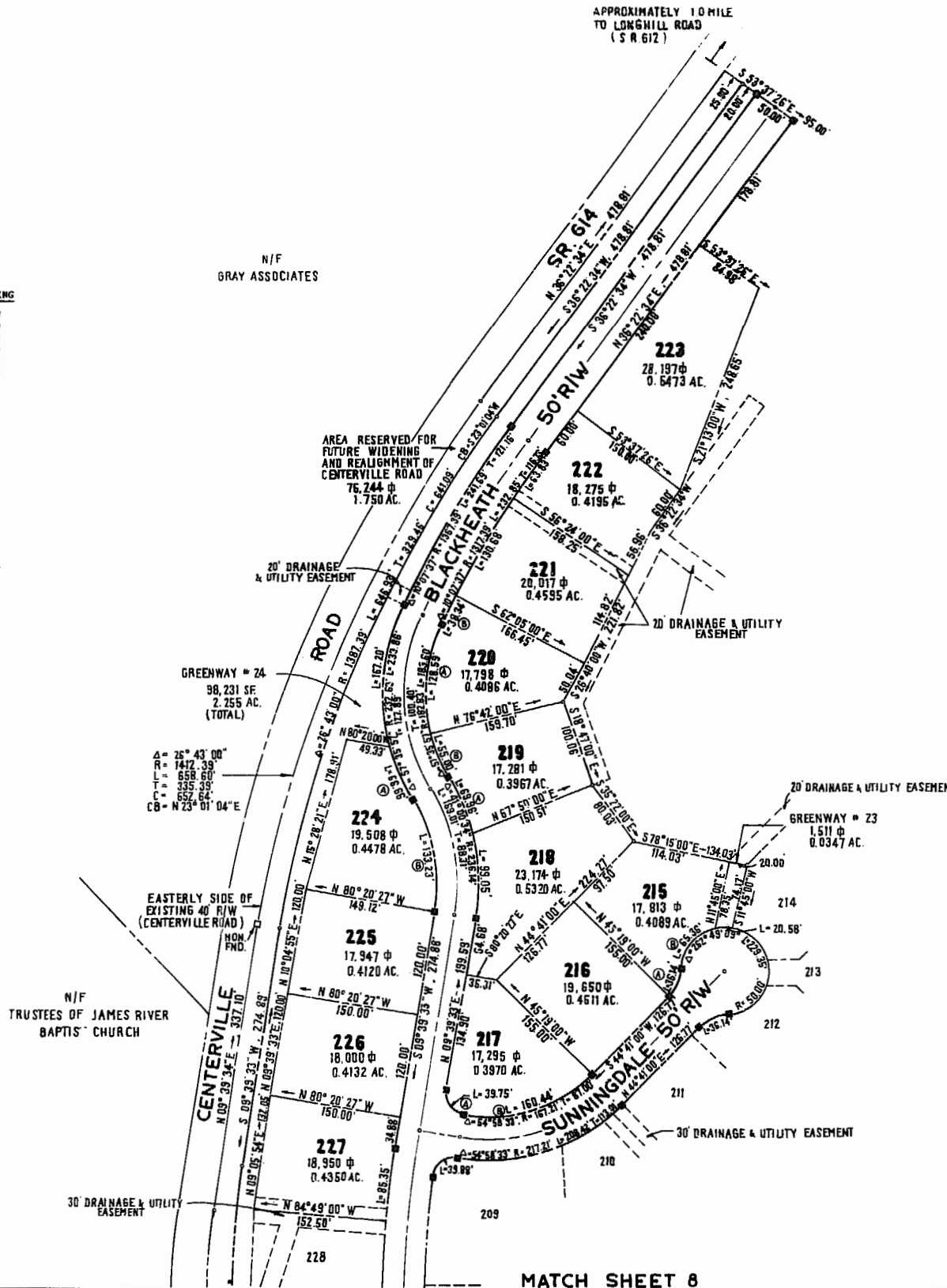


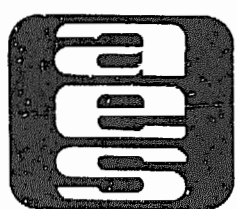
APPROXIMATELY 10 MILE
TO LONGHILL ROAD
(S R 612)

LOT CURVE DATA						
LOT	DELTA	RADIUS	LENGTH	TANGENT	CHORD	CHORD BEARING
215A	41°24'35"	50.00'	36.14'	18.90'	35.36'	S23°58'43"W
215B	74°53'53"	50.00'	65.36'	38.30'	60.81'	S40°43'22"W
217A	90°00'00"	25.31'	39.75'	25.31'	35.79'	N35°20'27"W
217B	54°58'33"	167.21'	160.44'	87.00'	154.36'	S72°10'17"W
218	26°02'00"	236.14'	99.05'	50.26'	98.33'	N02°21'27"W
219A	16°58'34"	236.14'	69.96'	35.24'	69.71'	N22°51'43"W
219B	17°15'21"	182.63'	55.00'	27.71'	54.80'	N06°43'20"W
220A	40°20'36"	182.63'	128.59'	67.09'	125.95'	N06°04'39"E
220B	01°40'03"	1317.39'	38.34'	19.17'	38.34'	N27°04'57"E
221	05°41'00"	1317.39'	130.68'	65.39'	130.62'	S5°50'00"E
222	02°46'34"	1317.39'	63.83'	31.92'	63.82'	S9°18'00"E
224A	16°25'05"	232.63'	66.66'	33.56'	66.43'	S4°08'28"E
224B	41°00'37"	156.14'	133.23'	69.61'	130.40'	S10°50'43"E
227	04°28'33"	1092.49'	85.35'	42.69'	85.32'	S07°25'17"W

GREENWAY						
LOT	DELTA	RADIUS	LENGTH	TANGENT	CHORD	CHORD BEARING
23	23°34'41"	50.00'	20.58'	10.44'	20.43'	S89°57'39"W



NO.	DATE	REVISION / COMMENT / NOTE	BY



AES, a professional corporation
 1761 Jamestown Road
 Williamsburg, Virginia, 23185
 804-253-0040
 Engineering, Planning, Surveying



PLAT OF
FORD'S COLONY
AT WILLIAMSBURG
 SECTION III
LOT 215 TO LOT 227
 POWHATAN DISTRICT JAMES CITY COUNTY VIRGINIA

Designed AES/LCA	Drawn BB
Scale 1"=100'	Date DEC. 1985
Project No 5652	
Drawing No 9 of 11	