

LOT CURVE DATA

LOT	DELTA	RADIUS	LENGTH	TANGENT	CHORD	CHORD BEARING
182	05°54'00"	1250.00'	128.72'	64.42'	128.66'	S20°00'00"W
183A	05°16'11"	1250.00'	115.15'	57.62'	115.11'	N14°24'40"W
183B	06°42'09"	25.00'	41.32'	27.14'	37.78'	N35°34'50"E
184	06°08'35"	700.00'	75.06'	37.56'	75.02'	N86°00'18"E
185	19°39'55"	700.00'	130.18'	65.27'	128.20'	S85°35'47"E
186	09°13'00"	700.00'	112.63'	56.44'	112.51'	S75°39'35"E
187	29°42'33"	225.00'	116.67'	59.64'	115.37'	S85°54'17"E
188	21°58'23"	225.00'	109.86'	56.05'	108.77'	N65°15'11"E
189A	05°10'55"	225.00'	12.50'	6.25'	12.49'	N49°40'28"E
189B	28°16'51"	75.00'	37.02'	18.89'	36.64'	N33°56'37"E
190	22°34'41"	75.00'	30.86'	15.65'	30.86'	N08°00'53"E
191	24°30'35"	75.00'	32.08'	16.29'	31.84'	N16°01'45"W
192	30°37'32"	50.00'	26.72'	13.69'	26.40'	N59°03'36"W
193	36°52'11"	50.00'	32.10'	16.67'	31.62'	S87°11'43"W
194	54°28'11"	50.00'	47.54'	25.74'	45.77'	S41°31'18"W
195A	40°58'48"	50.00'	35.76'	18.68'	35.00'	S06°12'24"E
195B	110°02'51"	50.00'	96.03'	71.47'	81.94'	S28°19'37"W
195C	25°35'58"	175.00'	78.19'	39.76'	77.54'	N83°50'59"W
195D	01°27'21"	750.00'	19.06'	9.53'	19.06'	N71°46'41"W
196A	10°26'10"	750.00'	136.61'	68.49'	136.42'	N77°43'26"W
196B	82°31'31"	25.00'	36.01'	21.93'	32.98'	N41°40'46"W
196C	02°22'24"	300.00'	12.43'	6.21'	12.43'	N00°46'12"E
197	26°00'21"	300.00'	136.17'	69.28'	135.00'	N14°57'34"E
198A	03°02'34"	300.00'	15.93'	7.97'	15.93'	N29°29'02"E
198B	59°30'46"	50.00'	60.66'	34.69'	57.01'	N65°45'41"E
198C	96°00'56"	50.00'	83.79'	55.55'	74.32'	N52°30'36"E
199	28°59'37"	50.00'	25.30'	12.93'	25.03'	N09°59'41"W
200	41°21'50"	50.00'	36.10'	18.80'	35.32'	N68°45'05"W
201	41°23'00"	50.00'	36.10'	18.80'	35.32'	S69°53'00"W
202	16°56'58"	350.00'	103.54'	52.15'	103.16'	S40°43'31"W
203	09°54'12"	350.00'	60.50'	30.32'	60.42'	S27°17'56"W
204	20°24'15"	350.00'	124.65'	62.99'	123.95'	S12°08'41"W
205A	02°21'31"	350.00'	14.41'	7.21'	14.41'	S00°45'45"W
205B	90°03'38"	25.00'	39.30'	25.03'	35.37'	S44°36'49"W
205C	06°42'38"	750.00'	87.84'	43.97'	87.79'	S58°17'19"W
206	88°08'00"	25.00'	38.46'	24.20'	34.78'	S53°00'00"W
207	03°14'24"	1042.49'	58.95'	29.48'	58.94'	N07°18'49"W
208	07°02'07"	1042.49'	128.00'	64.08'	127.92'	N02°10'33"W
209A	06°54'35"	1042.49'	125.72'	62.94'	125.65'	N04°47'48"W
209B	91°29'29"	25.00'	39.88'	25.62'	35.79'	N83°57'19"E
209C	32°26'07"	217.21'	122.96'	63.18'	121.32'	N83°26'32"E
210	18°15'38"	217.21'	69.23'	34.91'	68.93'	N58°05'41"E
211	06°16'52"	217.21'	16.23'	8.12'	16.23'	N46°49'26"E
212A	41°24'35"	50.00'	36.14'	18.90'	35.36'	N65°23'17"E
212B	65°15'12"	50.00'	56.94'	32.01'	53.92'	N53°27'59"E
213	34°54'55"	50.00'	30.47'	15.72'	30.00'	N03°12'56"E
214	64°10'28"	50.00'	56.00'	31.35'	53.12'	N46°09'46"W
218	06°05'00"	1092.49'	115.99'	58.05'	115.94'	S02°08'30"W
220	06°06'00"	1092.49'	116.31'	58.21'	116.26'	S03°57'00"E
229	01°56'00"	1092.49'	111.93'	56.00'	111.90'	S07°58'01"E
232	05°56'00"	1300.00'	111.93'	56.00'	111.90'	S11°24'00"E
233	05°04'00"	1300.00'	114.96'	57.52'	114.92'	S16°24'00"E
234	05°04'00"	1300.00'	114.96'	57.52'	114.92'	S21°28'00"E

LOT	DELTA	RADIUS	LENGTH	TANGENT	CHORD	CHORD BEARING
20	15°27'58"	75.00'	20.25'	10.18'	20.18'	N36°01'01"W
21	23°34'41"	50.00'	20.58'	10.44'	20.43'	N36°16'50"W

$\Delta = 18^{\circ}30'00"$
 $R = 552.95'$
 $L = 178.54'$
 $T = 80.05'$
 $C = 177.77'$
 $CB = N 00^{\circ}24'34"E$

$\Delta = 18^{\circ}30'00"$
 $R = 552.95'$
 $L = 178.54'$
 $T = 80.05'$
 $C = 177.77'$
 $CB = S 00^{\circ}24'34"W$

AREA RESERVED FOR
 FUTURE WIDENING
 AND REALIGNMENT OF
 CENTERVILLE ROAD.
 76.244 AC
 1.750 AC

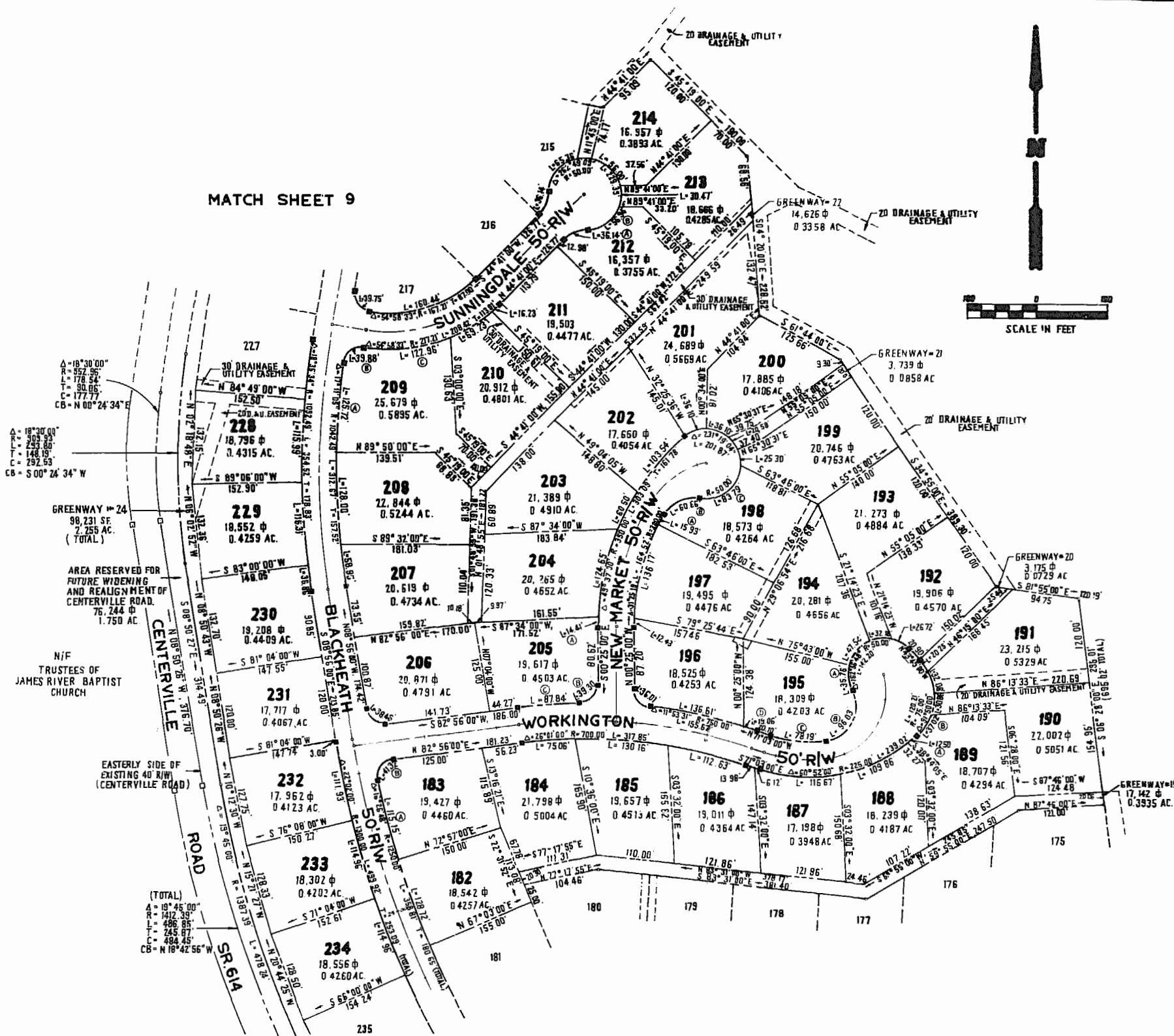
N/F
 TRUSTEES OF
 JAMES RIVER BAPTIST
 CHURCH

EASTERLY SIDE OF
 EXISTING 40' R/W
 (CENTERVILLE ROAD)

(TOTAL)
 $\Delta = 18^{\circ}45'00"$
 $R = 1412.39'$
 $L = 486.85'$
 $T = 245.87'$
 $C = 484.45'$
 $CB = N 18^{\circ}42'56"W$

MATCH SHEET 9

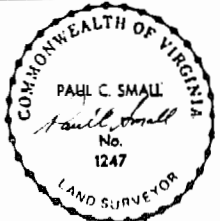
MATCH SHEET 7



NO.	DATE	REVISION / COMMENT / NOTE	BY



AES, a professional corporation
 1761 Jamestown Road
 Williamsburg, Virginia, 23185
 804-253-0040
 Engineering, Planning, Surveying



PLAT OF
FORD'S COLONY AT WILLIAMSBURG
 SECTION III
LOT 182 TO LOT 214
LOT 228 TO LOT 234
 POWHATAN DISTRICT JAMES CITY COUNTY VIRGINIA

Designed AES/LGA	Drawn BB
Scale 1"=100'	Date DEC. 1985
Project No. 5652	
Drawing No. 8 of 11	