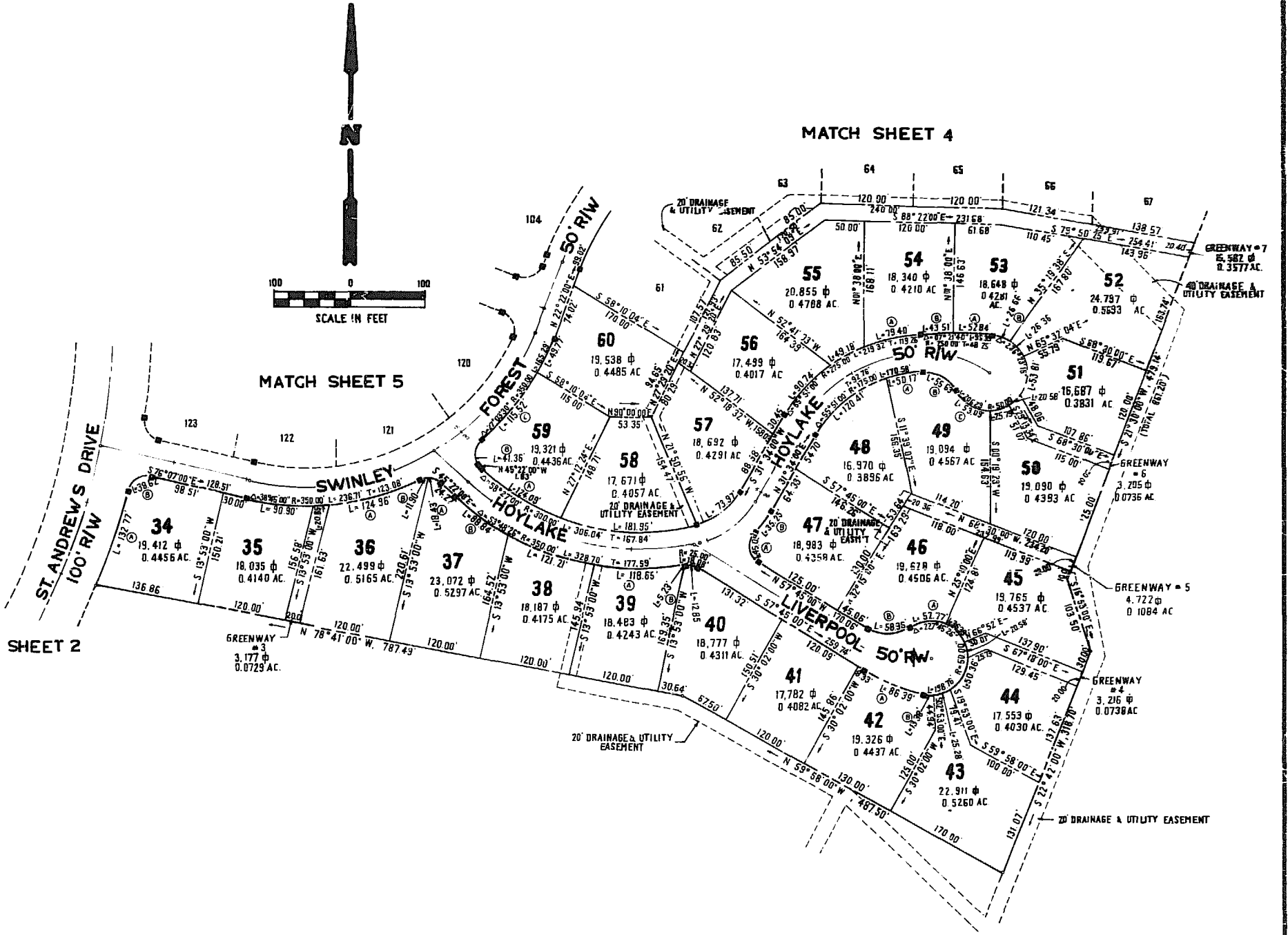


LOT CURVE DATA

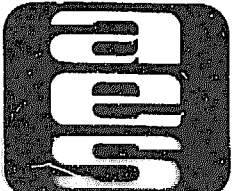
LOT	DELTA	RADIUS	LENGTH	TANGENT	CHORD	CHORD BEARING
34A	08°27'09"	900.00'	132.77'	65.51'	132.65'	S19°36'02"E
34E	86°20'32"	25.00'	38.42'	24.36'	34.09'	S59°37'44"E
35	14°52'49"	350.00'	90.80'	45.71'	90.64'	S83°31'24"E
36A	20°27'21"	350.00'	124.96'	63.15'	124.30'	S75°21'43"E
36B	27°15'40"	25.00'	11.90'	6.06'	11.78'	S78°45'52"E
37A	42°14'18"	25.00'	18.43'	9.66'	18.02'	S66°29'09"E
37B	14°42'33"	350.00'	88.84'	44.06'	88.60'	S52°38'17"E
38	19°50'32"	350.00'	121.21'	61.22'	120.61'	S69°49'49"E
39A	19°25'21"	350.00'	113.65'	59.90'	118.08'	S85°27'06"E
39B	11°59'11"	25.00'	5.23'	2.43'	5.22'	S86°29'10"E
40	29°26'15"	25.00'	12.85'	6.57'	12.70'	S72°30'07"E
42A	19°48'00"	250.00'	66.39'	43.43'	85.97'	S67°39'00"E
42B	15°20'00"	30.00'	13.38'	6.73'	13.34'	S85°13'00"E
43	28°58'00"	50.00'	25.28'	12.92'	25.01'	S73°48'00"E
44	57°42'19"	50.00'	50.36'	27.55'	48.26'	S29°17'51"E
45	41°42'00"	50.00'	36.39'	19.04'	35.59'	S43°59'00"W
46A	60°28'26"	50.00'	52.77'	29.14'	50.36'	S84°55'47"W
46B	67°33'26"	50.00'	58.96'	33.44'	55.60'	S88°28'17"W
47A	130°14'45"	25.00'	45.05'	31.57'	39.20'	S06°07'37"W
47B	13°35'45"	144.99'	35.25'	17.71'	35.16'	S38°31'53"W
48	39°25'25"	175.00'	120.41'	62.70'	118.05'	S51°16'42"E
49A	16°25'35"	175.00'	50.17'	25.26'	50.00'	S79°12'13"E
49B	63°44'56"	50.00'	55.63'	31.09'	52.81'	S60°42'32"E
49C	80°50'33"	50.00'	53.03'	29.36'	50.64'	S59°15'21"E
50	29°29'59"	50.00'	25.79'	13.19'	25.50'	S75°32'54"E
51	61°39'00"	50.00'	53.81'	29.84'	51.25'	S06°21'54"E
52	30°12'26"	50.00'	26.36'	13.49'	26.06'	S39°34'09"W
53A	04°02'13"	750.00'	52.84'	26.43'	52.82'	S87°14'26"W
53B	30°32'58"	50.00'	26.46'	13.46'	26.35'	S69°56'51"W
54A	20°13'12"	225.00'	79.40'	40.12'	78.99'	S77°18'24"W
54B	03°19'27"	750.00'	43.51'	21.76'	43.51'	S89°04'44"W
55	12°31'24"	225.00'	69.18'	24.69'	69.08'	S60°56'06"W
56	23°06'24"	225.00'	96.74'	46.00'	90.13'	S43°07'12"W
57	44°37'00"	50.99'	73.97'	38.98'	72.12'	S53°32'30"W
58	36°44'58"	300.00'	181.95'	93.87'	179.17'	S86°26'31"E
59A	23°42'02"	300.00'	124.09'	62.55'	123.21'	S57°13'01"W
59B	94°47'34"	25.00'	41.36'	27.18'	36.80'	S02°01'47"E
59C	18°54'41"	350.00'	115.52'	58.29'	115.00'	S39°58'13"E
60	08°08'53"	350.00'	49.77'	24.91'	49.73'	S26°26'26"E

GREENWAY

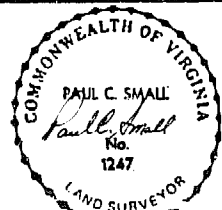
LOT	DELTA	RADIUS	LENGTH	TANGENT	CHORD	CHORD BEARING
3	03°34'48"	350.00'	20.85'	10.43'	20.85'	N89°17'47"E
4	23°34'41"	50.00'	20.58'	10.44'	20.43'	N11°20'39"W
6	23°34'41"	50.00'	20.58'	10.44'	20.43'	S48°59'05"E



NO.	DATE	REVISION / COMMENT / NOTE	BY



AES, a professional corporation
 1761 Jamestown Road
 Williamsburg, Virginia, 23185
 804-253-6040
 Engineering, Planning, Surveying



PLAT OF
FORD'S COLONY
AT WILLIAMSBURG
SECTION III
LOT 34 TO LOT 60
 POWHATAN DISTRICT JAMES CITY COUNTY VIRGINIA

Designed AES/LCA	Drawn SB
Scale 1"=100'	Date DEC. 1995
Project No. 5652	
Drawing No. 3 of 11	