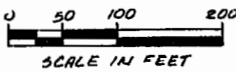
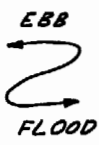


**NOTE**

A 10' MIN. WIDTH EASEMENT FOR FORCE MAIN & GRINDER PUMP ACCESS BY J.C.S.A. WILL BE PROVIDED ON EACH LOT FROM VDH & T R/W TO GRINDER PUMP. ACTUAL LOCATION OF EASEMENTS SHALL BE DETERMINED BY GRINDER PUMP & FORCE MAIN LOCATIONS.

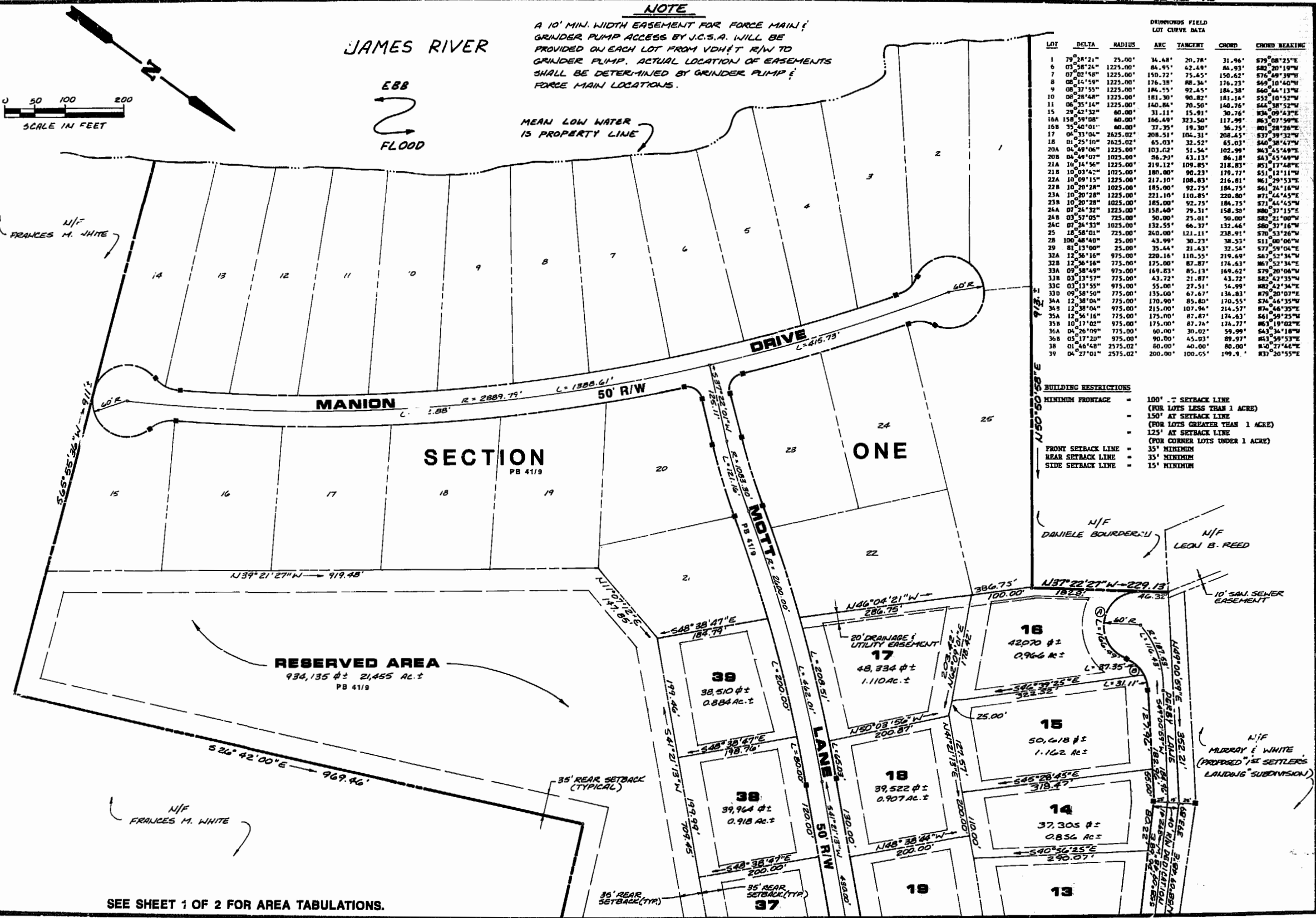


JAMES RIVER



MEAN LOW WATER IS PROPERTY LINE

N/F FRANCES M. WHITE



LOT	DELTA	RADIUS	ARC	TANGENT	CHORD	CHORD BEARING
1	79°28'21"	75.00'	34.48'	20.78'	31.96'	S79°08'25"E
6	05°58'21"	1225.00'	84.95'	42.49'	84.93'	S82°20'19"W
7	07°02'58"	1225.00'	150.72'	75.35'	150.42'	S74°48'39"W
8	08°16'59"	1225.00'	176.38'	88.34'	176.23'	S69°10'40"W
9	08°37'55"	1225.00'	184.55'	92.45'	184.38'	S60°44'13"W
10	08°28'48"	1225.00'	181.30'	90.82'	181.14'	S52°10'52"W
11	06°35'14"	1225.00'	140.84'	70.50'	140.76'	S44°38'52"W
15	29°42'52"	60.00'	31.11'	15.91'	30.76'	N34°09'43"E
16A	15°59'08"	48.00'	16.48'	8.24'	16.48'	N51°07'59"E
16B	35°46'01"	48.00'	37.25'	19.30'	36.75'	N61°28'23"E
17	04°33'04"	2625.02'	208.51'	104.31'	208.45'	S37°39'32"W
18	01°25'10"	2625.02'	65.03'	32.52'	65.03'	S40°38'47"W
20A	04°49'06"	1225.00'	103.02'	51.54'	102.99'	N43°45'49"E
20B	04°49'07"	1025.00'	96.79'	48.39'	96.18'	N43°45'49"E
21A	10°44'56"	1225.00'	219.12'	109.85'	218.83'	N51°17'46"E
21B	10°03'44"	1025.00'	180.00'	90.23'	179.77'	S51°12'11"W
22A	10°09'15"	1225.00'	212.10'	106.03'	211.61'	N61°29'53"E
22B	10°20'28"	1025.00'	185.00'	92.75'	184.75'	S61°26'16"W
23A	10°20'28"	1225.00'	221.10'	110.85'	220.80'	N71°44'45"E
23B	10°20'28"	1025.00'	185.00'	92.75'	184.75'	S71°46'45"W
24A	07°24'32"	1225.00'	158.40'	79.31'	158.30'	N80°37'15"E
24B	03°57'05"	725.00'	90.00'	45.01'	90.00'	S82°21'00"W
24C	07°24'33"	1025.00'	132.55'	66.27'	132.46'	S80°39'18"W
25	18°58'01"	725.00'	240.00'	121.11'	238.91'	S70°53'26"W
28	100°48'40"	25.00'	43.99'	30.23'	38.53'	S11°00'06"W
29	81°13'00"	25.00'	35.44'	21.43'	32.54'	S77°59'04"E
32A	12°56'16"	975.00'	220.16'	110.55'	219.69'	S67°52'34"W
32B	12°56'16"	725.00'	175.00'	87.87'	174.63'	N67°52'34"E
33A	09°58'49"	975.00'	169.83'	85.13'	169.62'	S79°20'06"W
33B	03°13'55"	725.00'	43.72'	21.87'	43.72'	S82°42'33"W
33C	03°13'55"	975.00'	55.00'	27.51'	54.99'	N82°42'34"E
33D	09°58'50"	725.00'	155.00'	67.67'	154.83'	N79°20'07"E
34A	12°38'04"	725.00'	170.90'	85.80'	170.55'	S74°46'35"W
34B	12°38'04"	975.00'	215.00'	107.96'	214.57'	N74°46'35"E
35A	12°56'16"	725.00'	175.00'	87.87'	174.63'	S61°59'25"W
35B	10°17'02"	975.00'	175.00'	87.74'	174.77'	N63°19'02"E
36A	04°19'09"	725.00'	60.00'	30.02'	59.99'	S45°34'18"W
36B	05°17'20"	975.00'	90.00'	45.03'	89.97'	N53°59'53"E
38	01°46'48"	2575.02'	60.00'	40.00'	60.00'	N40°27'44"E
39	04°27'01"	2575.02'	200.00'	100.05'	199.9'	N37°20'55"E

**BUILDING RESTRICTIONS**

- MINIMUM FRONTAGE = 100' - 7' SETBACK LINE (FOR LOTS LESS THAN 1 ACRE)
- 150' AT SETBACK LINE (FOR LOTS GREATER THAN 1 ACRE)
- 125' AT SETBACK LINE (FOR CORNER LOTS UNDER 1 ACRE)
- FRONT SETBACK LINE = 35' MINIMUM
- REAR SETBACK LINE = 35' MINIMUM
- SIDE SETBACK LINE = 15' MINIMUM



**AES**, a professional corporation  
 1761 Jamestown Road, Williamsburg, Va. 23185  
 804-253-0040  
 Architecture, Engineering, Surveying, Planning

**PLAT OF DRUMMONDS FIELD SECTION 2**

**OWNER / DEVELOPER:**  
 DRUMMONDS FIELD, LIMITED

BERKELEY DISTRICT JAMES CITY COUNTY VIRGINIA



12:17 p.m.

Recorded 19th day of November, 1985

D.B. No. 288 : pages 50

Walter S. [Name] Clerk

No.	DATE	REVISION / COMMENT / NOTE	BY

Designed	Drawn
JNB	RMB/AVT
Scale 1"=100'	Date 8/27/85
Project No. 5179	Drawing No. 2 OF 2

