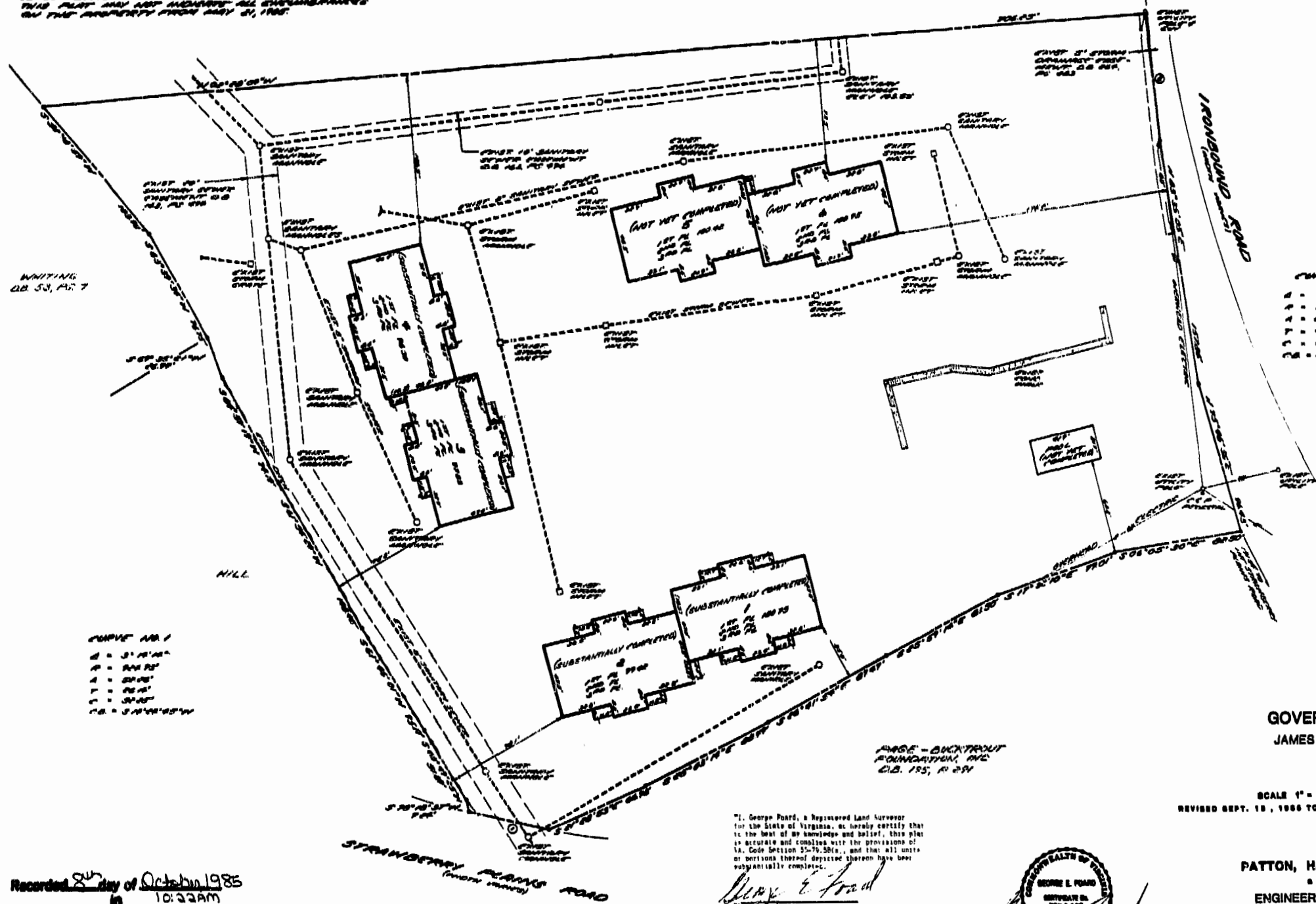
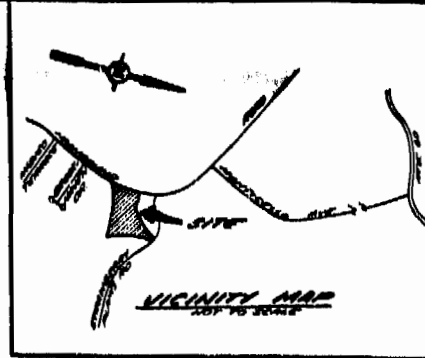


OWNER: GOVERNOR'S SQUARE, INC.
C.B. 283, PG. 150

DATE: JULY 10, 1985

THIS REPORT WAS PREPARED BY LAND SURVEYOR
PATTON, HARRIS, RUST & ASSOCIATES
ON BEHALF OF THE ABOVE NAMED PARTY.
THIS PLAN AND ANY IMPROVEMENTS THEREON
SHALL BE SUBJECT TO ALL REGULATIONS
OF THE CITY OF BRIDGEWATER, VIRGINIA.

N/T CORNS
C.B. 37, PG. 909



- CURVE NO. 1
- 1 = 110.00'
 - 2 = 110.00'
 - 3 = 110.00'
 - 4 = 110.00'
 - 5 = 110.00'
 - 6 = 110.00'

- CURVE NO. 2
- 1 = 110.00'
 - 2 = 110.00'
 - 3 = 110.00'
 - 4 = 110.00'
 - 5 = 110.00'
 - 6 = 110.00'

TOTAL SITE AREA = 5.7046 AC

IMPROVEMENT SURVEY
ON THE LAND OF
GOVERNOR'S SQUARE INC.
JAMES CITY COUNTY, VIRGINIA

SCALE 1" = 50' DATE: JULY 10, 1985
REVISED SEPT. 18, 1986 TO SHOW UNITS 1 THROUGH 4 SUBSTANTIALLY COMPLETED

PREPARED BY
PATTON, HARRIS, RUST & ASSOCIATES
a professional corporation
ENGINEERS • SURVEYORS • PLANNERS
LANDSCAPE ARCHITECTS
BRIDGEWATER, VIRGINIA

"I, George Poard, a Registered Land Surveyor
for the State of Virginia, do hereby certify that
to the best of my knowledge and belief, this plan
is accurate and complies with the provisions of
Va. Code Section 55-75, 58(c), and that all units
or portions thereof depicted thereon have been
substantially completed.

George Poard
George Poard
Cert. No. 759 & 116



See attached plan "Sheet C-1, Dimensional Layout"
for Governor's Square project for the intended
location and dimensions of parking and roadway
improvements not yet substantially completed.

Recorded 8th day of October 1985
in 10:23AM
B. B. No. 283 page 150
Walter S. Wood Clerk



Exhibit C