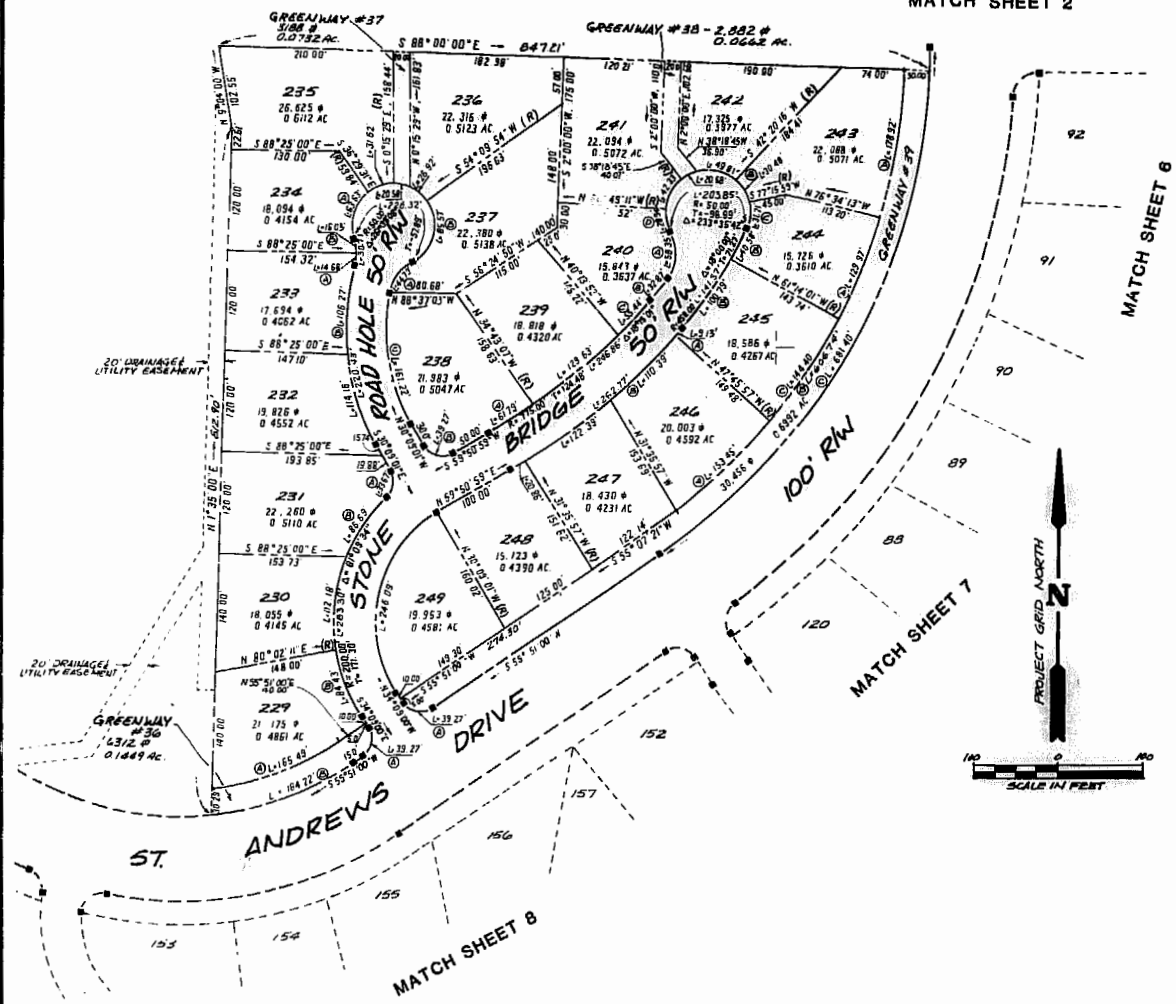


MATCH SHEET 2



LOT CURVE DATA

LOT	DELTA	RADIUS	LENGTH	TANGENT	CHORD	CHORD BEARING
229A	27°09'00"	345.00'	165.49'	84.37'	163.91'	S69°35'30"W
229B	24°11'12"	200.00'	86.43'	42.85'	83.80'	S22°03'25"E
230	32°08'18"	200.00'	112.18'	57.61'	110.72'	S06°06'20"W
231A	71°09'37"	25.00'	86.69'	44.04'	86.02'	S08°25'48"W
231B	24°00'08"	200.00'	31.67'	19.94'	31.18'	S08°25'48"W
232	23°47'04"	275.00'	114.16'	57.91'	113.34'	S18°15'29"E
233A	16°49'13"	50.00'	14.68'	7.39'	14.63'	S07°21'41"W
233B	22°08'25"	275.00'	106.27'	53.80'	105.61'	S04°42'15"W
234A	72°55'03"	50.00'	63.63'	36.94'	59.42'	S17°02'57"W
234B	18°21'49"	50.00'	16.03'	8.08'	15.96'	S01°13'40"E
235	38°14'02"	50.00'	33.67'	13.79'	31.10'	S71°37'30"E
236	30°50'42"	50.00'	26.92'	13.79'	26.59'	S51°15'27"W
237A	51°19'10"	50.00'	44.79'	24.02'	43.31'	S18°15'29"E
237B	98°03'27"	50.00'	85.57'	57.58'	75.30'	S13°01'38"E
238A	04°34'06"	775.00'	61.79'	30.91'	61.78'	S57°33'56"W
238B	90°00'00"	25.00'	39.27'	25.00'	35.36'	N75°09'01"W
238C	41°03'17"	225.00'	161.22'	84.25'	157.80'	N09°37'32"W
239	09°55'00"	775.00'	129.63'	64.97'	129.48'	S50°29'23"W
240A	66°52'04"	50.00'	58.35'	33.01'	55.10'	S03°27'26"W
240B	04°42'32"	400.00'	32.87'	16.45'	32.87'	S39°16'43"W
240C	04°05'54"	775.00'	55.44'	27.73'	55.42'	S43°38'56"W
240D	33°09'26"	50.00'	28.94'	14.89'	28.53'	S13°23'33"E
241	48°30'26"	50.00'	42.33'	22.53'	41.08'	S27°26'02"W
242	57°04'19"	50.00'	49.81'	27.19'	47.77'	N76°11'54"W
243A	14°45'00"	695.00'	178.92'	89.96'	178.42'	S09°22'30"W
243B	34°55'43"	50.00'	30.48'	15.73'	30.01'	S30°11'53"W
244A	10°42'56"	695.00'	129.97'	65.18'	129.79'	S22°06'27"W
244B	05°10'00"	450.00'	40.58'	20.30'	40.57'	N26°10'59"E
244C	36°20'00"	50.00'	31.71'	16.41'	31.18'	N05°25'59"E
245A	00°38'04"	825.00'	9.13'	4.57'	9.13'	N41°55'01"E
245B	12°50'00"	450.00'	100.79'	50.61'	100.58'	N35°10'59"E
245C	11°54'16"	695.00'	144.40'	72.46'	144.14'	S33°25'01"W
246A	12°39'01"	695.00'	153.45'	77.04'	153.14'	S45°41'39"W
246B	07°40'00"	825.00'	110.39'	55.28'	110.31'	N46°04'03"E
247	08°30'00"	825.00'	122.39'	61.31'	122.28'	N54°09'03"E
248	01°26'56"	825.00'	20.86'	10.43'	20.86'	N59°07'31"E
249	94°00'00"	150.00'	246.09'	160.86'	219.41'	N12°50'59"E

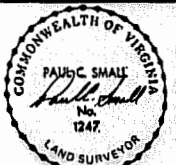
GREENWAY CURVE DATA

NO.	DELTA	RADIUS	LENGTH	TANGENT	CHORD	CHORD BEARING
36A	90°00'00"	25.00'	39.27'	25.00'	35.36'	S10°50'59"W
36B	28°08'50"	375.00'	184.22'	94.01'	182.38'	S69°35'25"W
37	23°34'41"	50.00'	20.58'	10.44'	20.43'	N78°28'09"W
38	23°34'41"	50.00'	20.58'	10.44'	20.43'	S63°28'13"W
39A	90°00'00"	25.00'	39.27'	25.00'	35.36'	N79°09'01"W
39B	50°01'09"	695.00'	606.74'	324.23'	587.65'	N27°00'35"E
39C	53°51'00"	725.00'	681.40'	368.21'	656.60'	S28°55'30"W

NO.	DATE	REVISION / COMMENT / NOTE	BY



AES, a professional corporation
 1761 Jamestown Road
 Williamsburg, Virginia, 23185
 804-263-0040
 Engineering, Planning, Surveying



PLAT OF
FORD'S COLONY
AT WILLIAMSBURG
SECTION II
LOT 229 TO LOT 249
 POWHATAN DISTRICT JAMES CITY COUNTY VIRGINIA

Designed AES/LCA	Drawn ALL
Scale 1"=100'	Date FEB., 1988
Project No. 5652	
Drawing No. 11 of 13	

