

LOT CURVE DATA

GREENWAY CURVE DATA

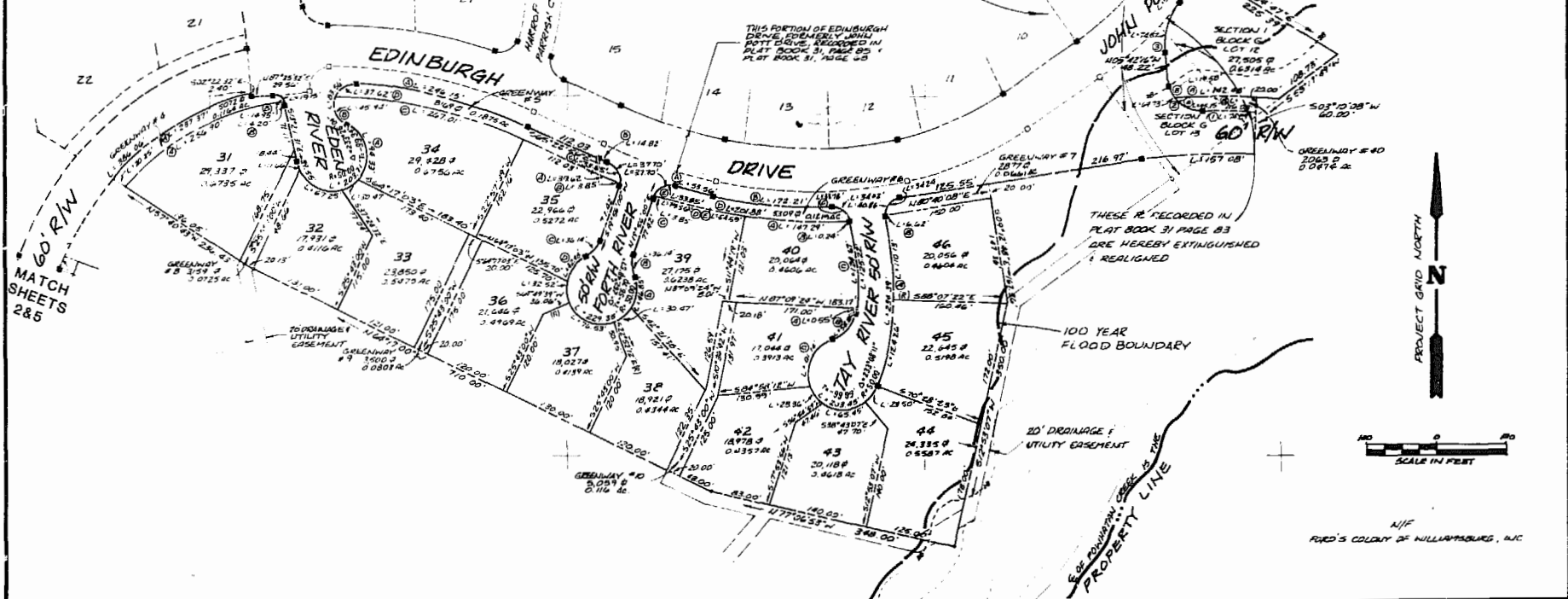
LOT	DELTA	RADIUS	LENGTH	TANGENT	CHORD	CHORD BEARING
31A	39°5'	369.09'	256.90'	133.90'	251.74'	N61°26'09"E
31B	09°36'	25.00'	4.20'	2.10'	4.19'	S17°15'42"E
32	77°03'49"	50.00'	67.25'	39.82'	62.30'	S65°21'10"E
33	34°54'44"	50.00'	30.47'	15.72'	30.00'	N58°39'34"E
34A	108°03'28"	50.00'	94.33'	68.93'	80.99'	N12°00'32"W
34B	87°44'40"	30.00'	45.94'	28.84'	41.58'	N23°00'56"W
34C	24°32'14"	623.49'	267.01'	135.59'	264.98'	S79°39'03"E
35A	02°51'32"	794.01'	39.62'	19.81'	39.61'	S66°48'42"E
35B	08°49'44"	25.00'	3.85'	1.93'	3.85'	S15°31'06"W
35C	41°24'35"	50.00'	36.14'	18.90'	35.36'	S40°38'17"W
35D	49°15'05"	50.00'	42.98'	22.92'	41.67'	S36°43'02"W
36	37°15'50"	50.00'	32.52'	16.86'	31.99'	S06°32'26"E
36B	87°44'40"	30.00'	45.94'	28.84'	41.58'	N23°00'56"W
38	34°54'44"	50.00'	30.47'	15.72'	30.00'	N58°39'34"E
39A	53°41'28"	50.00'	46.85'	25.31'	45.16'	N05°22'04"E
39C	41°24'35"	50.00'	36.14'	18.90'	35.36'	N00°36'18"W
39C	08°49'44"	25.00'	3.85'	1.93'	3.85'	N24°20'52"E
39D	05°43'36"	794.01'	39.62'	19.81'	39.61'	S74°45'21"E
39E	04°38'36"	375.00'	54.59'	27.31'	54.57'	S79°56'27"E
40A	12°31'45"	673.57'	147.29'	73.94'	147.00'	S68°31'38"E
40B	00°32'07"	25.00'	0.23'	0.12'	0.23'	S15°01'17"E
40C	19°02'56"	375.00'	124.68'	62.92'	124.10'	S05°13'45"E
41A	00°05'00"	375.00'	0.55'	0.27'	0.55'	S04°20'13"W
41B	67°22'45"	50.00'	58.80'	33.33'	55.47'	S38°04'09"W
41C	92°58'38"	50.00'	81.14'	52.67'	72.52'	S25°16'12"W
42	32°30'00"	50.00'	28.36'	14.57'	27.98'	S37°28'07"E
43	75°00'00"	50.00'	65.45'	38.37'	60.80'	S88°46'54"E
44	32°39'10"	50.00'	28.50'	14.65'	28.11'	N36°31'18"E
45	18°45'05"	425.00'	124.26'	62.57'	123.81'	N10°15'11"E
46A	14°50'49"	425.00'	110.13'	55.38'	109.82'	N05°32'46"W
46B	15°10'32"	25.00'	6.62'	3.33'	6.60'	N05°22'55"W
12A	10°12'16"	800.00'	142.48'	71.43'	142.29'	S89°07'27"W
12B	22°26'12"	50.00'	19.58'	9.92'	19.45'	N29°22'37"W

GREENWAY NO.	DELTA	RADIUS	LENGTH	TANGENT	CHORD	CHORD BEARING
4A	31°57'14"	389.09'	237.37'	122.51'	233.71'	N58°29'51"E
4B	34°16'16"	25.00'	14.95'	7.71'	14.73'	S39°12'18"E
5A	21°55'01"	643.49'	246.15'	124.60'	244.65'	S76°20'26"E
5B	01°05'48"	774.01'	14.82'	7.41'	14.82'	S65°55'50"E
5C	77°35'00"	25.00'	33.85'	20.01'	31.33'	S27°41'14"E
5D	71°50'40"	30.00'	37.62'	21.73'	35.20'	N56°46'44"E
6A	03°27'53"	774.01'	53.56'	26.79'	53.55'	S75°29'13"E
6B	15°06'48"	653.57'	172.21'	86.61'	171.71'	S85°10'03"E
6C	77°05'37"	25.00'	33.78'	20.04'	31.27'	S54°00'08"E
6D	17°10'22"	673.57'	201.88'	101.70'	201.13'	N86°12'20"W
6E	77°35'00"	25.00'	33.85'	20.10'	31.33'	N67°33'14"E
7	78°27'17"	25.00'	34.24'	20.41'	31.62'	N41°26'15"E
8	13°21'54"	50.00'	11.66'	5.86'	11.64'	S20°08'18"E
40A	51°44'12"	50.00'	45.15'	24.25'	43.63'	N66°27'49"W
41B	02°18'49"	800.00'	116.08'	58.14'	115.98'	N89°00'44"E

R/W CURVE DATA

NO.	DELTA	RADIUS	LENGTH	TANGENT	CHORD	CHORD BEARING
1	05°30'03"	780.00'	74.89'	37.47'	74.86'	N89°34'53"W
2	74°10'24"	50.00'	64.73'	37.80'	60.30'	N55°14'43"W
3	42°43'28"	100.00'	74.57'	39.11'	72.65'	N15°39'28"E
4	06°15'42"	505.33'	55.23'	27.64'	55.20'	N33°53'21"E

MATCH SHEET 3



NO.	DATE	REVISION / COMMENT / NOTE	BY



AES, a professional corporation
 1761 Jamestown Road
 Williamsburg, Virginia, 23185
 804-253-0040
 Engineering, Planning, Surveying



PLAT OF FORD'S COLONY AT WILLIAMSBURG SECTION II LOT 31 TO LOT 46
 POWHATAN DISTRICT JAMES CITY COUNTY VIRGINIA

Designed AES/LCA	Drawn ALL
Scale 1"=100'	Date FEB., 1985
Project No. 5652	Drawing No. 4 of 13