

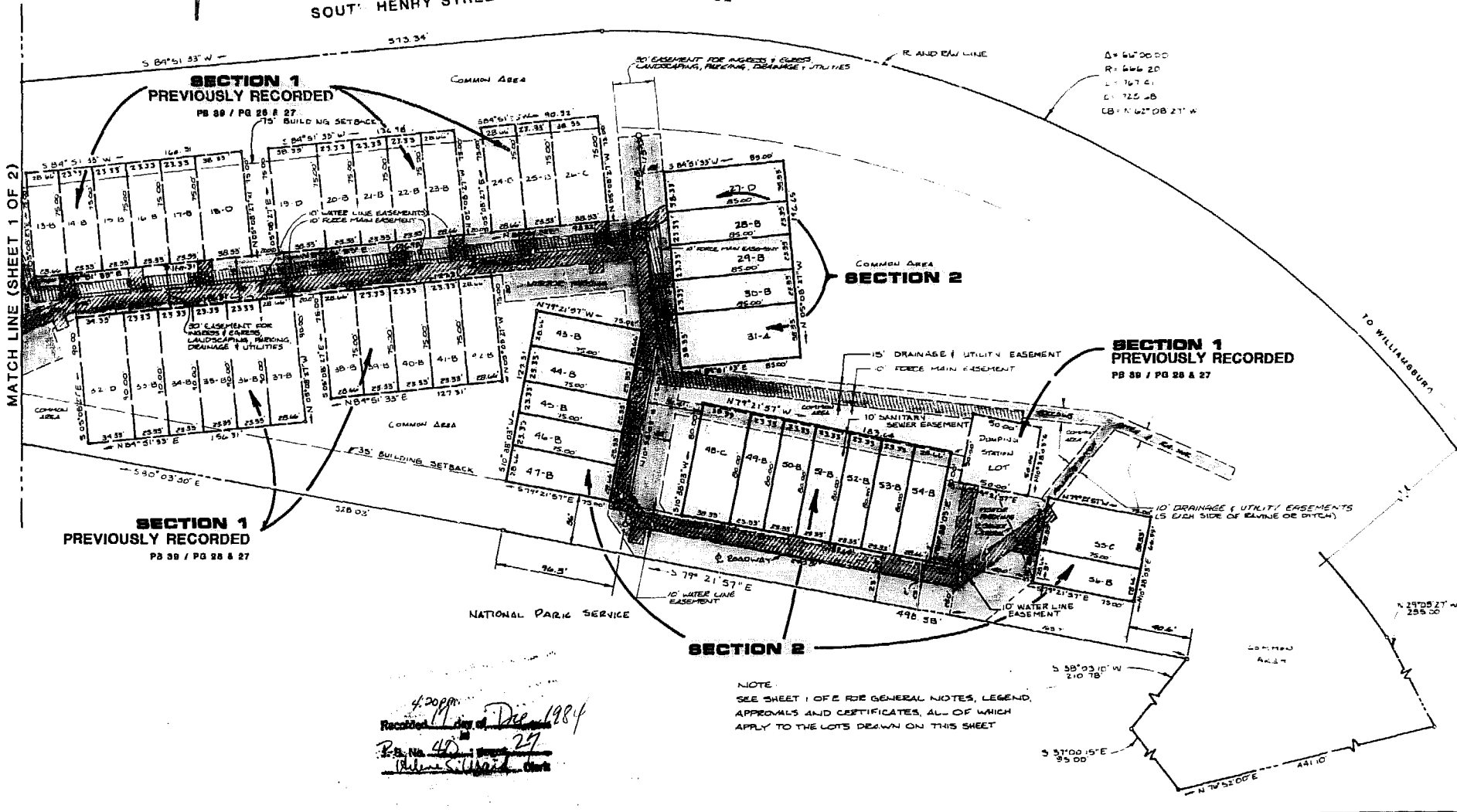
THE OAKS-SECTION 1 WAS RECORDED IN PLAT BOOK 39 AT PAGES 26 AND 27 IN THE CLERK'S OFFICE OF THE CIRCUIT COURT FOR THE CITY OF WILLIAMSBURG. THIS PLAT SIMPLY ADDS THE REMAINING LOTS WHICH WERE UNDER CONSTRUCTION AT THAT TIME. ALL PROVISIONS SET FORTH FOR LOTS IN SECTION 1 APPLY TO LOTS IN SECTION 2.

SECTION 2 CONSISTS OF LOTS 27 THRU 31 AND LOTS 43 THRU 56... A TOTAL OF 19 LOTS.

SECTION 1 CONSISTS OF LOTS 1 THRU 26 AND LOTS 52 THRU 62... A TOTAL OF 37 LOTS.

SOUTH HENRY STREET

S.R. 132



Δ = 60'00"00  
 R = 600'20"  
 L = 167'01"  
 C = 125'00"  
 CB = N 62°08'21" W

**SECTION 1**  
 PREVIOUSLY RECORDED  
 PB 39 / PG 26 & 27

**SECTION 1**  
 PREVIOUSLY RECORDED  
 PB 39 / PG 26 & 27

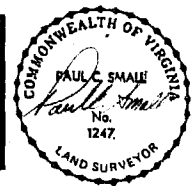
NOTE  
 SEE SHEET 1 OF 2 FOR GENERAL NOTES, LEGEND, APPROVALS AND CERTIFICATES, ALL OF WHICH APPLY TO THE LOTS DRAWN ON THIS SHEET

42099  
 Recorded Dec 1984  
 P.B. No. 40  
 27  
 (Signature)



**AES**, a professional corporation  
 1761 Jamestown Road, Williamsburg, Va. 23185  
 804-263-0040  
 Architecture, Engineering, Surveying, Planning

**THE OAKS SECTION 2**  
**SHELLS, INC. - OWNER/DEVELOPER**  
**CITY OF WILLIAMSBURG VIRGINIA**  
 1" = 50'  
**JANUARY, 1984**



DATE	REVISION / COMMENT / NOTE	BY
3/19/84	GENERAL REVISIONS	PS
2/14/84	REVISED PER CITY OF WILLIAMSBURG REVIEW COMMENTS	PS
1/14/84	PLAT REVISED FOR RECORDING IN CITY OF WILLIAMSBURG	PS

Designed	Drawn
LDE	DAC
Scale	Date
1" = 50'	JAN 1984
Project No.	
AES 10 802	
ESC 10 802	
Drawing No.	2 of 2

