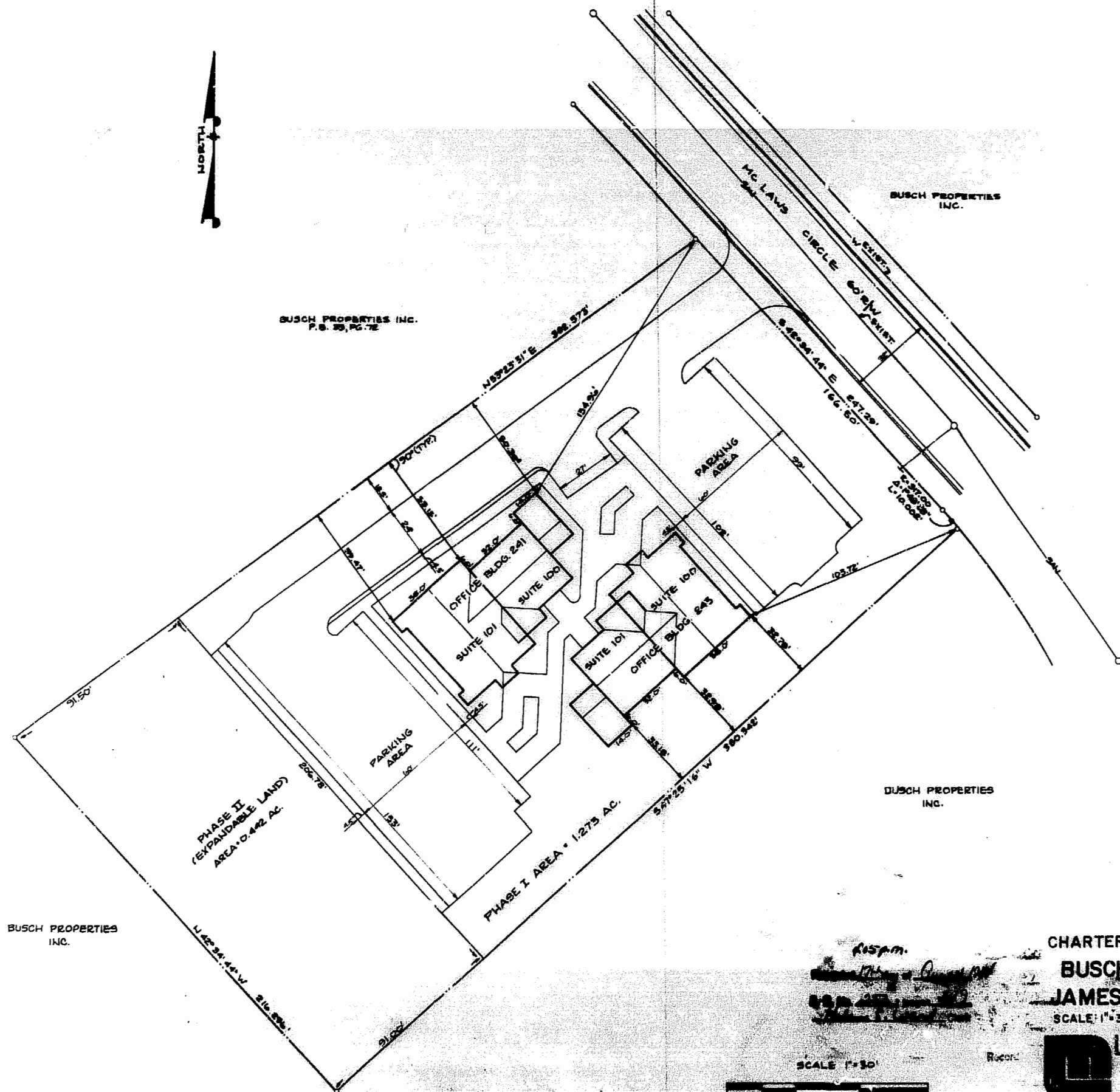


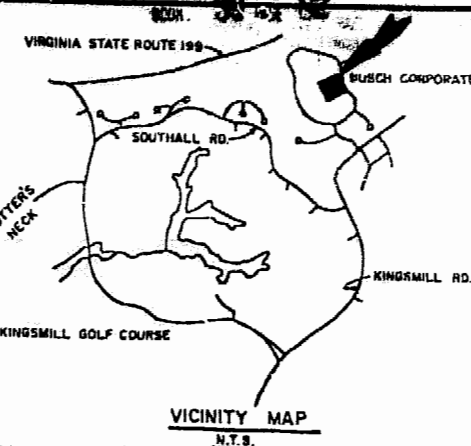


BUSCH PROPERTIES INC.  
P.S. 29, PG. 7E



BUSCH PROPERTIES  
INC.

BUSCH PROPERTIES  
INC.



THIS CONDOMINIUM PLAT OF PROPERTY  
KNOWN AS CHARTERTOWNE PROFESSIONAL CENTER,  
JAMES CITY COUNTY, VIRGINIA, AS THE SAME  
APPEARS ON THIS PLAT IS WITH FREE CONSENT  
AND IN ACCORDANCE WITH THE DESIRES OF THE  
UNDERSIGNED OWNER.

BY: Steve D. Wolf

ATTEST: Juan H. Carter

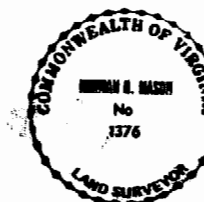
My Commission expires 3-25-95

Approved: Alfred J. Mason  
Agent of Governing Body

SURVEYOR'S CERTIFICATE

I HEREBY CERTIFY THAT THIS IS A CORRECT AND  
ACCURATE PLAT, THAT THIS PLAT IS IN COMPLIANCE  
WITH SUB-SECTION 55-79.5B (a) AND (c)  
VA. CODE ANNO. (1980 CUM. SUP.)

Alfred J. Mason 7/12/84  
DATE



**EXHIBIT A**  
**PHASE I**

CHARTERTOWNE PROFESSIONAL CENTER  
BUSCH CORPORATE CENTER  
JAMES CITY COUNTY, VIRGINIA

SCALE: 1"=30'

DATE: 7-9-84

**Langley and McDonald**

ENGINEERS - PLANNERS - SURVEYORS

VIRGINIA BEACH - WILLIAMSBURG, VIRGINIA

SHEET 1 OF 5

REV 8/1/84

DRW NO 1428 W

