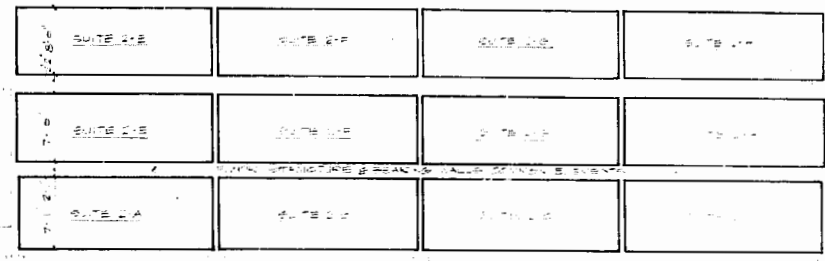


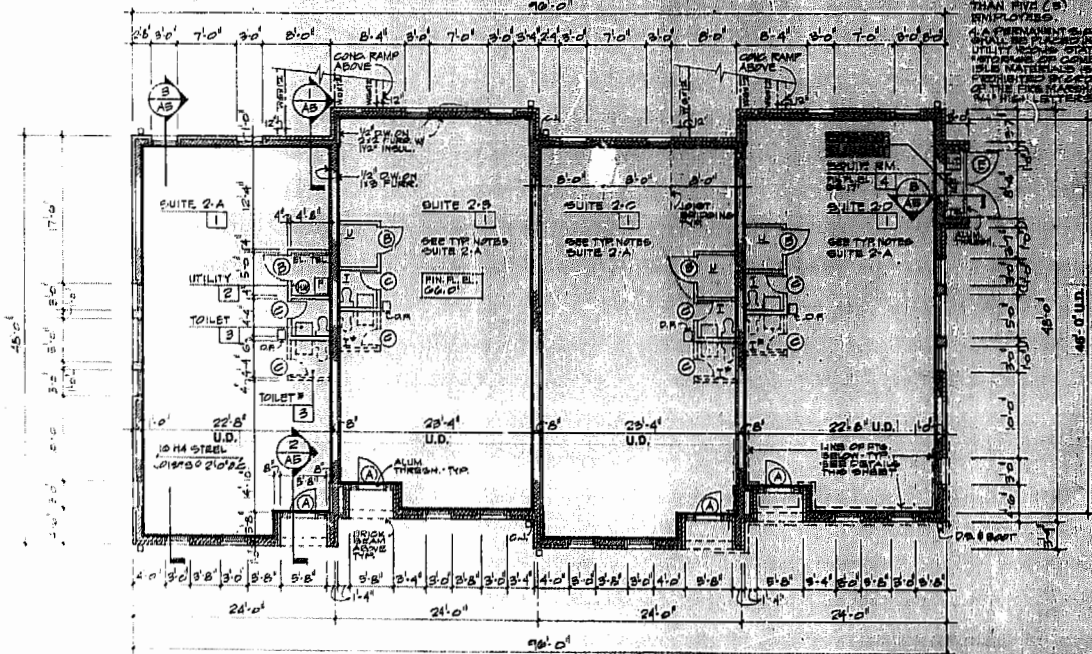
1 SECOND FLOOR PLAN
SCALE: 1/8" = 1'-0"

NOTE:
WALLS SHOWN OUTSIDE OF
UNIT DIMENSIONS ARE
COMMON ELEMENTS

PLAN NOTES:
1. ALL GIRD WALLS TO BE FULL HEIGHT AND INSULATED AT 9" BATH INSUL.
2. INTERIOR GIRD WALLS TO RECEIVE 1/2" D.W. ON 1/2" FURRING MATERIAL ON GIRD WALLS TO RECEIVE 1/2" D.W. ON 2" FURRING MATERIAL WITH INSUL. SEE FINISH SCHEDULE.
3. SW INDICATES OPTIONAL SECOND TOILET. REQUIRED FOR MORE THAN 10 (10) EMPLOYEES.
4. A PERMANENT SINK, UTILITY SINK, STOVE, DISHWASHER, AND REFRIG. TO BE PROVIDED IN KITCHENS. ALL FINISHES TO BE AS SHOWN ON ALL FINISH SCHEDULES.

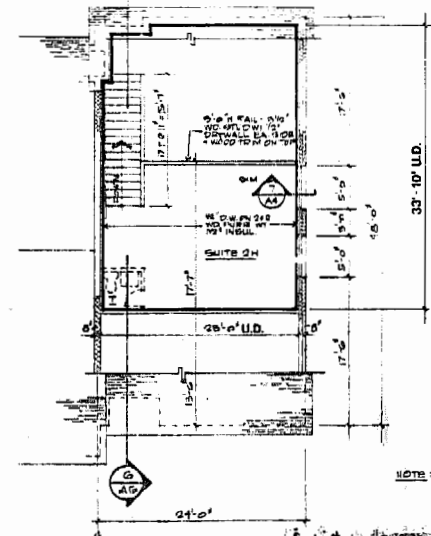


7-1 SECTION
SCALE: 3/8" = 1'-0"



2 FIRST FLOOR PLAN
SCALE: 1/8" = 1'-0"

NOTE:
WALLS SHOWN OUTSIDE OF
UNIT DIMENSIONS ARE
COMMON ELEMENTS



2 MEZZANINE PLAN
SCALE: 1/8" = 1'-0"

NOTE: PLAN AND UNIT DIMENSIONS AT UNITS, CEILING HEIGHTS SAME AS UNIT 2-H

NOTE:
WALLS SHOWN OUTSIDE OF
UNIT DIMENSIONS ARE
COMMON ELEMENTS

Recorded in *Book of Deeds 1274*
in
D. R. No. *247* Page *558*
10-25-1974

WILLIAMSBURG OFFICE PARK
JAMES CITY COUNTY, VIRGINIA



KARL E. KOHLER ASSOCIATES
AIA ARCHITECTS
327 MAPLE AVENUE, WEST
VIENNA, VIRGINIA 22180

COMM. NO. *8500*
DATE: *SEPTEMBER 4, 1983*
REVISIONS: *FEBRUARY 25, 1984*



THIS DRAWING IS THE PROPERTY OF KARL E. KOHLER ASSOCIATES, ARCHITECTS AND IS NOT TO BE REPRODUCED OR USED FOR ANY PROJECT IN WHOLE OR IN PART WITHOUT THEIR EXPRESS WRITTEN PERMISSION.

PHONE 703/251-0301
PHONE 703/251-7970

FLOOR PLANS - BLDG. 2

A2