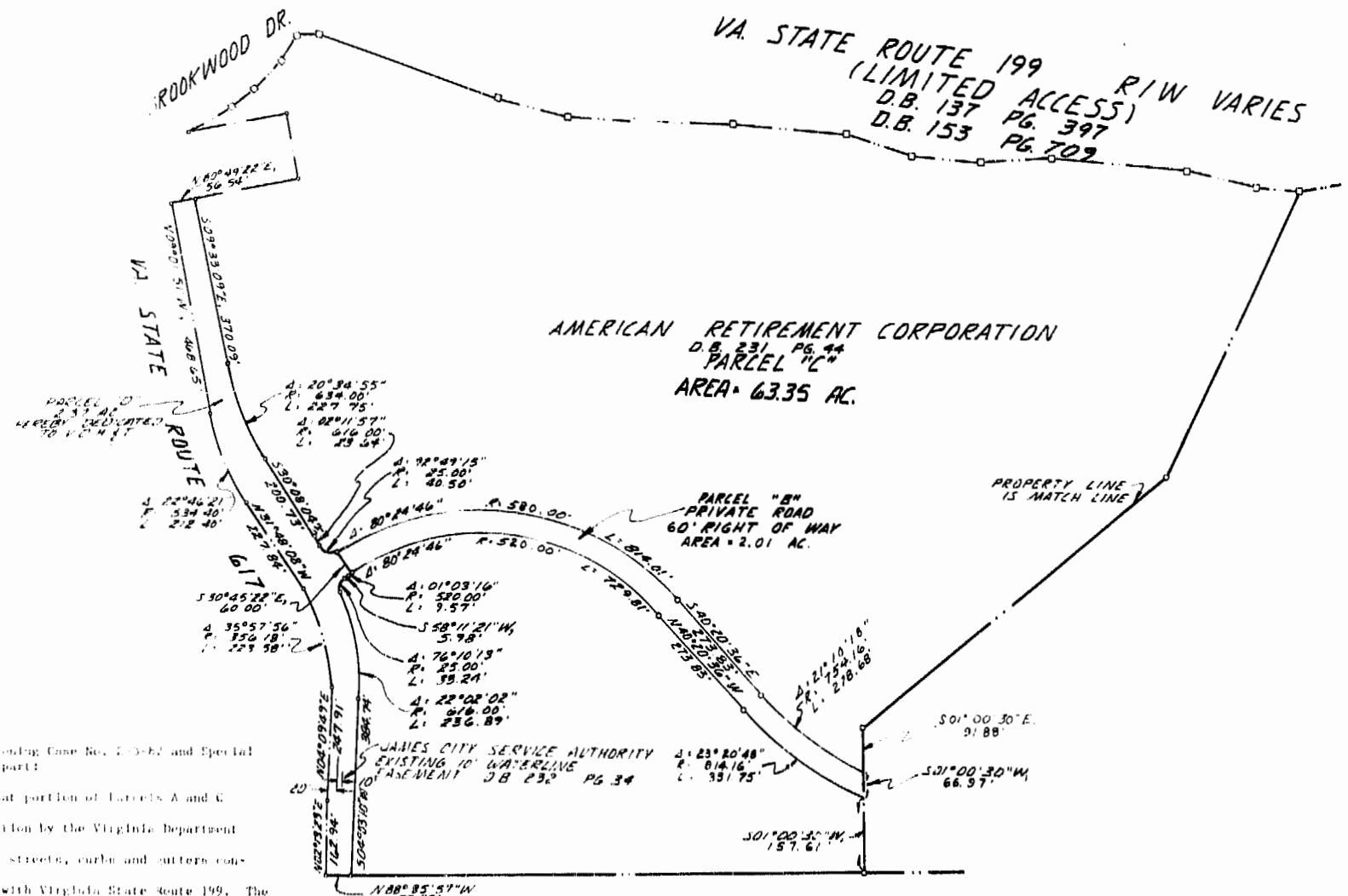


380 NORTH



PARCEL "A"

AMERICAN RETIREMENT CORPORATION  
 D.B. 231 PG. 44  
 PARCEL "C"  
 AREA = 63.35 AC.

PARCEL "B"  
 PRIVATE ROAD  
 60' RIGHT OF WAY  
 AREA = 2.01 AC.

PLAT OF PARCELS "A" AND "B"  
 BEING A SUBDIVISION OF  
 PROPERTY OF  
 AMERICAN RETIREMENT CORPORATION  
 TO BE CONVEYED TO  
 WILLIAMSBURG LANDING, INC.  
 SCALE 1" = 200' OCTOBER 6 1983

N/F DUDLEY C. and MARY S. WALTRIP  
 P.B. 28 PG. 25

Langley and McDonald  
 ENGINEERS-PLANNERS-SURVEYORS  
 VIRGINIA BEACH VIRGINIA

10:45 am.  
 28 day of March, 1984  
 246 vs. 116  
 Helene S. Ward Clerk

