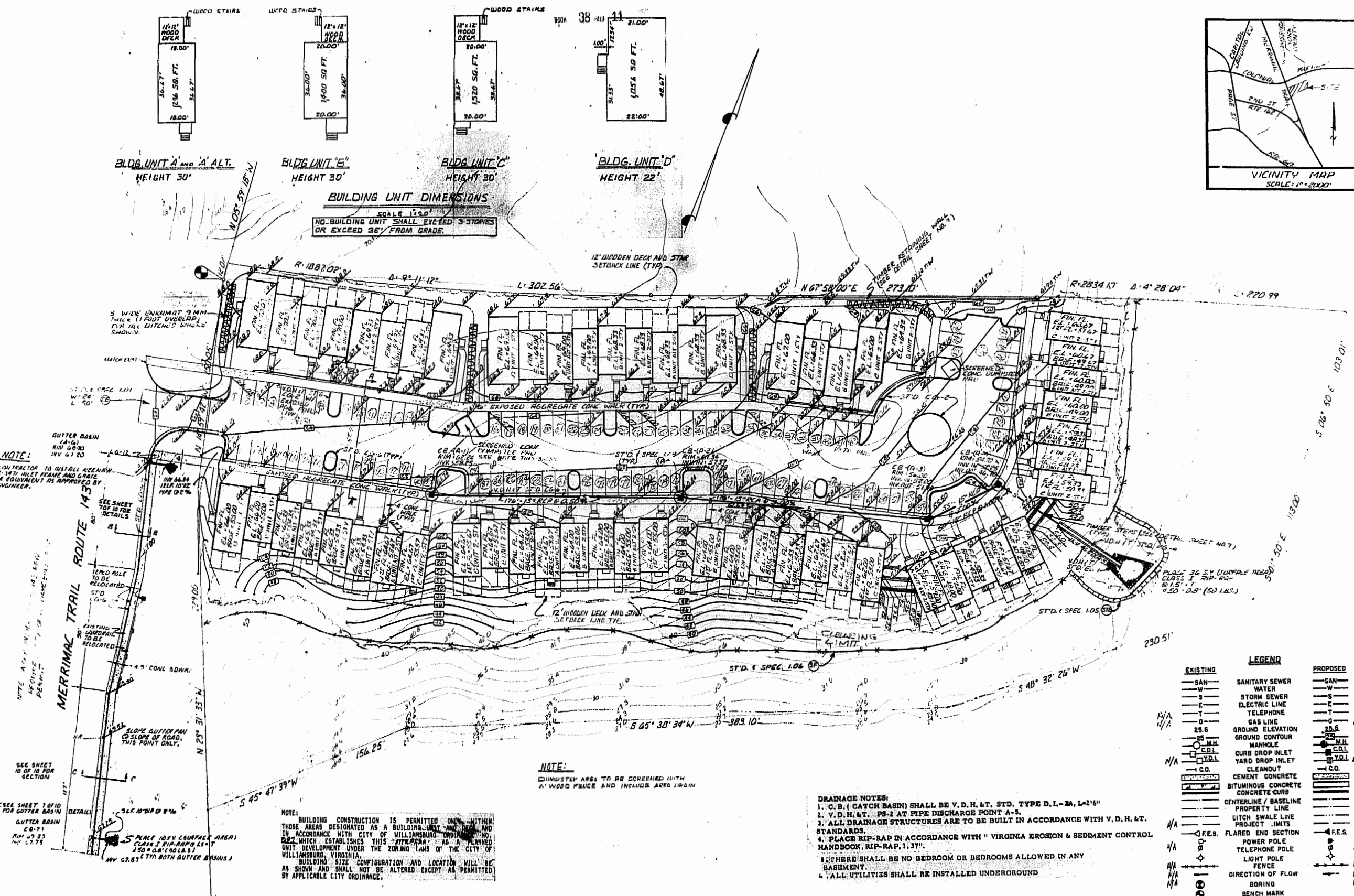


Langley and McDonald
 A PROFESSIONAL CORPORATION
 ENGINEERS • PLANNERS • SURVEYORS
 VIRGINIA BEACH, VIRGINIA

DES.	C.R.O.
DWN.	R.E.D.
CHK.	L.S.B.
DATE	9-16-82

PLANNED UNIT DEVELOPMENT
Priorslee
 WILLIAMSBURG, VIRGINIA
 SITE PLAN

PROJ. NO.	82-86
FLD. BK. NO.	
SHEET OF	10
DWG.	9343



SITE PLAN
 SCALE 1" = 30'

LEGEND

EXISTING	PROPOSED
SAN	SANITARY SEWER
W	WATER
S	STORM SEWER
E	ELECTRIC LINE
T	TELEPHONE
G	GAS LINE
25.6	GROUND ELEVATION
25	GROUND CONTOUR
M.H.	MANHOLE
C.D.I.	CURB DROP INLET
Y.D.I.	YARD DROP INLET
C.O.	CLEANOUT
CC	CEMENT CONCRETE
BC	BITUMINOUS CONCRETE
CL	CONCRETE CURB
CL	CENTERLINE / BASELINE
CL	PROPERTY LINE
CL	DITCH SWALE LINE
CL	PROJECT LIMITS
F.E.S.	FLARED END SECTION
P	POWER POLE
T	TELEPHONE POLE
L	LIGHT POLE
F	FENCE
→	DIRECTION OF FLOW
B	BORING
BM	BENCH MARK
T	TREE LINE
FH	FIRE HYDRANT

11:38 AM
 Recorded 12 day of JAN. 1983
 in
 Dr. B. No. 62 pages 23
 William S. Langley, Clerk

REVISED 10-25-82 GUTTER BASINS
 REVISED 9-25-82 AS PER CITY COMMENT