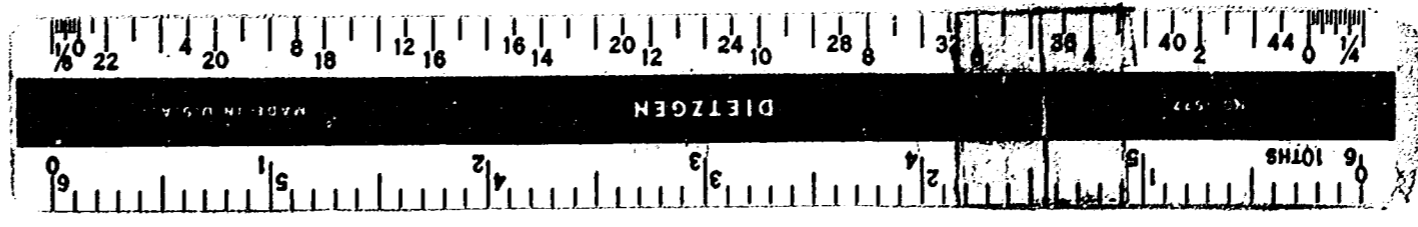
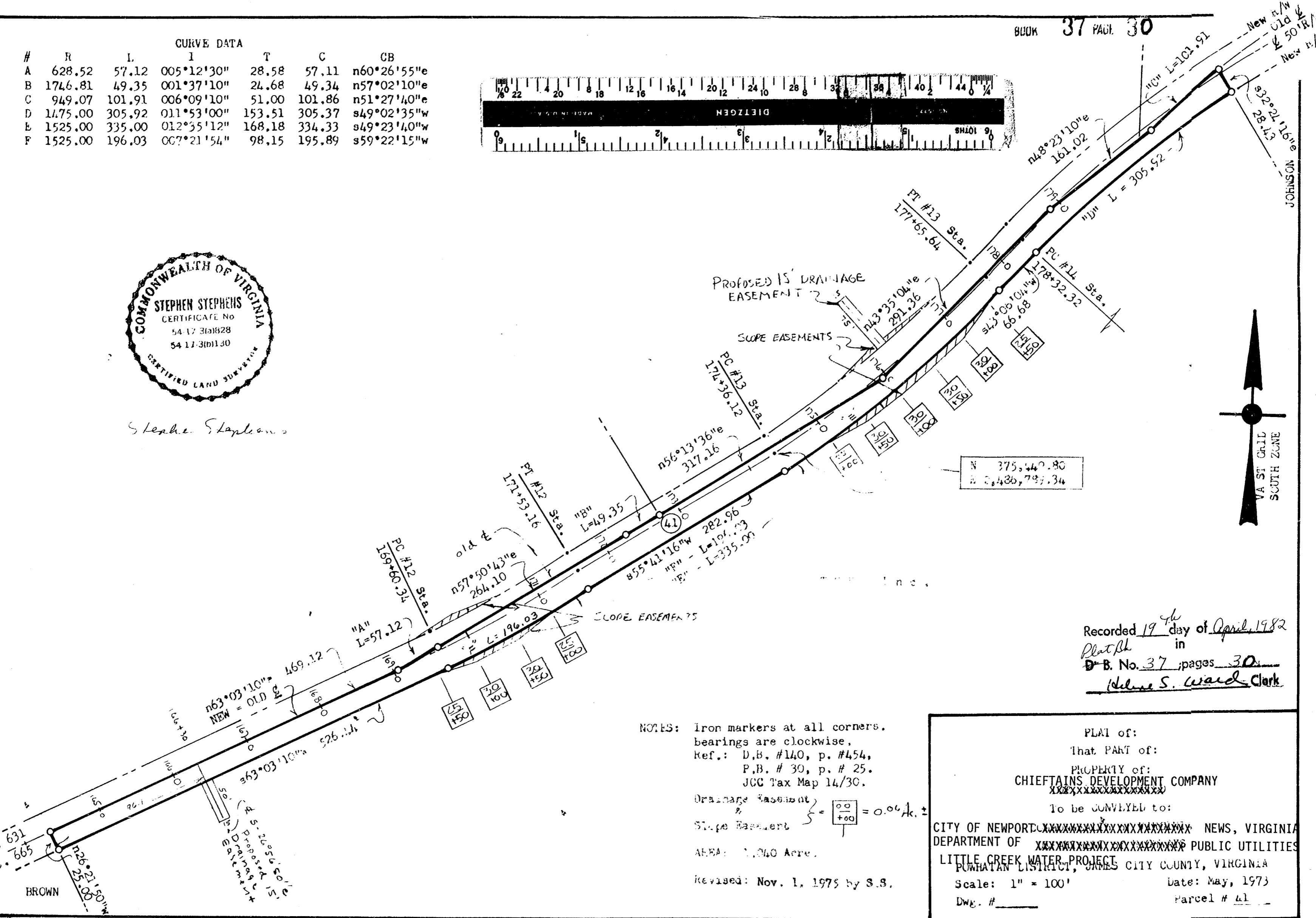


#	R	L	I	T	C	CB
A	628.52	57.12	005°12'30"	28.58	57.11	n60°26'55"e
B	1746.81	49.35	001°37'10"	24.68	49.34	n57°02'10"e
C	949.07	101.91	006°09'10"	51.00	101.86	n51°27'40"e
D	1175.00	305.92	011°53'00"	153.51	305.37	s49°02'35"w
E	1525.00	335.00	012°35'12"	168.18	334.33	s49°23'40"w
F	1525.00	196.03	007°21'54"	98.15	195.89	s59°22'15"w



Stephen Stephens

To Rte. #610  
Relocated Rt. 631  
Formerly Rt. 665



N 375,440.80  
S 2,486,787.34

Recorded 19<sup>th</sup> day of April, 1982  
Plat # in  
D.B. No. 37, pages 30  
Walter S. Ward, Clerk

NOTES: Iron markers at all corners.  
bearings are clockwise.  
Ref.: D.B. #140, p. #454,  
P.B. # 30, p. # 25.  
JCC Tax Map 14/30.  
Drainage Easement } = 0.06 Ak. ±  
Slope Easement }  
AREA: 1.040 Acre.  
Revised: Nov. 1, 1975 by S.S.

PLAT of:  
That PART of:  
PROPERTY of:  
**CHIEFTAINS DEVELOPMENT COMPANY**  
To be CONVEYED to:  
CITY OF NEWPORT NEWS, VIRGINIA  
DEPARTMENT OF PUBLIC UTILITIES  
LITTLE CREEK WATER PROJECT  
POWhatan DISTRICT, JAMES CITY COUNTY, VIRGINIA  
Scale: 1" = 100'  
Date: May, 1973  
Parcel # 41