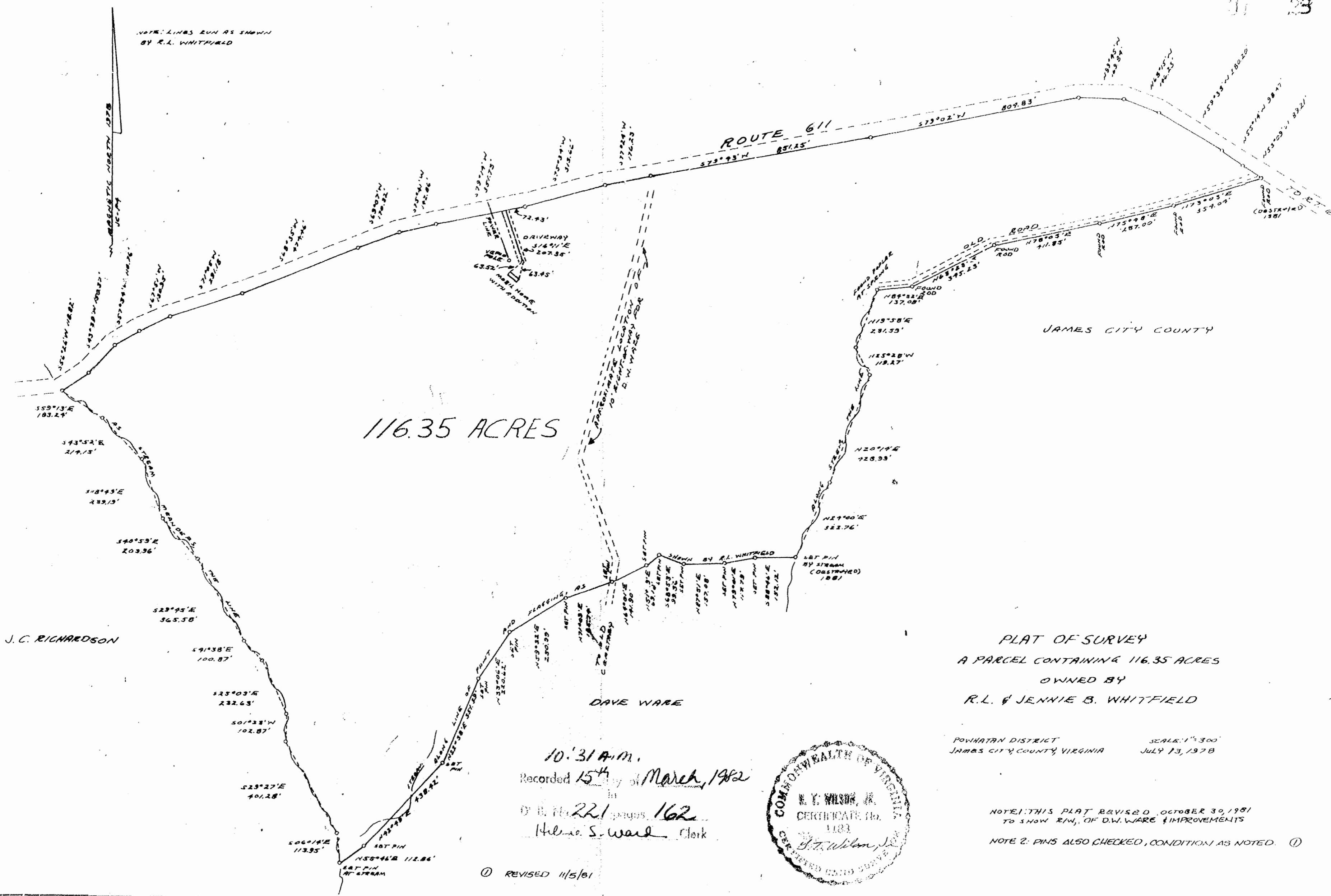


NOTE: LINES RUN AS SHOWN BY R.L. WHITFIELD



116.35 ACRES

JAMES CITY COUNTY

J. C. RICHARDSON

DAVE WARE

PLAT OF SURVEY  
 A PARCEL CONTAINING 116.35 ACRES  
 OWNED BY  
 R.L. & JENNIE B. WHITFIELD

POWHATAN DISTRICT SCALE: 1"=300'  
 JAMES CITY COUNTY, VIRGINIA JULY 13, 1978

10:31 A.M.  
 Recorded 15<sup>th</sup> day of March, 1982  
 D. B. McRae, Jr. 162  
 Helene S. Ward, Clerk



NOTE 1: THIS PLAT REVISED, OCTOBER 30, 1981 TO SHOW R/W, OF D.W. WARE & IMPROVEMENTS  
 NOTE 2: PINS ALSO CHECKED, CONDITION AS NOTED. ①

① REVISED 11/5/81

G.T. Wilson, Jr., C.L.S., INC. BOX 791 WEST POINT, VIRGINIA

