

MONTICELLO AVENUE

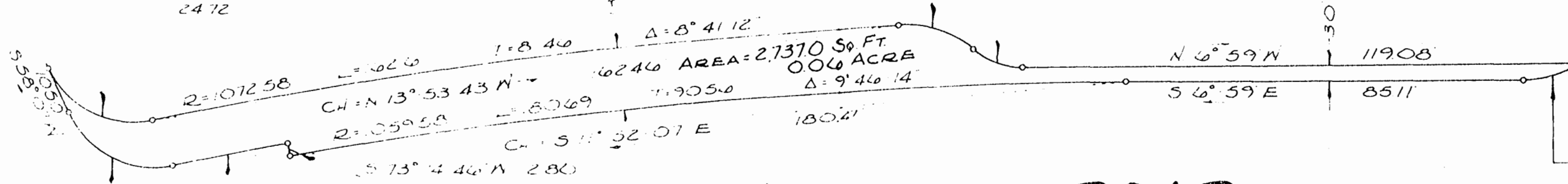
MT. VERNON AVENUE

SAFENAY STORES, INC  
(PROPOSED STORE NO 230)

R=230 L=1400  
T=884 Δ=42°02'25"  
CH=N 1°28'55"E 1450

R=1622 L=1118  
T=582 Δ=39°29'32"  
CH=N 12°45'46"E 1096

R=200 L=2465  
T=1513 Δ=76°20'25"  
CH=N 19°56'51"E 2472



AREA=2,737.0 SQ. FT.  
0.06 ACRE

RICHMOND ROAD

R=200 L=2460  
T=1549 Δ=76°13'27"  
CH=S 20°00'17"W 2469

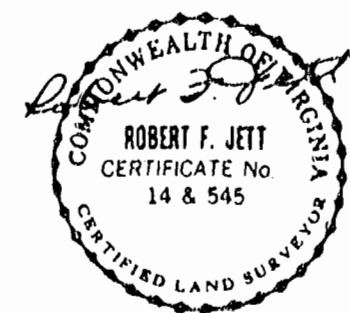
R=106238 L=2510  
T=1255 Δ=1°2'13"  
CH=S 17°25'51"E 2510

R=250 L=1237  
T=631 Δ=28°21'27"  
CH=S 21°09'44"E 1225

PLAT OF PROPERTY SITUATED  
ON THE WESTERN LINE OF  
RICHMOND ROAD BETWEEN  
MONTICELLO AVENUE AND  
MT. VERNON AVENUE.

WILLIAMSBURG, VA.  
MARCH 7, 1980 SCALE 1"=20'

CHAS. H. FLEET & ASSOCS.  
ENGINEER & SURVEYORS



1:30 p.m.  
Recorded 15<sup>th</sup> day of Oct. 1980  
in  
D. B. No. 59 pages 472  
Justice C. Clithan, Clerk  
By Claudia H. Blake, Dep. Clerk

