

PLAT SHOWING PROPERTY OF
FREDERICK R. & ELIZABETH L. CARTER
BEING LOCATED ON RTE. 168Y
JAMES CITY COUNTY, VIRGINIA

JOHN N. RUTH - LAND SURVEYOR
HAMPTON, VIRGINIA
Date: Feb. 26, 1980 Scale: 1" = 30'

P.F. N 64° 50' 50" W 238.1'

P.F.
(Dent)
Reset

NOW OR FORMERLY
R.M. HAZELWOOD

S 26° 49' 10" W 200.63'

Area = 1.126 Acre

Rad
FIND

2-25-80

This is to certify that the original plat of the property shown herein is a true and correct copy of the original plat as shown herein and that the same is a true and correct copy of the original plat as shown herein and that the same is a true and correct copy of the original plat as shown herein.

John N. Ruth C.L.S.

NOTE: SUBJECT TO RIGHT OF WAYS,
EASEMENTS, CONVENTS &
SERVITUDES OF RECORD.

RECORDED PLAT BY OTHERS
DOES NOT FORM A CLOSED
POLYGON.

REFERENCES:
D.B. 60 PG. 302
D.B. 56 PG. 224
HWY P.B. 1 PG. 39

VHC Mon.
Found

R/W
P.C. STA.
101+86.02±
HWY CURVE TO LEFT

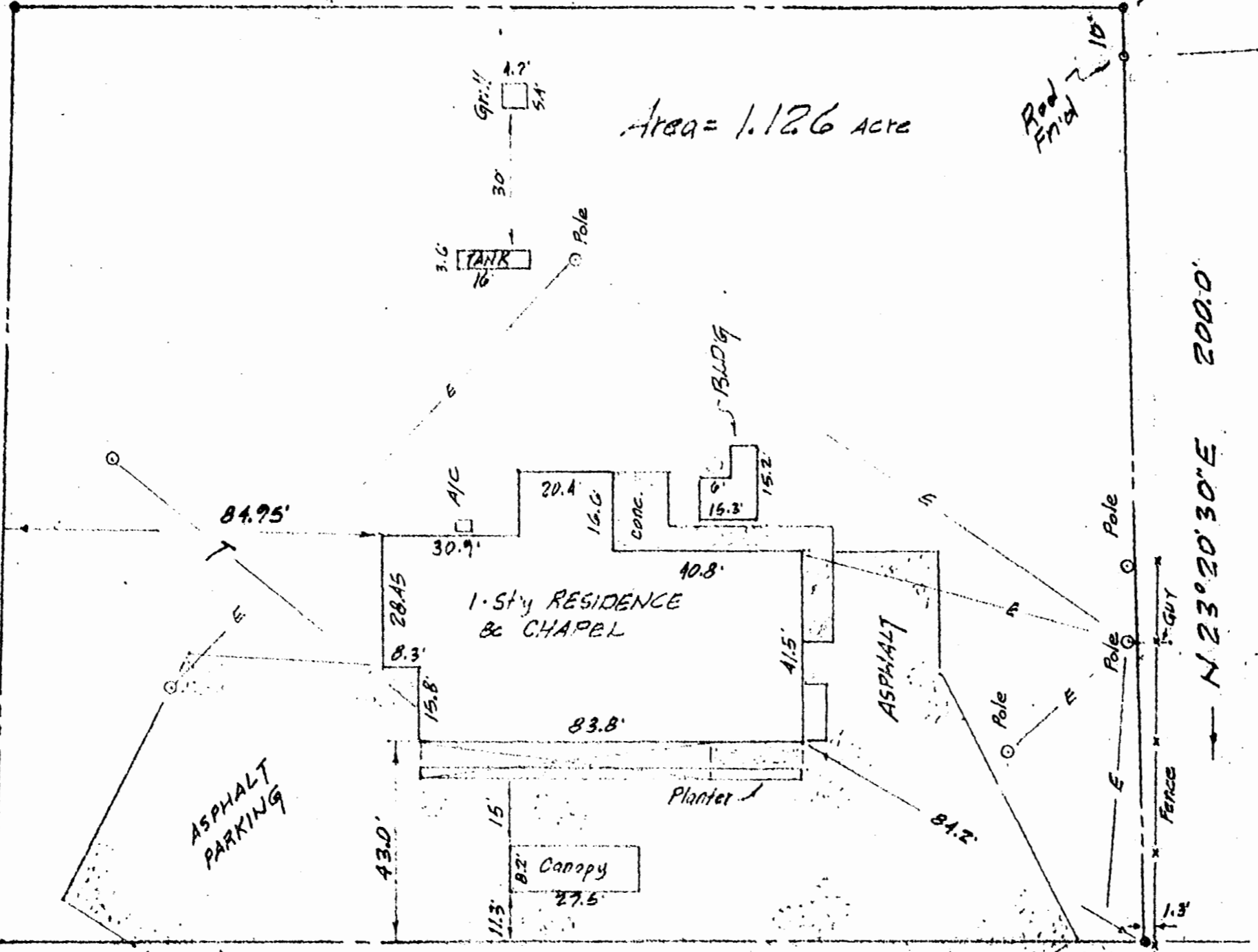
Chord S 64° 59' 40" E 250.20'
Δ = 03° 22' 31"
R = 4248.82'
Arc = 250.3

RTE. 168 Y 250' R/W

1.7 Miles To
RTE 607

EDGE PAVEMENT

N 23° 20' 30" E 200.0'



Recorded 29th day of Feb. 1980
in

D. B. No 201 pages 507

Juliette C. Clocher, Clerk
By Claudia A. Blake, Dep. Clerk