

CSO RAILROAD

S44°32'00"

VEPCO 0N34

467

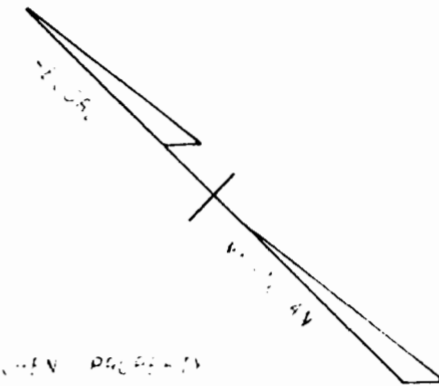
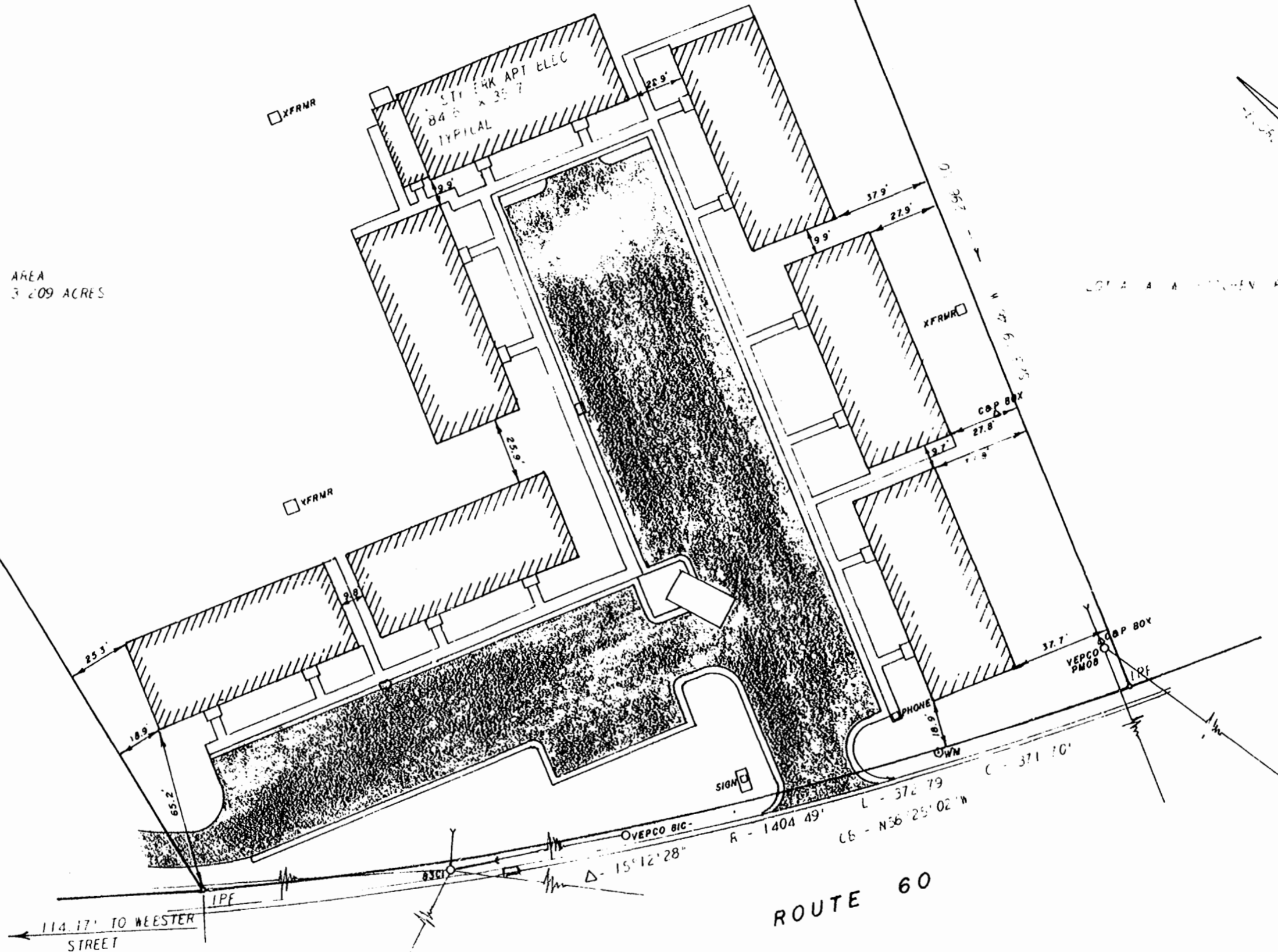
VEPCO 0N64

1P+

AREA  
3.209 ACRES

THREE LANE YORK STREET INN INC

52 112  
7 20 22.5 IN



114.17' TO WEESTER STREET

YORK STREET

ROUTE 60

REFERENCES  
 LEED BOOK 46 PAGE 159  
 LEED BOOK 21 PAGE 77  
 LEED BOOK 21 PAGE 211  
 PLAT BOOK 11 PAGE 5



Recorded 4<sup>th</sup> day of Feb. 1980  
 Plat DB No. 58 in Page 591  
 B. B. No. 35 pages 127  
*Jubette C. Clarke* Clerk



**architects and engineers, Inc.**  
 architects engineers surveyors and planners  
 Williamsburg, Virginia

**A SURVEY FOR CONVEYANCE TO  
 YORK STREET INN, INC.**  
 A PARCEL OF LAND CONTAINING 3.209 ACRES  
 LYING IN THE  
 CITY OF WILLIAMSBURG, VIRGINIA

SCALE: 1" = 40'  
 DATE: JAN. 14, 1980

DWG. **3511**