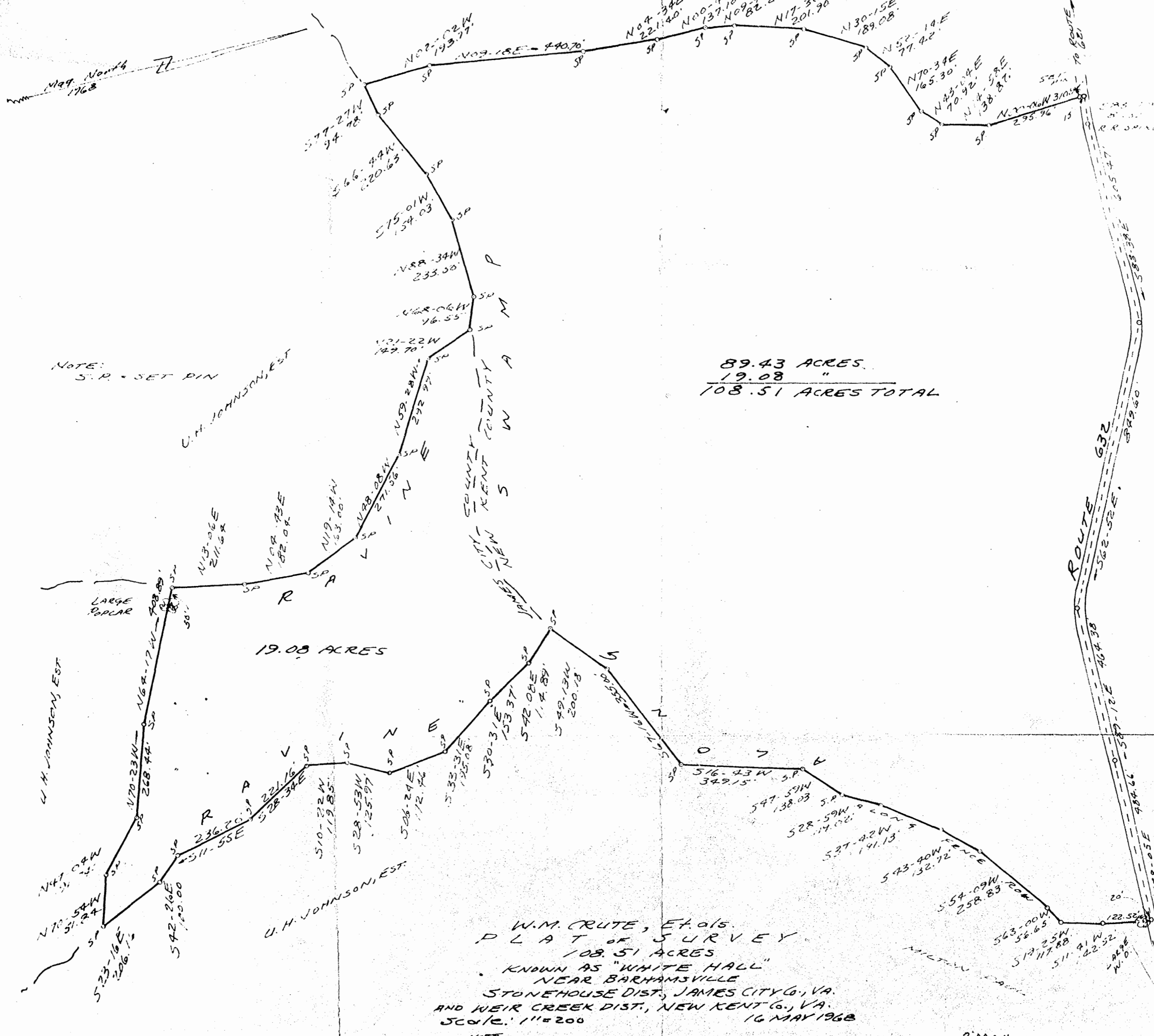


J. J. BAECHE



89.43 ACRES.
19.08 "
108.51 ACRES TOTAL

NOTE:
S.P. - SET PIN

19.08 ACRES

W.M. CRUTE, ET AL'S.
P L A T OF SURVEY
108.51 ACRES
KNOWN AS "WHITE HALL"
NEAR BARRHAMSVILLE
STONEHOUSE DIST., JAMES CITY CO., VA.
AND NEIR CREEK DIST., NEW KENT CO., VA.
SCALE: 1"=200
NOTE -
BASED ON FIELD NOTES OF V.D. McMANUS, C.L.S.



3:00 p.m.
Recorded 14th day of November, 1979
In
D. B. No. 199 pages 262
Julietta C. Jordan Clerk



121 INK W 2