

MATCH TO SHEET 2

MATCH LINE A

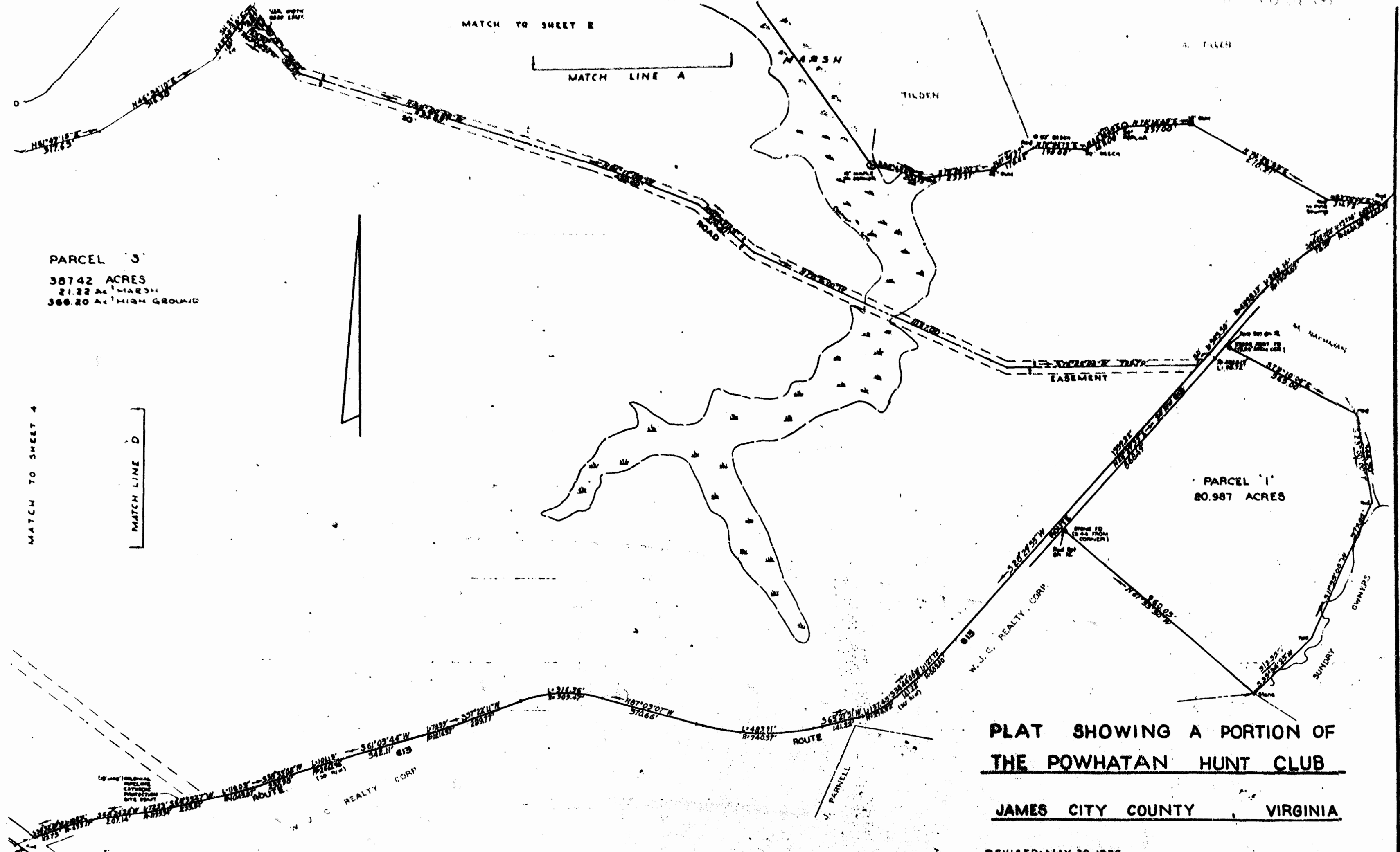
A. TALEN

PARCEL 3
387.42 ACRES
21.22 AC MARSH
366.20 AC HIGH GROUND

PARCEL 1
80.987 ACRES

MATCH TO SHEET 4

MATCH LINE D



**PLAT SHOWING A PORTION OF
THE POWHATAN HUNT CLUB**

JAMES CITY COUNTY, VIRGINIA

REVISED: MAY 30, 1979
REVISED: NOV. 28, 1978

OCTOBER 20, 1977 SCALE: GRAPHIC

3:57
Recorded 30th day of August, 1979
in
D. B. No. 197, pages 204
J. Parnell Clerk

J.K. TIMMONS & ASSOCIATES, INC.
CONSULTING ENGINEERS
RICHMOND, VIRGINIA

