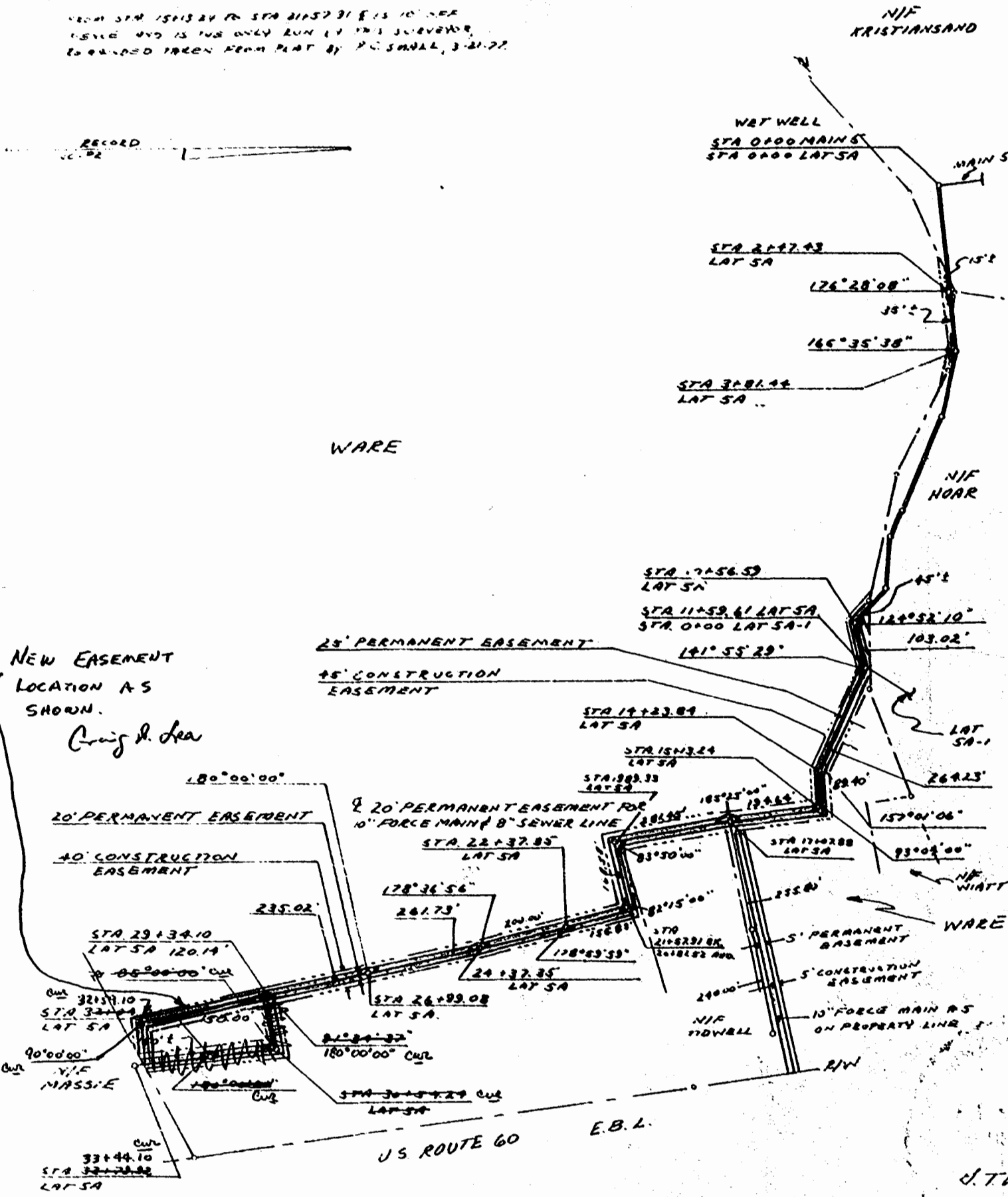


1/2" SHADDED AREA FOR PERMANENT EASEMENT
 FROM STA 15412.24 TO STA 21157.31 E IS 10' SEE
 15412 AND IS THE ONLY RUN BY THIS SURVEYOR.
 IS SHADDED GREEN FROM PLAT BY P.C. SMALL, 3-21-77

RECORD
 10-12



REF. COAST PLANS SHEETS 495 OF 25, 38C III

2:25 PM.

Recorded 1st day of Nov. 1978

D. B. No. 189 pages 404

Juliette C. Clifton Clerk
 By Charles St. Alpha Dep. Clerk

Drawing #53-5A-3

A PLAT FOR SEWER EASEMENT
 TO: JAMES CITY SERVICE AUTHORITY
 FROM: DAVID WARE

POWhatan DISTRICT
 JAMES CITY COUNTY VIRGINIA
 SCALE: 1"=300'
 JUNE 15, 1978

