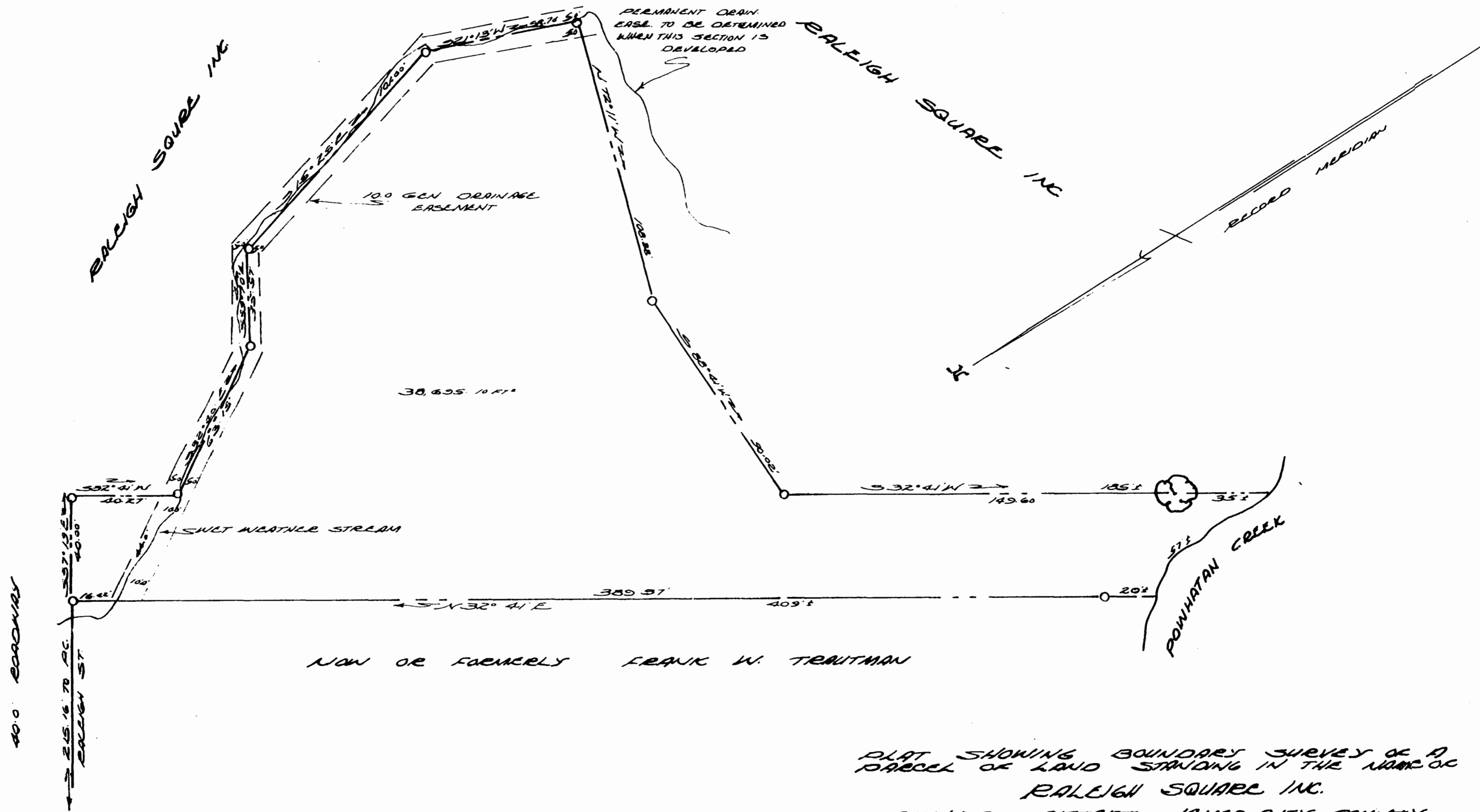


RALEIGH SQUARE SUB.



PLAT SHOWING BOUNDARY SURVEY OF A PARCEL OF LAND STANDING IN THE NAME OF RALEIGH SQUARE INC.

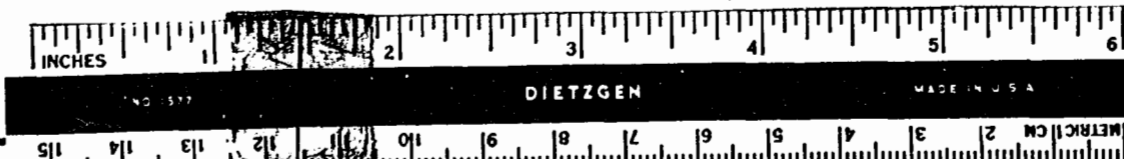
GREENBELT DISTRICT JAMES CITY COUNTY VIRGINIA

17 JULY 1970

SCALE 1"=30'

V.D. MCMAHUS & ASSOC'S  
WILLIAMSBURG, VA.  
BY R.F. AYLE C.L.S.

*R.F. Aytle*



Recorded 26<sup>th</sup> day of July

D.B. 186 in Page 246  
B. No. 35 pages 27

*J. Walter Clarke* Clerk