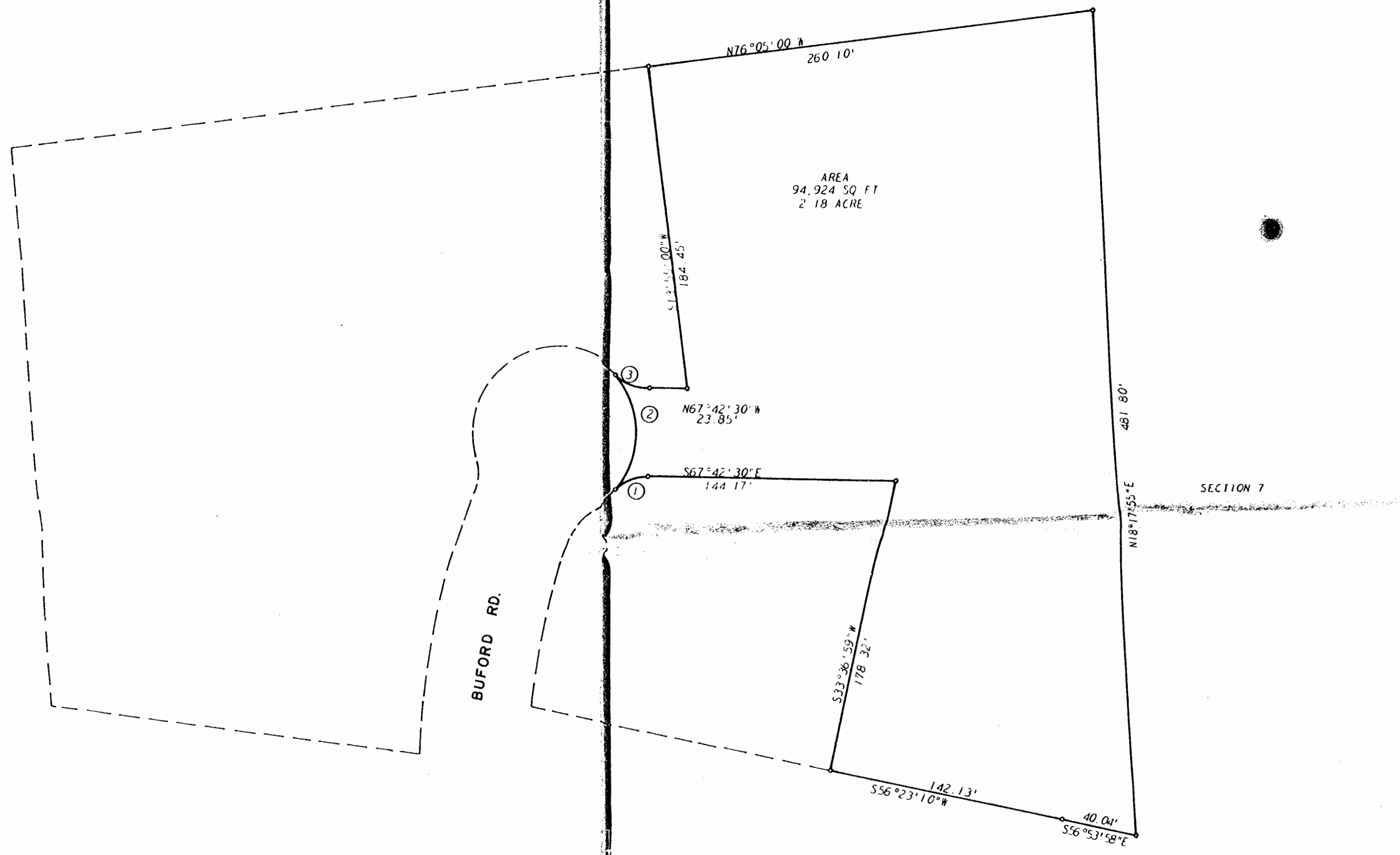


WILLIAMSBURG WEST



NO	DELTA	RADIUS	LENGTH	TANGENT	CHORD	CHORD BEARING
1	46°11'24"	25.00'	21.03'	11.18'	20.41'	N88°11'48"E
2	83°37'12"	50.00'	72.97'	44.72'	66.27'	S22°17'30"W
3	48°11'24"	25.00'	21.03'	11.18'	20.41'	N43°36'52"W

3:45 pm.  
 Recorded 11<sup>th</sup> day of July 1978  
 in  
 P. D. B. No. 7, pages 725  
 J. C. Clatter, Clerk  
 by Claudia S. Blake, Dep. Clerk

Recorded 11<sup>th</sup> day of July  
 in  
 P. B. No. 35, pages 15  
 R. B. 7 page 725 3:45 pm



Revisions


A PLAT FOR RELEASE OF A PART OF A  
 PARCEL OF LAND STANDING IN THE  
 NAME OF HERITAGE DEVELOPMENT COMPANY  
 LYING IN JAMES CITY COUNTY, VIRGINIA

architects and engineers, inc.  
 architects engineers surveyors and planners  
 Williamsburg, Virginia



proj	1933-A
date	5-25-78
scale	1" = 50'
dwn	
ckd	
dwn no	
	1933-A1

