

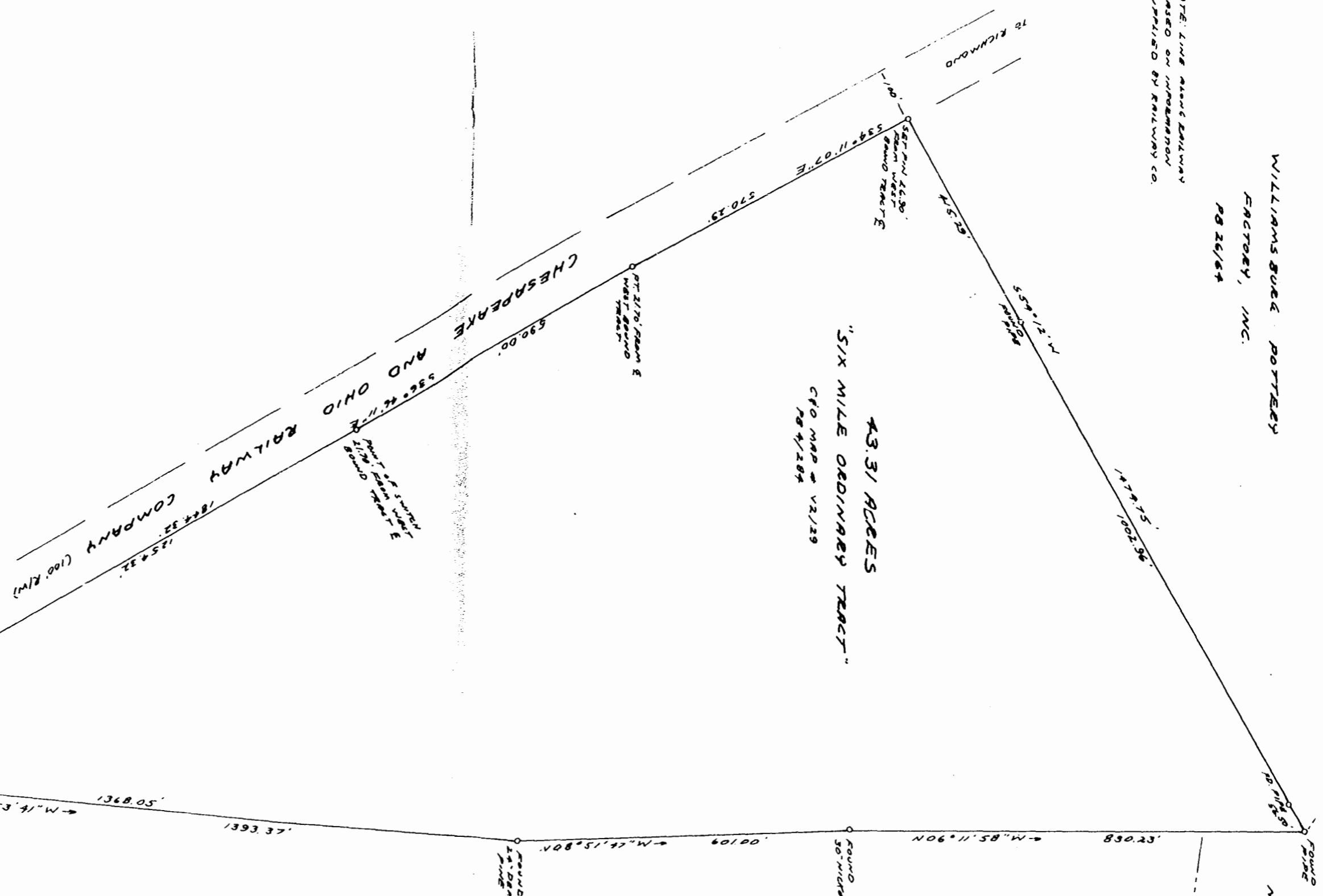
MAGNETIC NORTH AS PER RAILWAY PLAT

NOTE: LINE ALONG RAILWAY
DASED ON INFORMATION
SUPPLIED BY RAILWAY CO.

WILLIAMS BURE POTTERY
FACTORY, INC.
PB 26/84

43.31 ACRES
"SIX MILE ORDINARY TRACT"
CFO MAP # V2/29
PB 4/284

MALONEY FAMILY
TRUST



A PARCEL OF LAND CONTAINING
43.31 ACRES KNOWN AS THE
"SIX MILE ORDINARY TRACT"
TO BE CONVEYED FROM
CHESAPEAKE & OHIO RAILWAY COMPANY TO
ARISTONE INVESTORS
STONEHOUSE DISTRICT JAMES CITY COUNTY,
APRIL 5, 1978 SCALE 1"=200'
VIRGINIA



WILLIAM M. PETTITT, JR.
D.M. MARTIN & ASSOC
MAP NO. 90030-51
08/25/58 & 226/510

11:25 A.M.
Recorded 20th day of May, 1978
in
D. B. No. 184 pages 417
Juliette & Clozier Clerk



JOB NO 90071-21