

Table with columns: CURVE DATA, NO, RAD, ARC, TAN, CHORD. Contains curve data for lots 111-130.

Table with columns: CURVE DATA, NO, RAD, ARC, TAN, CHORD. Contains curve data for lots 131-150.

Table with columns: CURVE DATA, NO, RAD, ARC, TAN, CHORD. Contains curve data for lots 151-170.

Table with columns: CURVE DATA, NO, RAD, ARC, TAN, CHORD. Contains curve data for lots 171-190.

Table with columns: CURVE DATA, NO, RAD, ARC, TAN, CHORD. Contains curve data for lots 191-210.

Table with columns: NO, BEARING, DIST. Contains centerline and boundary data for lots 1-5.

Table with columns: LOT NO, BEARING, DIST. Contains lot data for lots 24-30.

Table with columns: CURVE DATA, NO, RAD, ARC, TAN, CHORD. Contains curve data for lots 1-23.

Table with columns: CURVE DATA, NO, RAD, ARC, TAN, CHORD. Contains curve data for lots 24-43.

Table with columns: CURVE DATA, NO, RAD, ARC, TAN, CHORD. Contains curve data for lots 44-63.

Table with columns: CURVE DATA, NO, RAD, ARC, TAN, CHORD. Contains curve data for lots 64-83.

Table with columns: CURVE DATA, NO, RAD, ARC, TAN, CHORD. Contains curve data for lots 84-103.

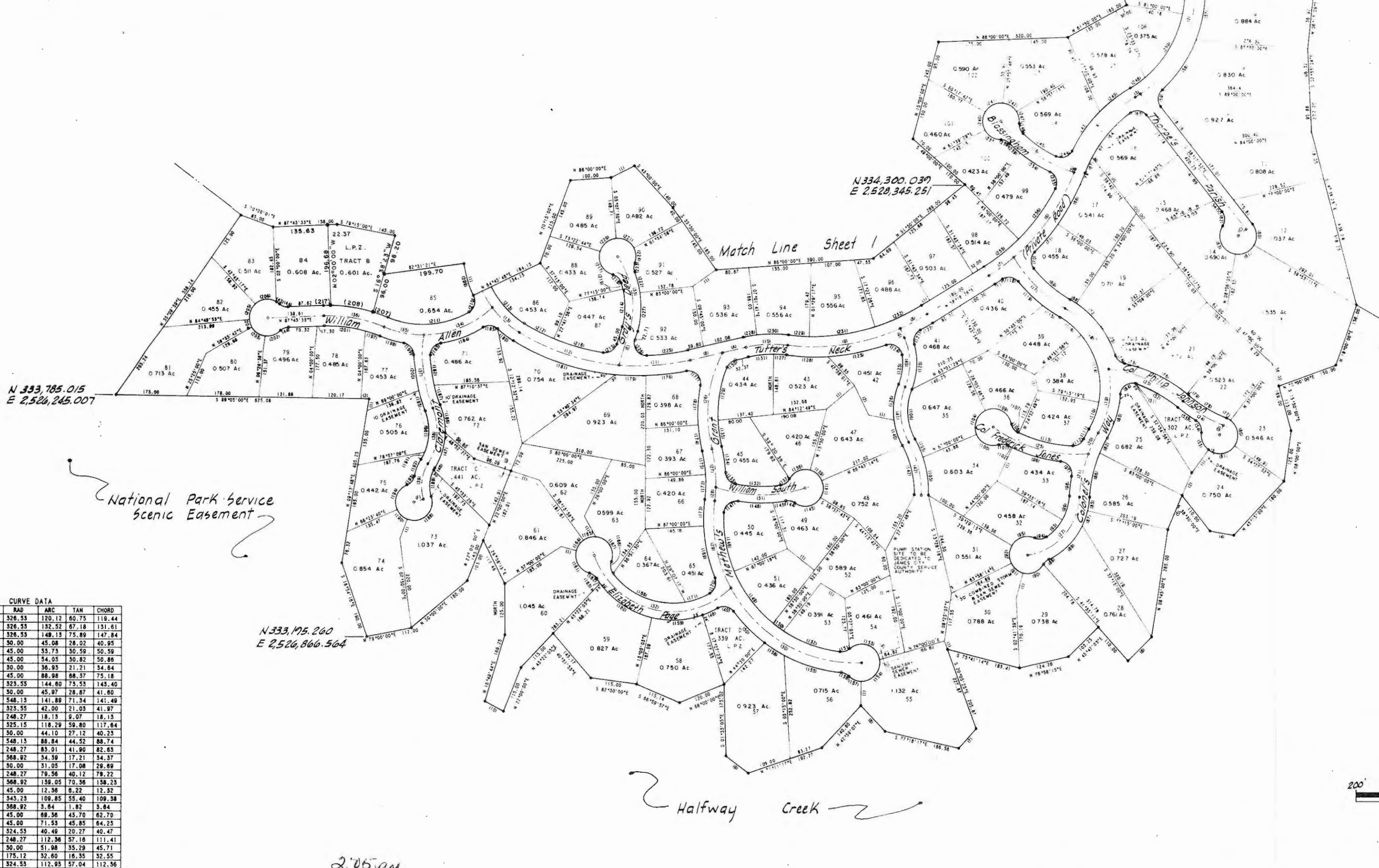
Table with columns: CURVE DATA, NO, RAD, ARC, TAN, CHORD. Contains curve data for lots 104-123.

Table with columns: CURVE DATA, NO, RAD, ARC, TAN, CHORD. Contains curve data for lots 124-143.

Table with columns: CURVE DATA, NO, RAD, ARC, TAN, CHORD. Contains curve data for lots 144-163.

Table with columns: CURVE DATA, NO, RAD, ARC, TAN, CHORD. Contains curve data for lots 164-183.

Table with columns: CURVE DATA, NO, RAD, ARC, TAN, CHORD. Contains curve data for lots 184-203.



E 2,520,000
N 335,000

N 333,785.015
E 2,526,245.007

N 334,300.039
E 2,520,345.251

N 333,785.260
E 2,526,866.564

National Park Service
Scenic Easement

Halfway Creek

2:05 p.m.
Recorded 3rd day of March, 1978
in
D. B. No. 182, pages 527
Juliette C. Clatter, Clerk
By Dawn K. Routs, Dep. Clerk

PLAT OF
TUTTER'S NECK SUBDIVISION
Kingsmill on the James
BUSCH PROPERTIES, INC.
JAMES CITY COUNTY, VIRGINIA

LANGLEY, McDONALD & OVERMAN
CONSULTING ENGINEERS
VA. BEACH, VA.

