

CURVE DATA					CURVE DATA					CURVE DATA				
NO	Δ	IBC	TAN	CHORD	NO	Δ	IBC	TAN	CHORD	NO	Δ	IBC	TAN	CHORD
1	174°45'51"	106.30	89.06	40.77	60.50	174°46'23"	84.80	60.71	40.52	60.55	174°46'41"	223.24	146.77	106.18
2	174°45'51"	106.30	89.06	40.77	61	174°46'23"	84.80	60.71	40.52	61.50	174°46'41"	223.24	146.77	106.18
3	174°45'51"	106.30	89.06	40.77	62	174°46'23"	84.80	60.71	40.52	62.50	174°46'41"	223.24	146.77	106.18
4	174°45'51"	106.30	89.06	40.77	63	174°46'23"	84.80	60.71	40.52	63.50	174°46'41"	223.24	146.77	106.18
5	174°45'51"	106.30	89.06	40.77	64	174°46'23"	84.80	60.71	40.52	64.50	174°46'41"	223.24	146.77	106.18
6	174°45'51"	106.30	89.06	40.77	65	174°46'23"	84.80	60.71	40.52	65.50	174°46'41"	223.24	146.77	106.18
7	174°45'51"	106.30	89.06	40.77	66	174°46'23"	84.80	60.71	40.52	66.50	174°46'41"	223.24	146.77	106.18
8	174°45'51"	106.30	89.06	40.77	67	174°46'23"	84.80	60.71	40.52	67.50	174°46'41"	223.24	146.77	106.18
9	174°45'51"	106.30	89.06	40.77	68	174°46'23"	84.80	60.71	40.52	68.50	174°46'41"	223.24	146.77	106.18
10	174°45'51"	106.30	89.06	40.77	69	174°46'23"	84.80	60.71	40.52	69.50	174°46'41"	223.24	146.77	106.18
11	174°45'51"	106.30	89.06	40.77	70	174°46'23"	84.80	60.71	40.52	70.50	174°46'41"	223.24	146.77	106.18
12	174°45'51"	106.30	89.06	40.77	71	174°46'23"	84.80	60.71	40.52	71.50	174°46'41"	223.24	146.77	106.18
13	174°45'51"	106.30	89.06	40.77	72	174°46'23"	84.80	60.71	40.52	72.50	174°46'41"	223.24	146.77	106.18
14	174°45'51"	106.30	89.06	40.77	73	174°46'23"	84.80	60.71	40.52	73.50	174°46'41"	223.24	146.77	106.18
15	174°45'51"	106.30	89.06	40.77	74	174°46'23"	84.80	60.71	40.52	74.50	174°46'41"	223.24	146.77	106.18
16	174°45'51"	106.30	89.06	40.77	75	174°46'23"	84.80	60.71	40.52	75.50	174°46'41"	223.24	146.77	106.18
17	174°45'51"	106.30	89.06	40.77	76	174°46'23"	84.80	60.71	40.52	76.50	174°46'41"	223.24	146.77	106.18
18	174°45'51"	106.30	89.06	40.77	77	174°46'23"	84.80	60.71	40.52	77.50	174°46'41"	223.24	146.77	106.18
19	174°45'51"	106.30	89.06	40.77	78	174°46'23"	84.80	60.71	40.52	78.50	174°46'41"	223.24	146.77	106.18
20	174°45'51"	106.30	89.06	40.77	79	174°46'23"	84.80	60.71	40.52	79.50	174°46'41"	223.24	146.77	106.18
21	174°45'51"	106.30	89.06	40.77	80	174°46'23"	84.80	60.71	40.52	80.50	174°46'41"	223.24	146.77	106.18
22	174°45'51"	106.30	89.06	40.77	81	174°46'23"	84.80	60.71	40.52	81.50	174°46'41"	223.24	146.77	106.18
23	174°45'51"	106.30	89.06	40.77	82	174°46'23"	84.80	60.71	40.52	82.50	174°46'41"	223.24	146.77	106.18
24	174°45'51"	106.30	89.06	40.77	83	174°46'23"	84.80	60.71	40.52	83.50	174°46'41"	223.24	146.77	106.18
25	174°45'51"	106.30	89.06	40.77	84	174°46'23"	84.80	60.71	40.52	84.50	174°46'41"	223.24	146.77	106.18
26	174°45'51"	106.30	89.06	40.77	85	174°46'23"	84.80	60.71	40.52	85.50	174°46'41"	223.24	146.77	106.18
27	174°45'51"	106.30	89.06	40.77	86	174°46'23"	84.80	60.71	40.52	86.50	174°46'41"	223.24	146.77	106.18
28	174°45'51"	106.30	89.06	40.77	87	174°46'23"	84.80	60.71	40.52	87.50	174°46'41"	223.24	146.77	106.18
29	174°45'51"	106.30	89.06	40.77	88	174°46'23"	84.80	60.71	40.52	88.50	174°46'41"	223.24	146.77	106.18
30	174°45'51"	106.30	89.06	40.77	89	174°46'23"	84.80	60.71	40.52	89.50	174°46'41"	223.24	146.77	106.18
31	174°45'51"	106.30	89.06	40.77	90	174°46'23"	84.80	60.71	40.52	90.50	174°46'41"	223.24	146.77	106.18
32	174°45'51"	106.30	89.06	40.77	91	174°46'23"	84.80	60.71	40.52	91.50	174°46'41"	223.24	146.77	106.18
33	174°45'51"	106.30	89.06	40.77	92	174°46'23"	84.80	60.71	40.52	92.50	174°46'41"	223.24	146.77	106.18
34	174°45'51"	106.30	89.06	40.77	93	174°46'23"	84.80	60.71	40.52	93.50	174°46'41"	223.24	146.77	106.18
35	174°45'51"	106.30	89.06	40.77	94	174°46'23"	84.80	60.71	40.52	94.50	174°46'41"	223.24	146.77	106.18
36	174°45'51"	106.30	89.06	40.77	95	174°46'23"	84.80	60.71	40.52	95.50	174°46'41"	223.24	146.77	106.18
37	174°45'51"	106.30	89.06	40.77	96	174°46'23"	84.80	60.71	40.52	96.50	174°46'41"	223.24	146.77	106.18
38	174°45'51"	106.30	89.06	40.77	97	174°46'23"	84.80	60.71	40.52	97.50	174°46'41"	223.24	146.77	106.18
39	174°45'51"	106.30	89.06	40.77	98	174°46'23"	84.80	60.71	40.52	98.50	174°46'41"	223.24	146.77	106.18
40	174°45'51"	106.30	89.06	40.77	99	174°46'23"	84.80	60.71	40.52	99.50	174°46'41"	223.24	146.77	106.18
41	174°45'51"	106.30	89.06	40.77	100	174°46'23"	84.80	60.71	40.52	100.50	174°46'41"	223.24	146.77	106.18

LOTS

LOT NO	ACRES	BEARING	DIST
1	1.00	S 89° 45' 51" W	106.30
2	1.00	S 89° 45' 51" W	106.30
3	1.00	S 89° 45' 51" W	106.30
4	1.00	S 89° 45' 51" W	106.30
5	1.00	S 89° 45' 51" W	106.30
6	1.00	S 89° 45' 51" W	106.30
7	1.00	S 89° 45' 51" W	106.30
8	1.00	S 89° 45' 51" W	106.30
9	1.00	S 89° 45' 51" W	106.30
10	1.00	S 89° 45' 51" W	106.30
11	1.00	S 89° 45' 51" W	106.30
12	1.00	S 89° 45' 51" W	106.30
13	1.00	S 89° 45' 51" W	106.30
14	1.00	S 89° 45' 51" W	106.30
15	1.00	S 89° 45' 51" W	106.30
16	1.00	S 89° 45' 51" W	106.30
17	1.00	S 89° 45' 51" W	106.30
18	1.00	S 89° 45' 51" W	106.30
19	1.00	S 89° 45' 51" W	106.30
20	1.00	S 89° 45' 51" W	106.30

STATE OF VIRGINIA, COUNTY OF JAMES CITY

In the Clerk's Office of the Circuit Court of the County of James City this 23rd day of January 1978. The map shown hereon was presented and admitted to this record as the law directs.

Waste: James E. Langley, Clerk

Plot Book: 34, Page 78

Anheuser-Busch, Incorporated

Future Neighborhood & Recreation Center

Now or Formerly Colonial Williamsburg

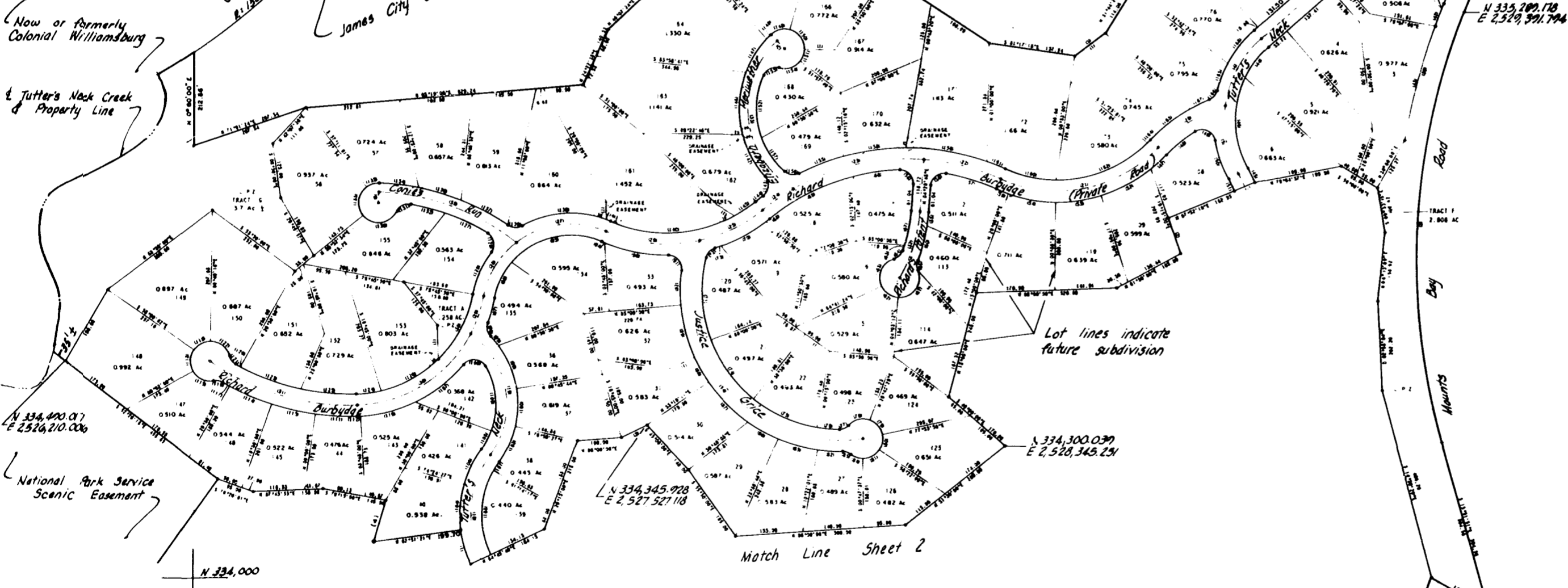
Jutter's Neck Creek & Property Line

C.G.C.R. 2100

James City County Government Center

Future Single Residential Area

Anheuser-Busch, Incorporated



I certify that this plat was made by me at the direction of the owner, and that the land is entirely within the boundaries of land covered by deeds duly of record in the Clerk's Office of the Circuit Court of James City County, Virginia in the following Deed and Plat books; D.B. 125 P. 101; P.B. 27 P. 31, 32, 33, 34, 35 & 36.

COMMONWEALTH OF VIRGINIA

Civil Engineer

By James E. Langley 8/22/77

GEORGE E. LANGLEY

Land Surveyor

742

CERTIFIED PROFESSIONAL ENGINEER

KINGSMILL on the JAMES

PLAT OF PROPERTY TO BE CONVEYED FROM

ANHEUSER-BUSCH, INCORPORATED

TO

BUSCH PROPERTIES, INC.

JAMES CITY COUNTY, VIRGINIA

LANGLEY, McDONALD & OVERMAN

CONSULTING ENGINEERS

VA. BEACH, VA.

AUG. 16, 1977

REVISED NOV. 18, 1977

Recorded 23rd day of Jan 1978

in

D. B. No. 181 pages 432

James E. Langley Clerk

Total Acreage = 135.24 Acres.

Exclusive of L.P.Z. Tract G

