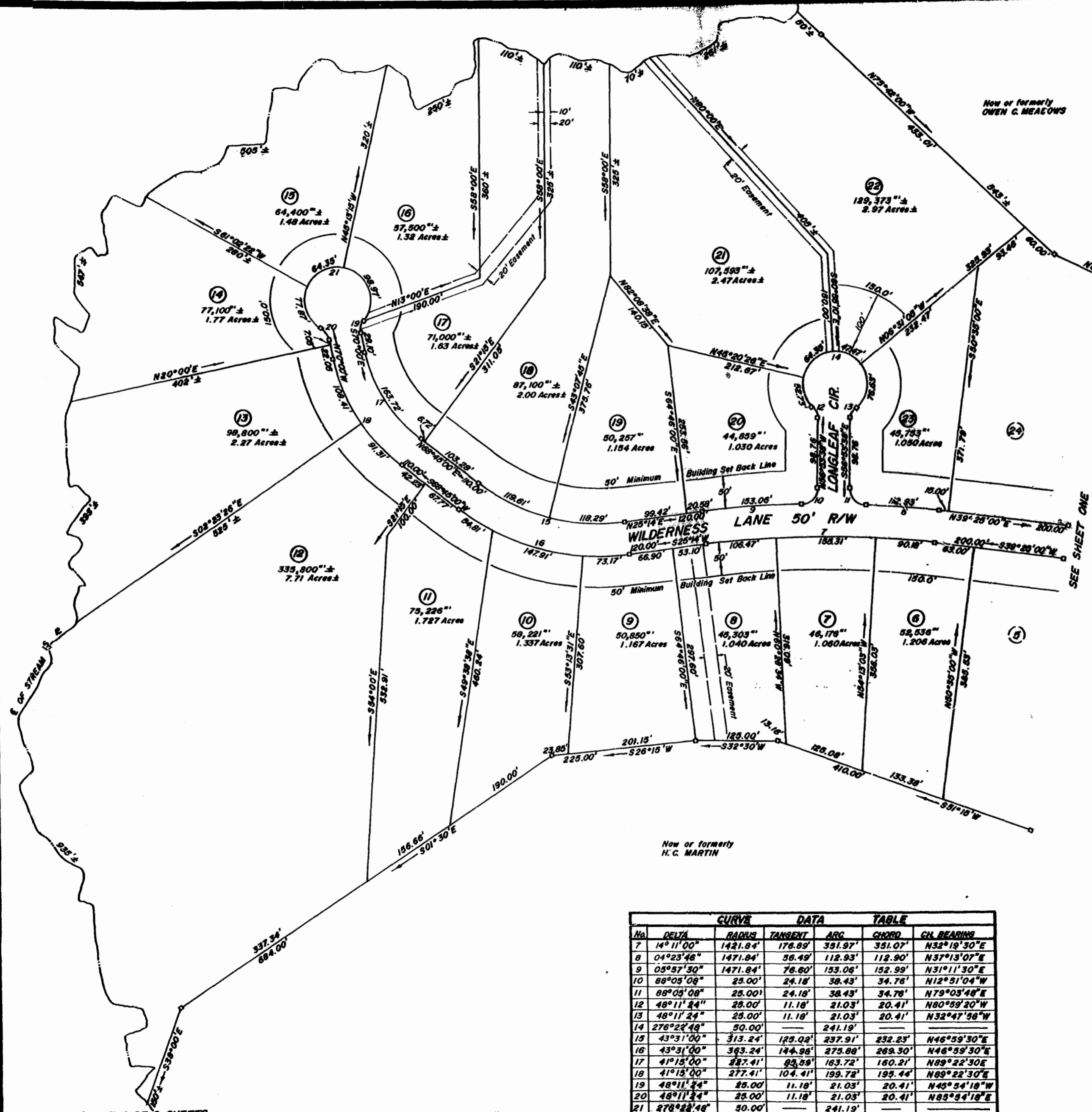


PINERIDGE

JAMES CITY COUNTY VIRGINIA

COENEN & ASSOCIATES, INC.
 ENGINEERS — PLANNERS — SURVEYORS
 696 J. CLYDE MORRIS BLVD. — NEWPORT NEWS, VA.
 SCALE: 1" = 100' DATE: OCTOBER 10, 1977



CURVE DATA TABLE						
No.	DELTA	RADIUS	TANGENT	ARC	CHORD	CH. BEARING
7	14° 11' 00"	1421.84'	176.89'	351.97'	351.07'	N32° 19' 30" E
8	04° 23' 48"	1471.84'	56.49'	112.93'	112.90'	N37° 13' 07" E
9	05° 57' 30"	1471.84'	76.60'	153.06'	152.99'	N31° 11' 30" E
10	88° 05' 08"	25.00'	24.18'	38.43'	34.76'	N12° 51' 04" W
11	88° 05' 08"	25.00'	24.18'	38.43'	34.76'	N79° 03' 48" E
12	48° 11' 24"	25.00'	11.18'	21.03'	20.41'	N80° 59' 20" W
13	48° 11' 24"	25.00'	11.18'	21.03'	20.41'	N32° 47' 58" W
14	276° 24' 48"	50.00'	—	241.19'	—	—
15	43° 31' 00"	313.24'	125.02'	237.91'	232.23'	N46° 59' 30" E
16	43° 31' 00"	313.24'	144.95'	275.88'	269.30'	N46° 59' 30" E
17	41° 15' 00"	277.41'	93.55'	183.72'	160.21'	N89° 22' 30" E
18	41° 15' 00"	277.41'	104.41'	199.78'	199.44'	N89° 22' 30" E
19	48° 11' 24"	25.00'	11.18'	21.03'	20.41'	N45° 54' 18" W
20	48° 11' 24"	25.00'	11.18'	21.03'	20.41'	N85° 54' 18" E
21	276° 24' 48"	50.00'	—	241.19'	—	—

Recorded 15th day of Nov 1977
 P & No 3 in
 J. C. Coenen