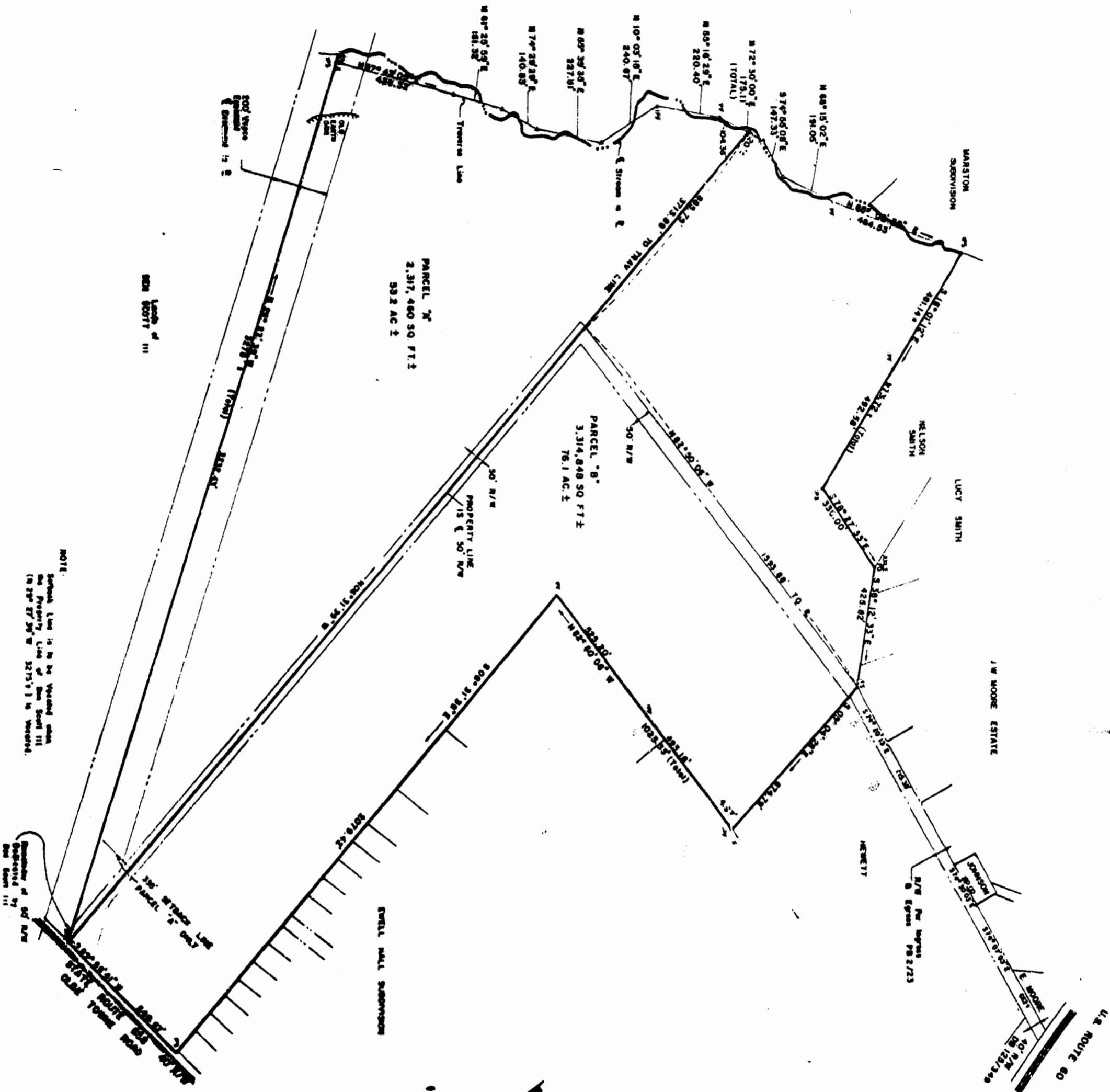


CONTINENTAL CAN COMPANY
(MAIN HILL TRACT)



NOTE:
Boundary Line is to be Vented when
the Property Line of Ben Scott III
is 27° 27' 30" W 3275.1' is Vented.

ASSURANCES:
1. 201
2. 202
3. 203
4. 204
5. 205
6. 206
7. 207
8. 208
9. 209
10. 210

This subdivision is approved by the
authorities in accordance with
existing subdivision regulations and
may be amended to revert.
Signed: *Benjamin S. Scott Jr.*
Date: *Aug 11, 1977*

Recorded 24th day of Aug, 1977
in
D. B. No. 178, pages 292
Dorinda C. Clarke Clerk

architects & engineers, inc.
architects, engineers, surveyors, and planners
williamsburg, virginia

A SURVEY OF 129.3± ACRES, STANDING
IN THE NAME OF BENJAMIN S. SCOTT JR.
LYING IN JAMES CITY COUNTY, VIRGINIA

revisions	
date	

