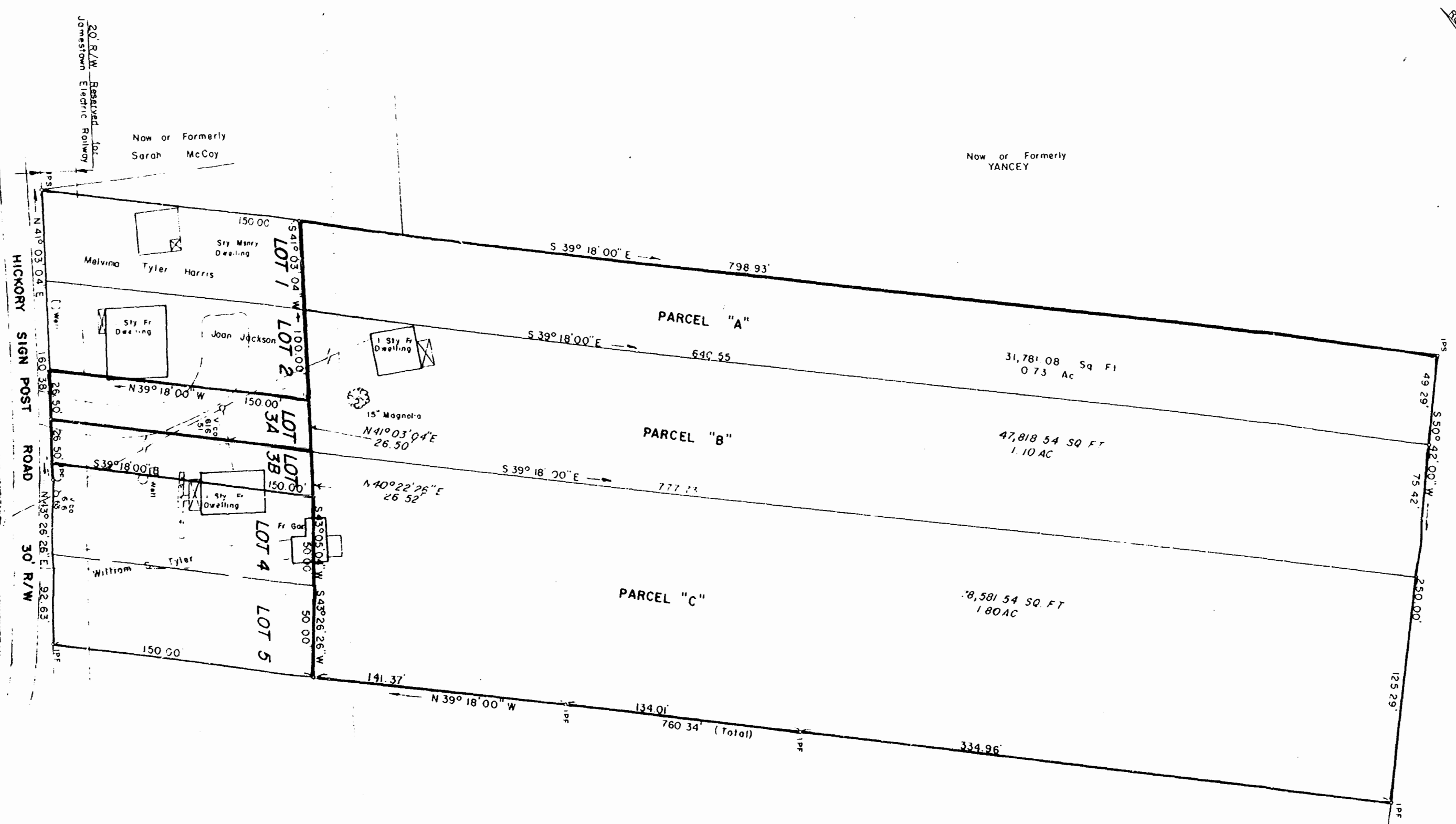


RECORD MERIDIAN

PLAT FILED IN P.E. NO. 34 PAGE 46



A CONDITION OF THIS APPROVAL IS:

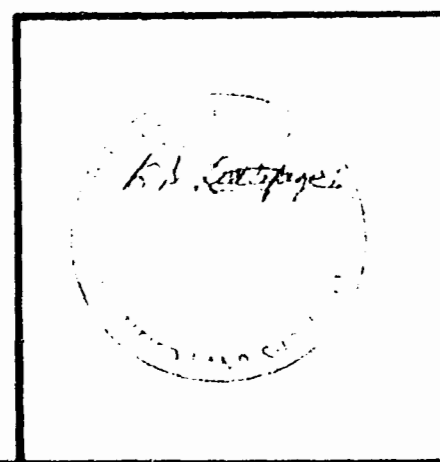
LOT 1 AND PARCEL "A" WILL NOT BE SOLD SEPARATELY
 LOTS 2 & 3A AND PARCEL "B" WILL NOT BE SOLD SEPARATELY
 LOTS 3B, 4, 5 AND PARCEL "C" WILL NOT BE SOLD SEPARATELY
 WITHOUT FURTHER APPROVAL BY THE AGENT

This subdivision is approved by the undersigned in accordance with existing subdivision regulations and may be committed to record.

Signed *Henry H. Epp*
 5/23/77

- REF DB 21/567
- DB 30/427
- DB 36A/346
- DB 39/507
- DB 41/400
- DB 77/339
- DB 165/758
- PB 2/36
- PB 15/15

Recorded 26th day of May 1977
 in
 D. B. No. 176, pages 108, 114, & 120
 Juliette C. Clothier, Clerk
 by *Betty Wallace*, Dep. Clerk



WOODSON, LITTLEPAGE & DeYOUNG, INC.
 ENGINEERS, SURVEYORS & PLANNERS
 P. O. DRAWER FU WILLIAMSBURG, VIRGINIA 23185

A SURVEY OF THREE PARCELS OF THE
 WILLIAM TYLER ESTATE
 LYING IN BERKELEY DISTRICT, JAMES CITY COUNTY, VIRGINIA

SCALE: 1" = 50'
 DATE: JULY 9, 1976
 DWG. 2476 REV. 5/16/77

