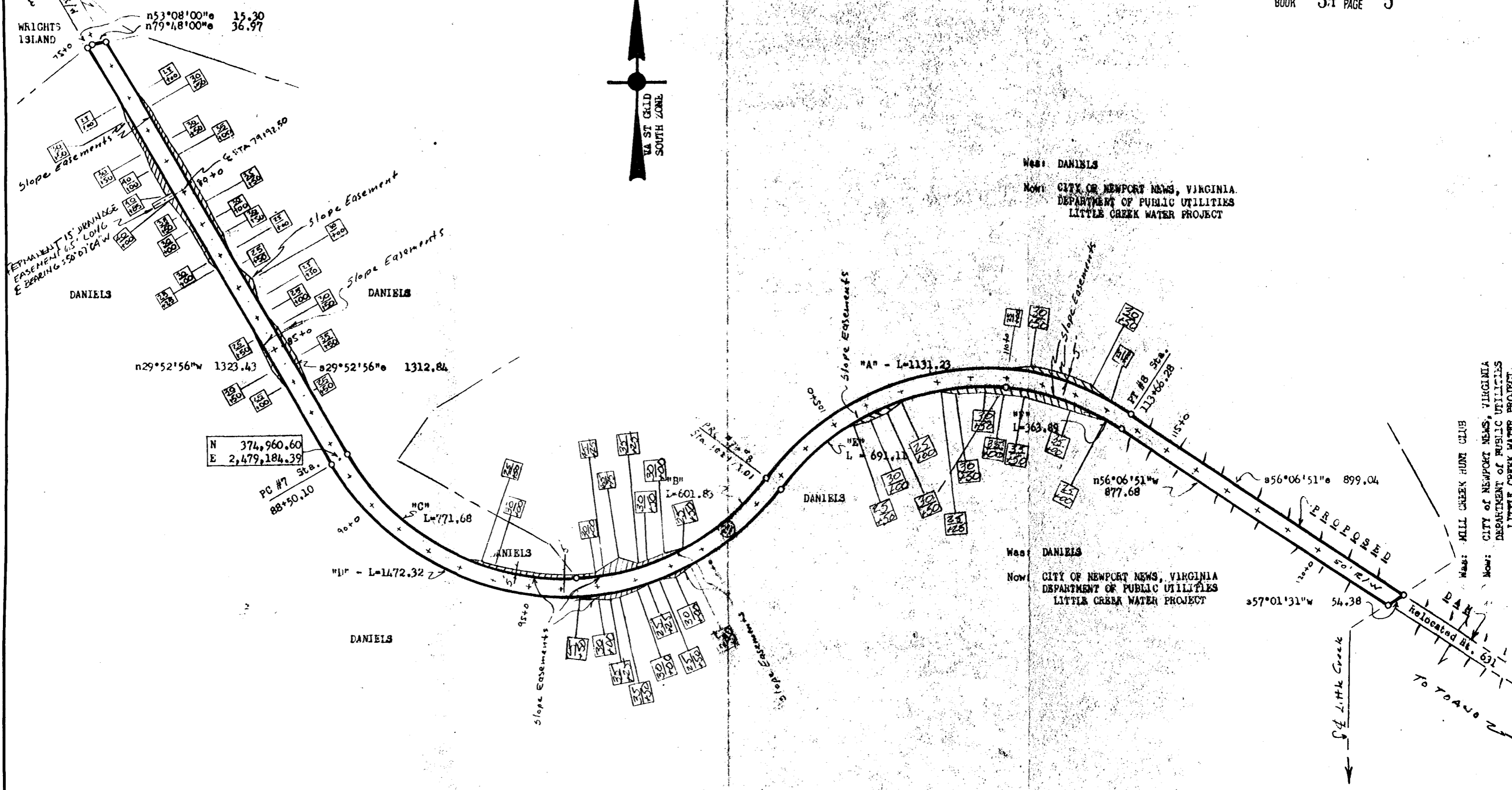
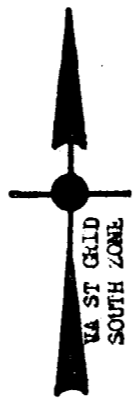


CITY OF NEWPORT NEWS, VIRGINIA
DEPARTMENT OF PUBLIC UTILITIES
LITTLE CREEK WATER PROJECT



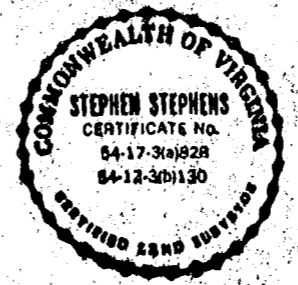
N 374,960.60
E 2,479,184.39

CURVE DATA

#	R	L	I	T	C	CB
"A"	745.00	1131.23	87°00'00"	706.97	1025.64	s80°23'10"W
"B"	695.00	601.83	49°36'52"	321.24	583.20	s61°41'30"W
"C"	695.00	771.68	63°37'03"	431.06	732.65	s61°41'30"E
"D"	745.00	1472.32	113°13'55"	1130.54	1244.15	n86°29'50"W
"E"	695.00	691.41	57°00'00"	377.35	663.25	s65°23'10"W
"F"	695.00	363.89	30°00'00"	186.22	359.75	n71°06'50"W

NOTES: Iron markers at all corners.
Bearings are clockwise.
Ref.: D.B. #69, p. 5A4.
P.B. # 4, p. 6,
JCC Tax Map 13/7.
Slope Easement = $\frac{20}{100} = 1.20$ Acres
Drainage

AREA: 5.424 Acres.
Revised: 10-1-75 by 15



Stephen Stephens



8:50 AM.
Recorded 18th day of August, 1976
in
D. B. No. 170, pages 360
Clerk

PLAN of:
That Part of:
PROPERTY of:
CITY OF NEWPORT NEWS, VIRGINIA
DEPARTMENT OF PUBLIC UTILITIES
LITTLE CREEK WATER PROJECT
to be CONVEYED to:
COMMONWEALTH OF VIRGINIA
DEPARTMENT OF HIGHWAYS
POWhatan DISTRICT, JAMES CITY COUNTY, VIRGINIA
Scale: 1" = 200'
Date: April, 1973
Dwg. # _____ Parcel # 27