

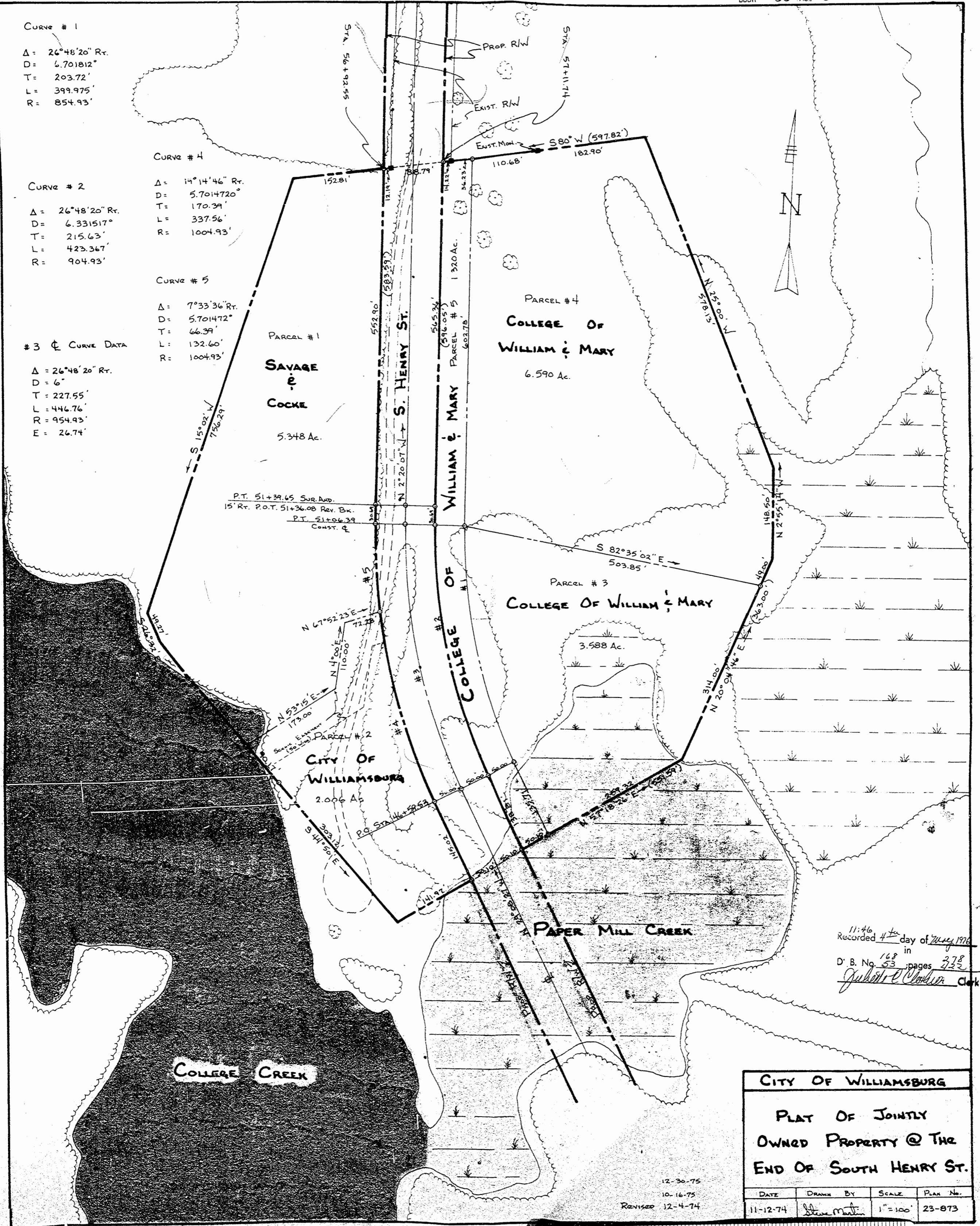
CURVE # 1
 $\Delta = 26^{\circ}48'20''$ Rt.
 $D = 6.701812'$
 $T = 203.72'$
 $L = 399.975'$
 $R = 854.93'$

CURVE # 2
 $\Delta = 26^{\circ}48'20''$ Rt.
 $D = 6.331517'$
 $T = 215.63'$
 $L = 423.367'$
 $R = 904.93'$

CURVE # 4
 $\Delta = 14^{\circ}14'46''$ Rt.
 $D = 5.7014720'$
 $T = 170.39'$
 $L = 337.56'$
 $R = 1004.93'$

CURVE # 5
 $\Delta = 7^{\circ}33'36''$ Rt.
 $D = 5.7014720'$
 $T = 66.39'$
 $L = 132.60'$
 $R = 1004.93'$

3 ϕ CURVE DATA
 $\Delta = 26^{\circ}48'20''$ Rt.
 $D = 6''$
 $T = 227.55'$
 $L = 446.76'$
 $R = 954.93'$
 $E = 26.74'$



11:46 4th day of May 1976
 Recorded in
 D. B. No. 53 pages 278
Judith C. Clowser Clerk

CITY OF WILLIAMSBURG			
PLAT OF JOINTLY OWNED PROPERTY @ THE END OF SOUTH HENRY ST.			
DATE	DRAWN BY	SCALE	PLAN No.
11-12-74	Steve Martin	1"=100'	23-873

12-30-75
 10-16-75
 Revised 12-4-74

