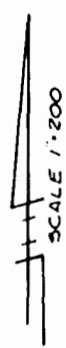


pk UP

100 100 100

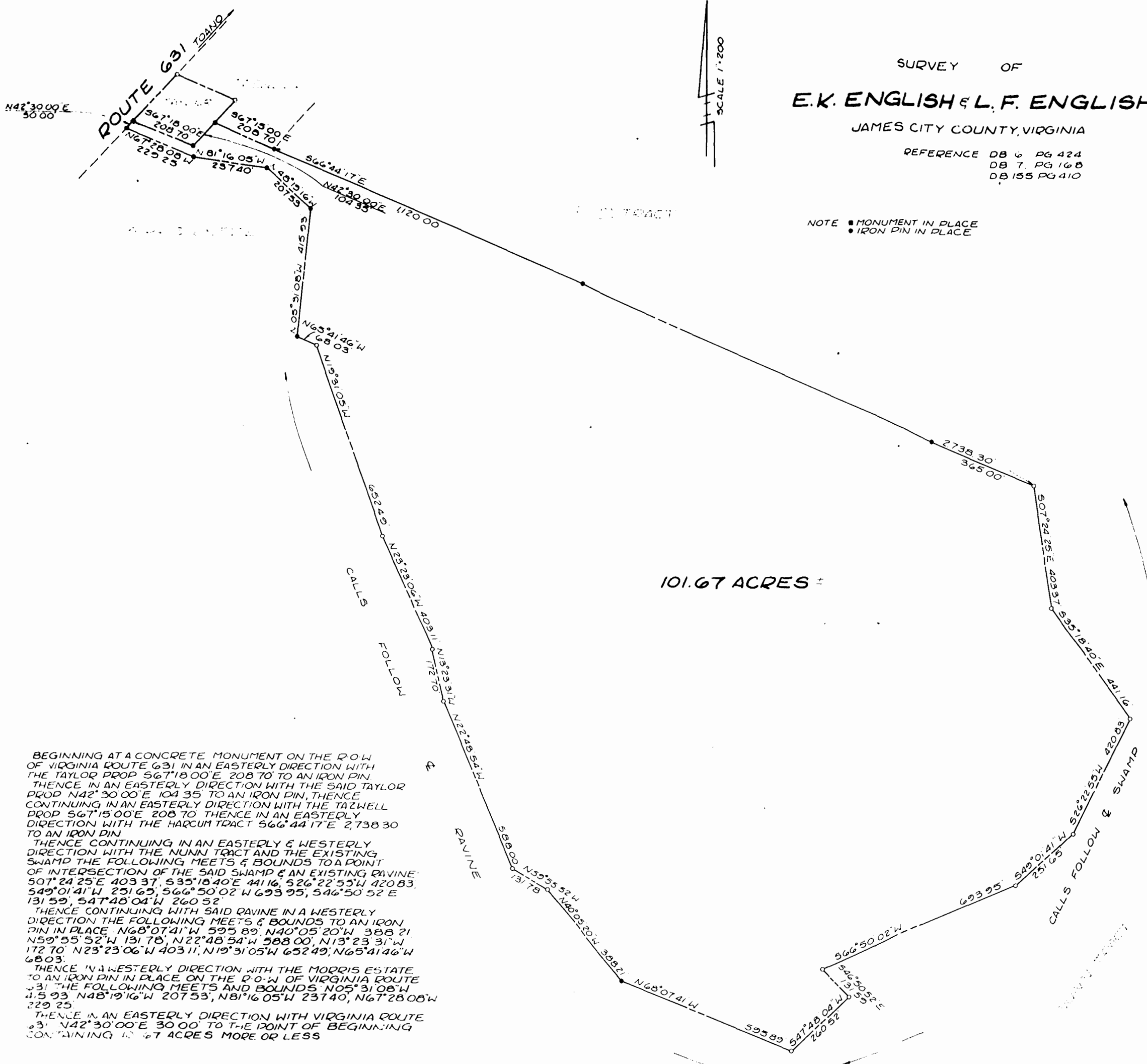


# SURVEY OF E.K. ENGLISH & L.F. ENGLISH

JAMES CITY COUNTY, VIRGINIA

REFERENCE DB 6 PG 424  
DB 7 PG 168  
DB 155 PG 410

NOTE ■ MONUMENT IN PLACE  
● IRON PIN IN PLACE



101.67 ACRES ±

BEGINNING AT A CONCRETE MONUMENT ON THE P.O.W OF VIRGINIA ROUTE 631 IN AN EASTERLY DIRECTION WITH THE TAYLOR PROP 567°18'00"E 208 70' TO AN IRON PIN. THENCE IN AN EASTERLY DIRECTION WITH THE SAID TAYLOR PROP N42°30'00"E 104 35' TO AN IRON PIN, THENCE CONTINUING IN AN EASTERLY DIRECTION WITH THE TAZWELL PROP 567°15'00"E 208 70' THENCE IN AN EASTERLY DIRECTION WITH THE HARCUM TRACT 566°44'17"E 2,738 30' TO AN IRON PIN. THENCE CONTINUING IN AN EASTERLY & WESTERLY DIRECTION WITH THE NUNN TRACT AND THE EXISTING SWAMP THE FOLLOWING MEETS & BOUNDS TO A POINT OF INTERSECTION OF THE SAID SWAMP & AN EXISTING RAVINE: 507°24'25"E 403 37', 535°18'40"E 441 16', 526°22'55"W 420 83', 549°01'41"W 251 65', 566°50'02"W 693 95', 546°50'52"E 131 59', 547°48'04"W 260 52'. THENCE CONTINUING WITH SAID RAVINE IN A WESTERLY DIRECTION THE FOLLOWING MEETS & BOUNDS TO AN IRON PIN IN PLACE: N68°07'41"W 595 89', N40°05'20"W 388 21', N59°55'52"W 131 78', N22°48'54"W 588 00', N13°23'31"W 172 70', N23°23'06"W 403 11', N19°31'05"W 652 49', N65°41'46"W 680 3'. THENCE IN A WESTERLY DIRECTION WITH THE MORRIS ESTATE TO AN IRON PIN IN PLACE ON THE P.O.W OF VIRGINIA ROUTE 631 THE FOLLOWING MEETS AND BOUNDS N05°31'08"W 45 93', N48°19'16"W 207 53', N81°16'05"W 237 40', N67°28'08"W 229 25'. THENCE IN AN EASTERLY DIRECTION WITH VIRGINIA ROUTE 631 N42°30'00"E 30 00' TO THE POINT OF BEGINNING CONTAINING 101.67 ACRES MORE OR LESS

SURVEYED  
6-1-75  
*Clyde H. Perry*  
CLYDE H. PERRY  
CERTIFIED LAND SURVEYOR



Recorded 14 day of July 1975  
D.B. No. 116 pages 2  
*John C. ... Clerk*  
*Ray ...*